


# Frocks & Frolics Out & About Handbag

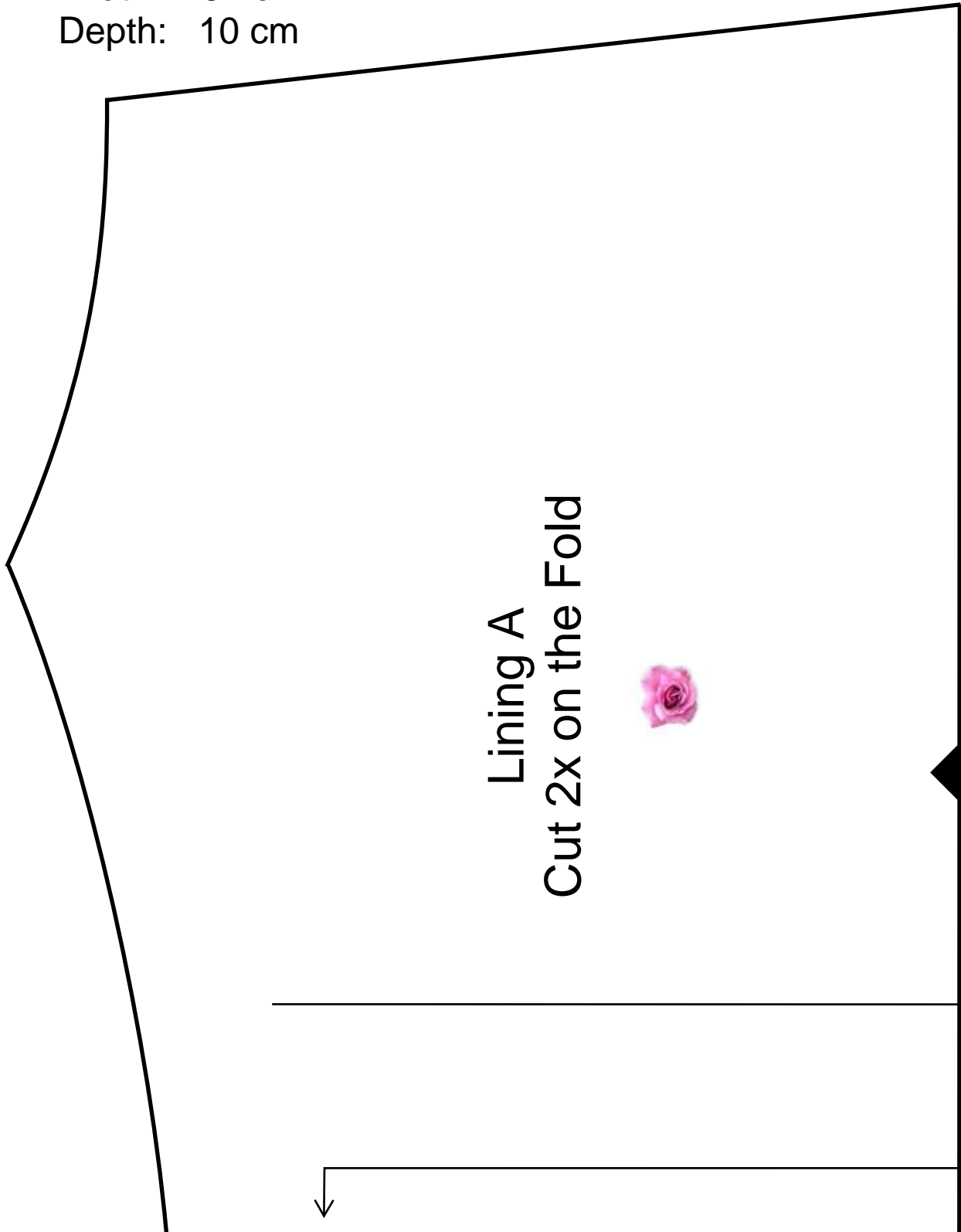
  
Test scale, it should be exactly  
5cm long.

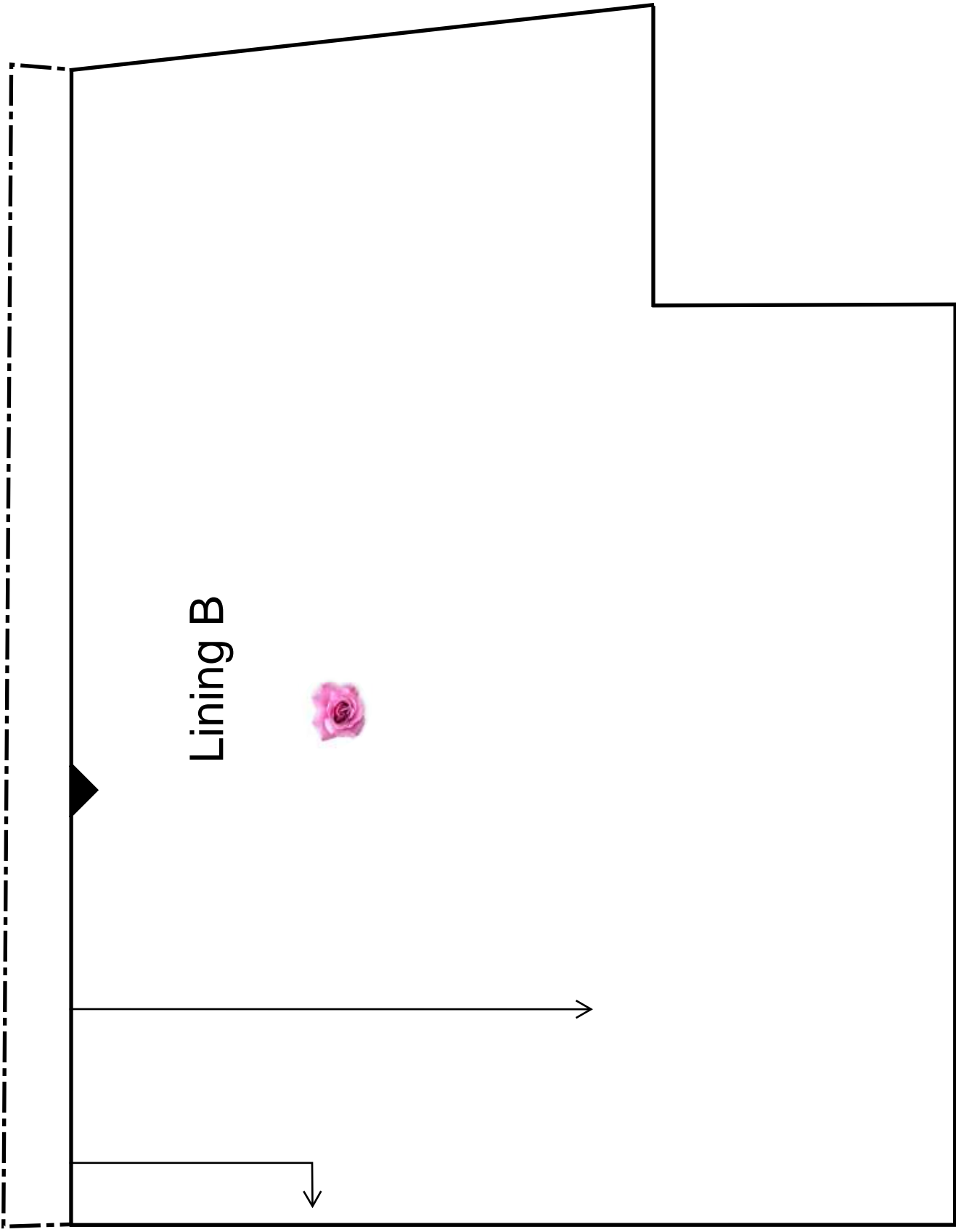
Finished Dimensions:

Height : 26 cm

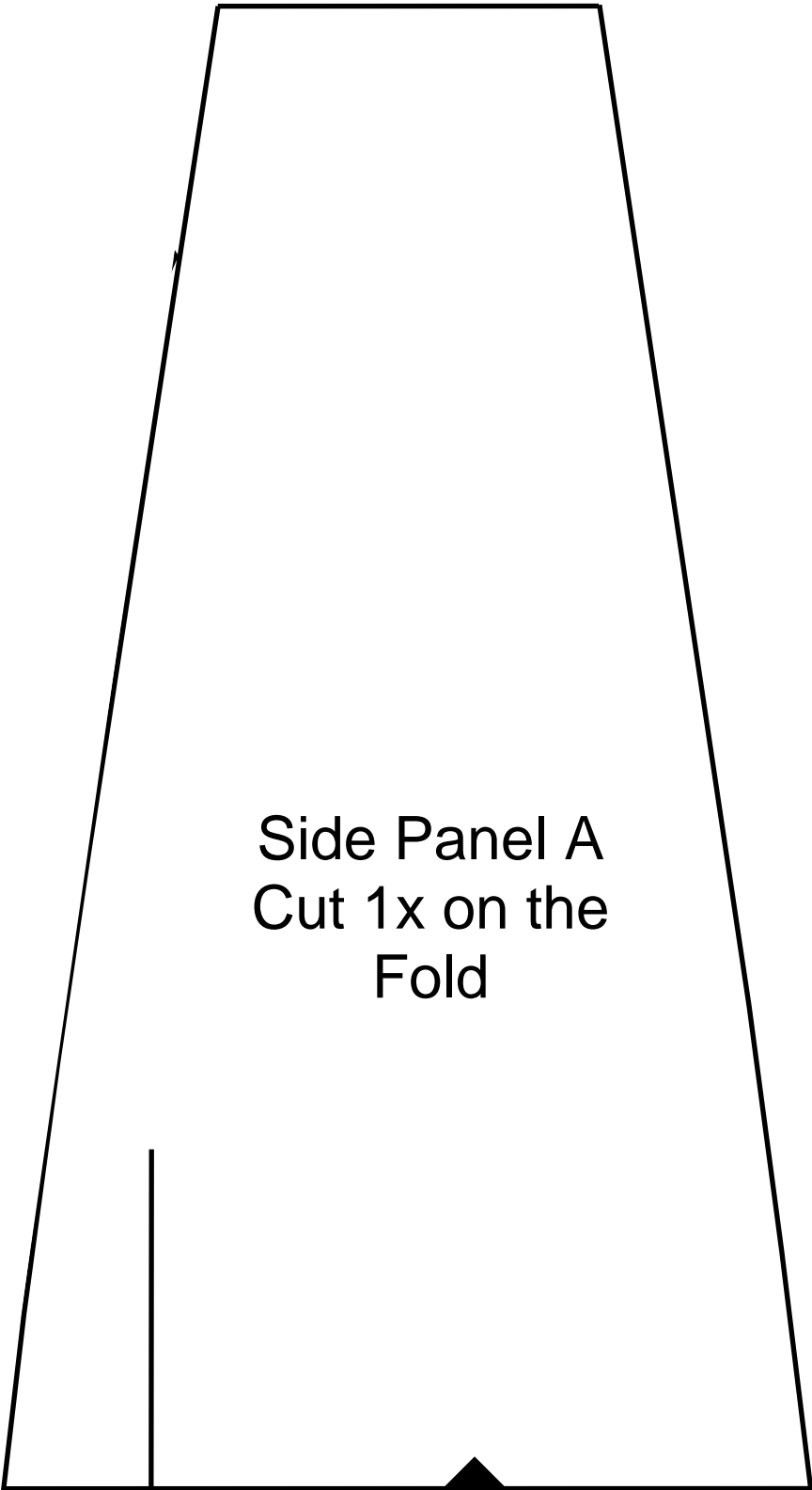
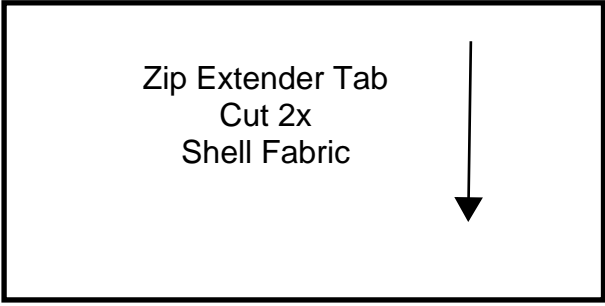
Width: 37 cm

Depth: 10 cm

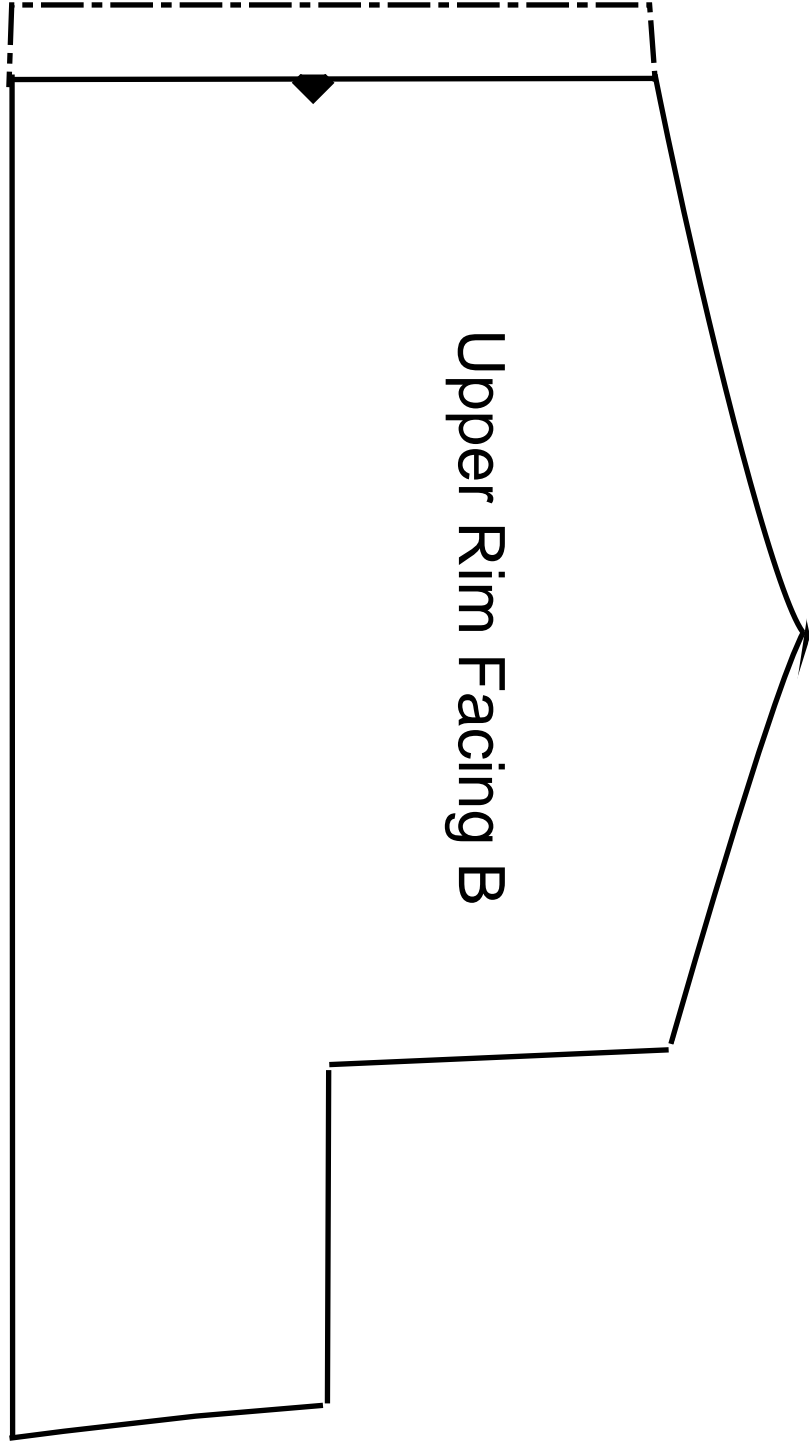


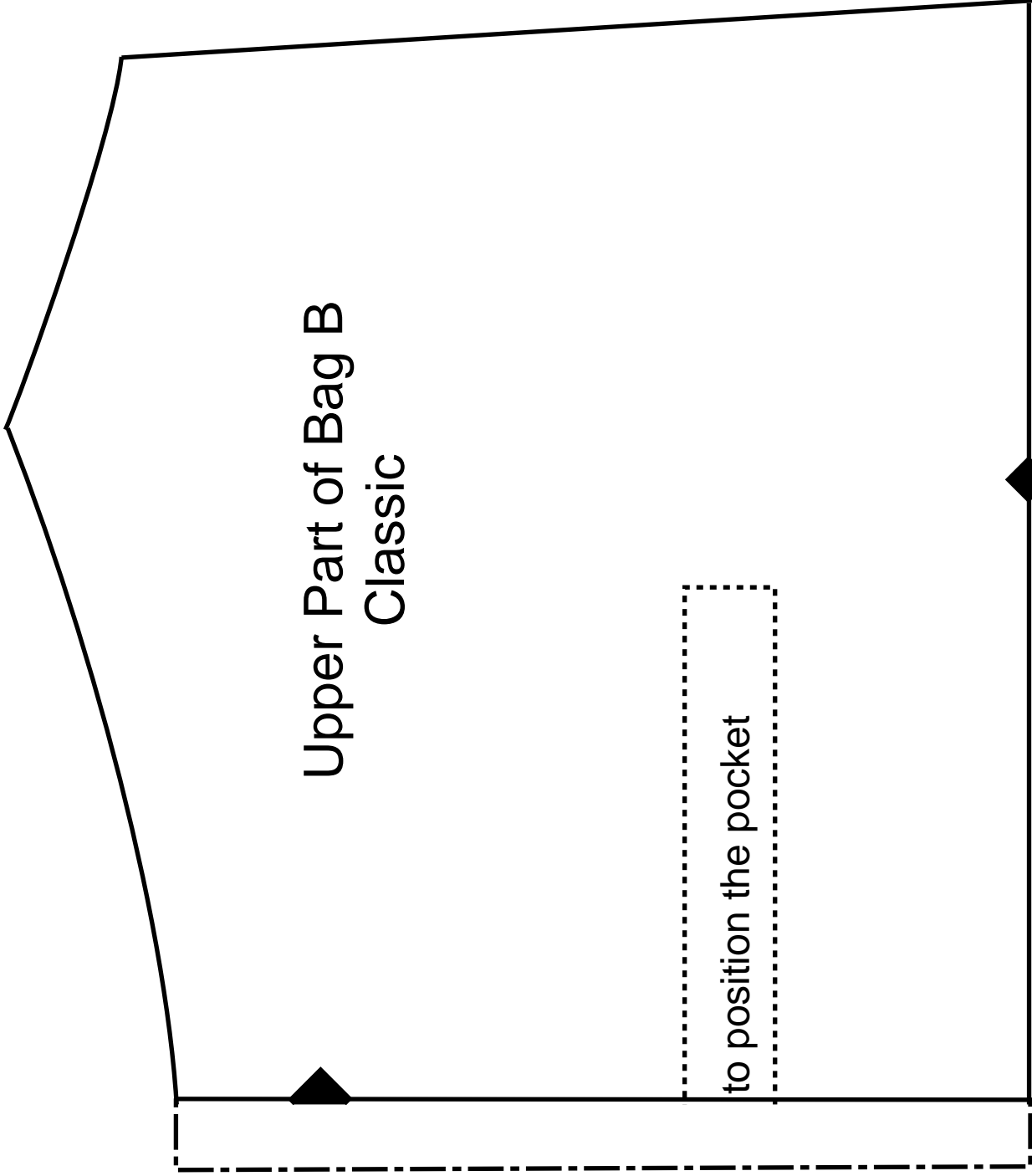


Lining B



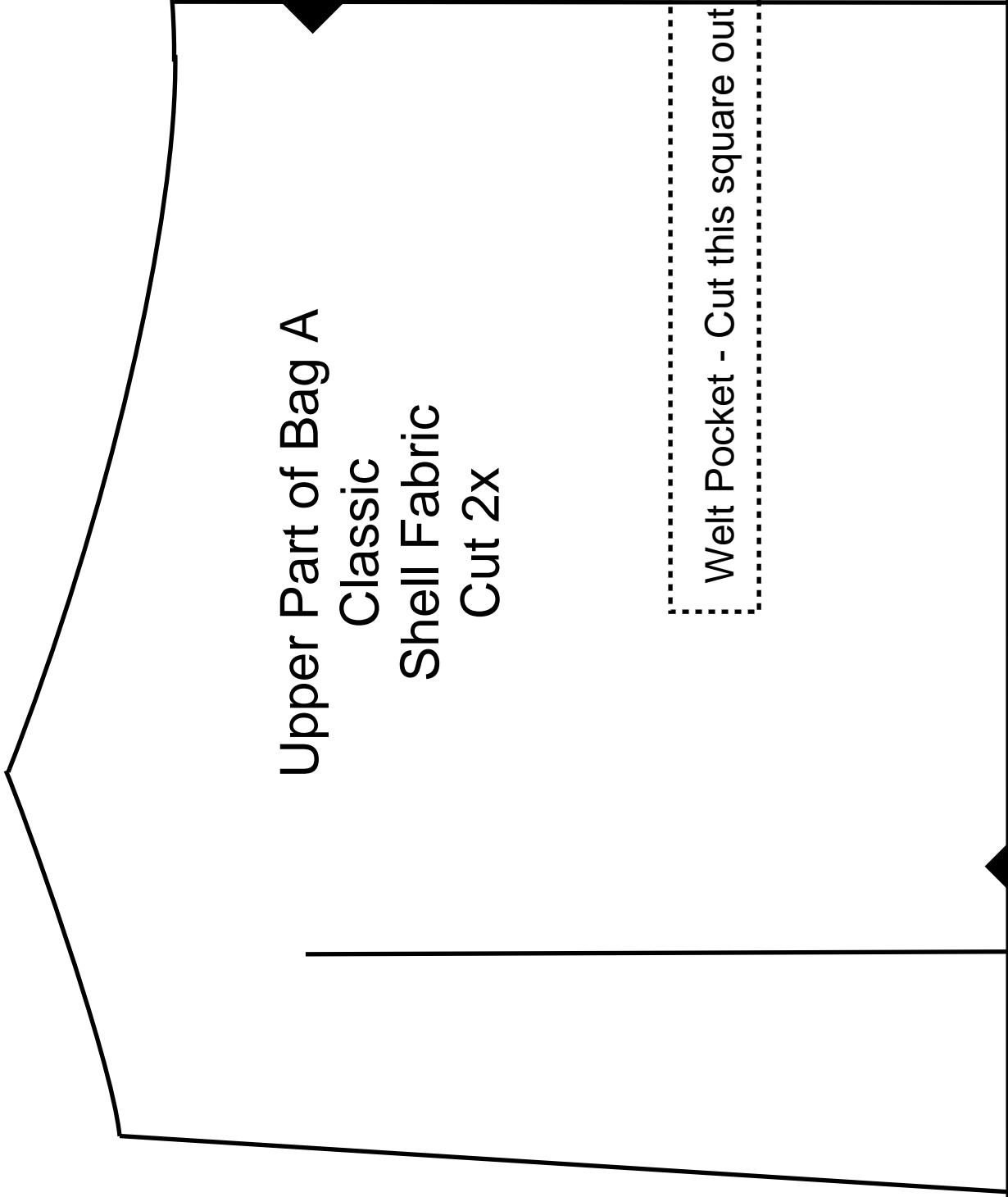
Upper Rim Facing B





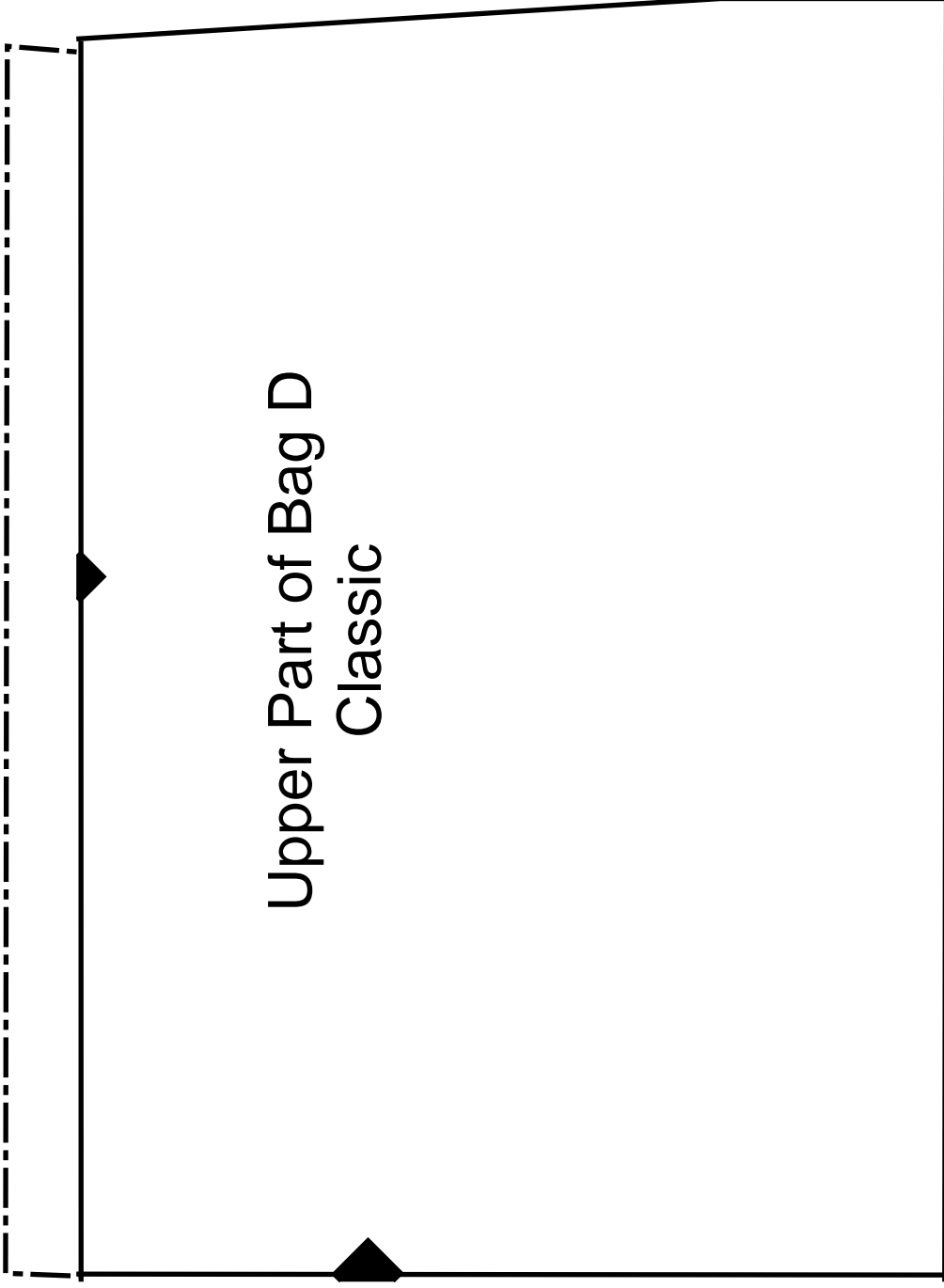
Upper Part of Bag B  
Classic

to position the pocket

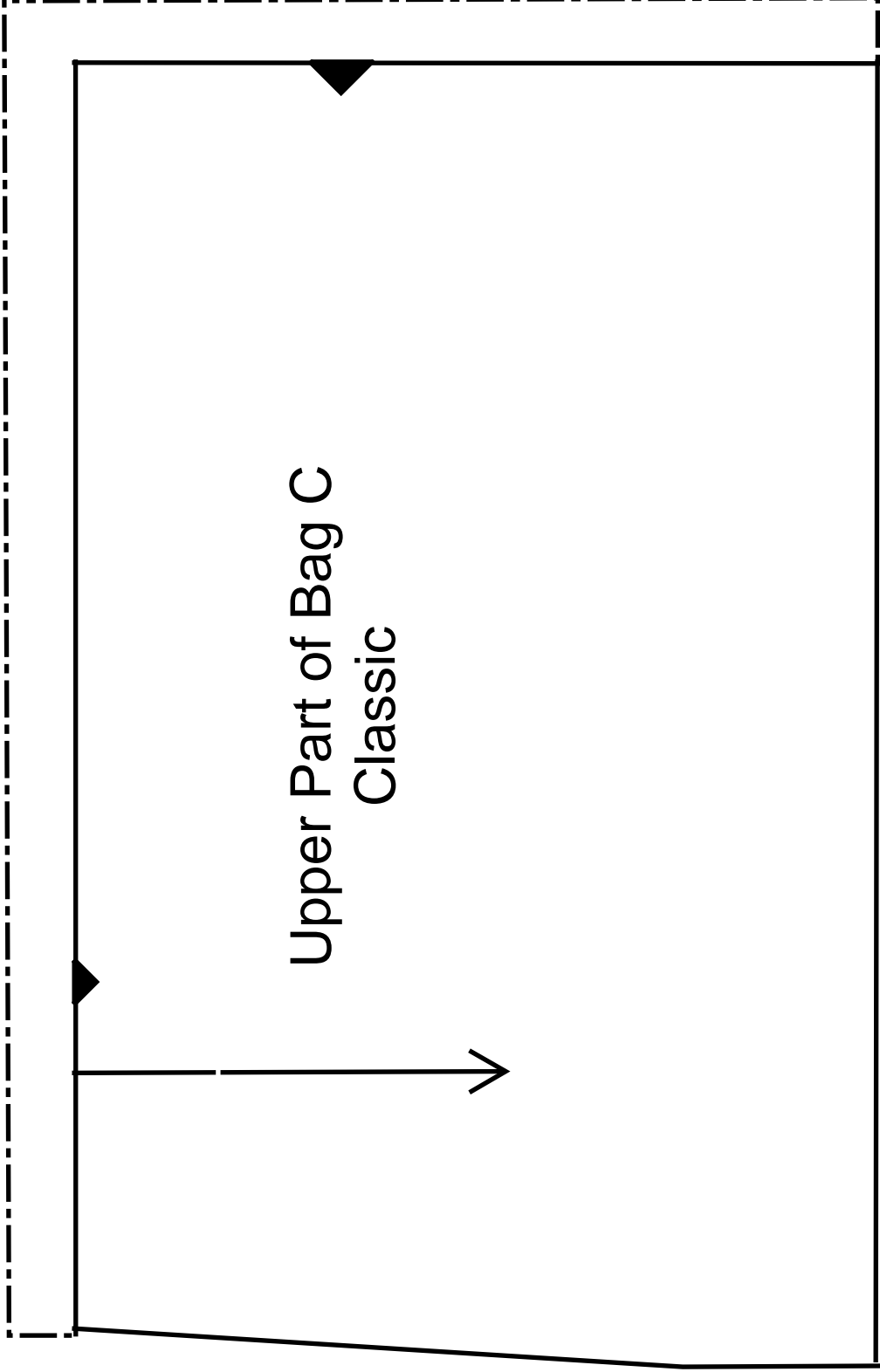


Upper Part of Bag A  
Classic  
Shell Fabric  
Cut 2x

Welt Pocket - Cut this square out

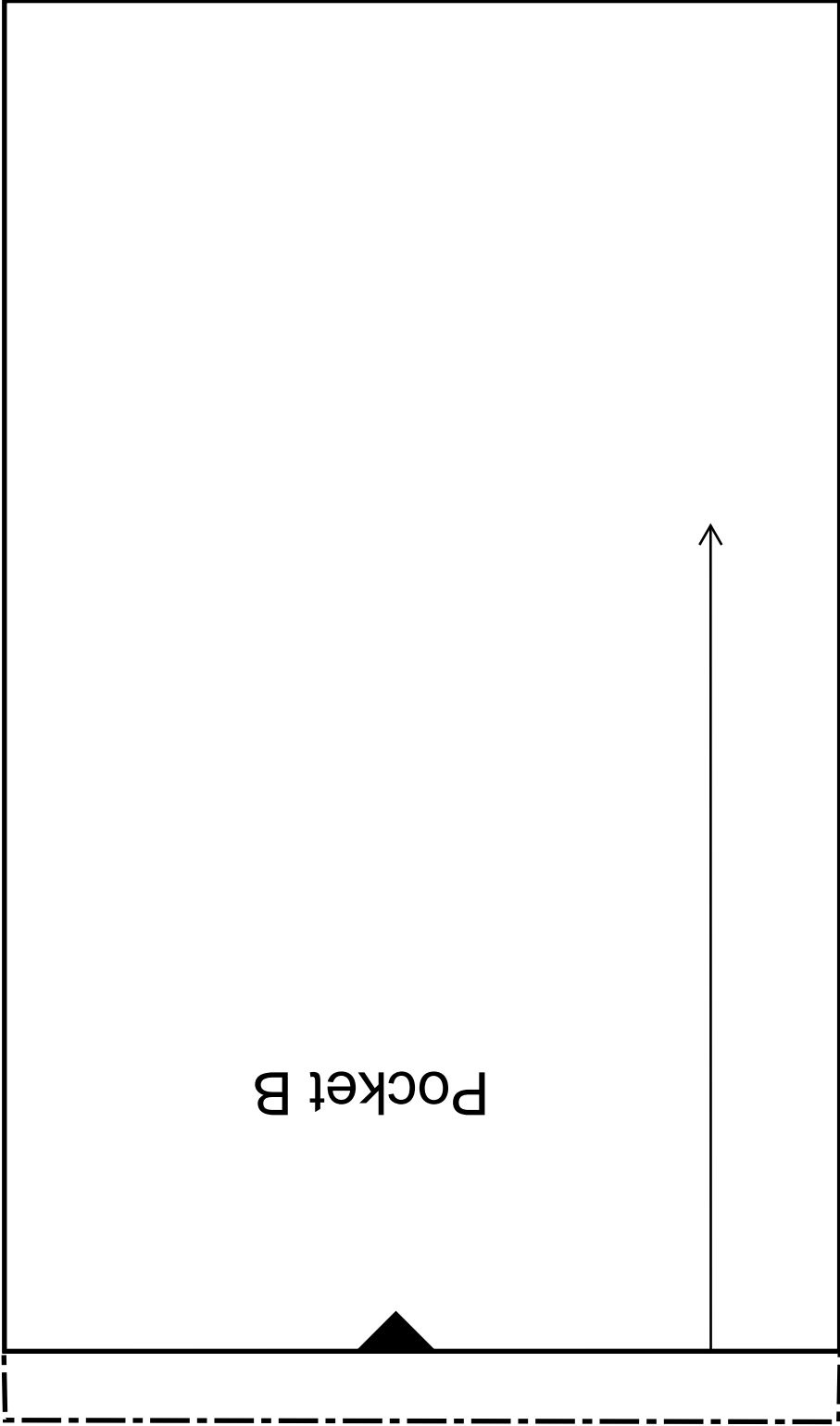


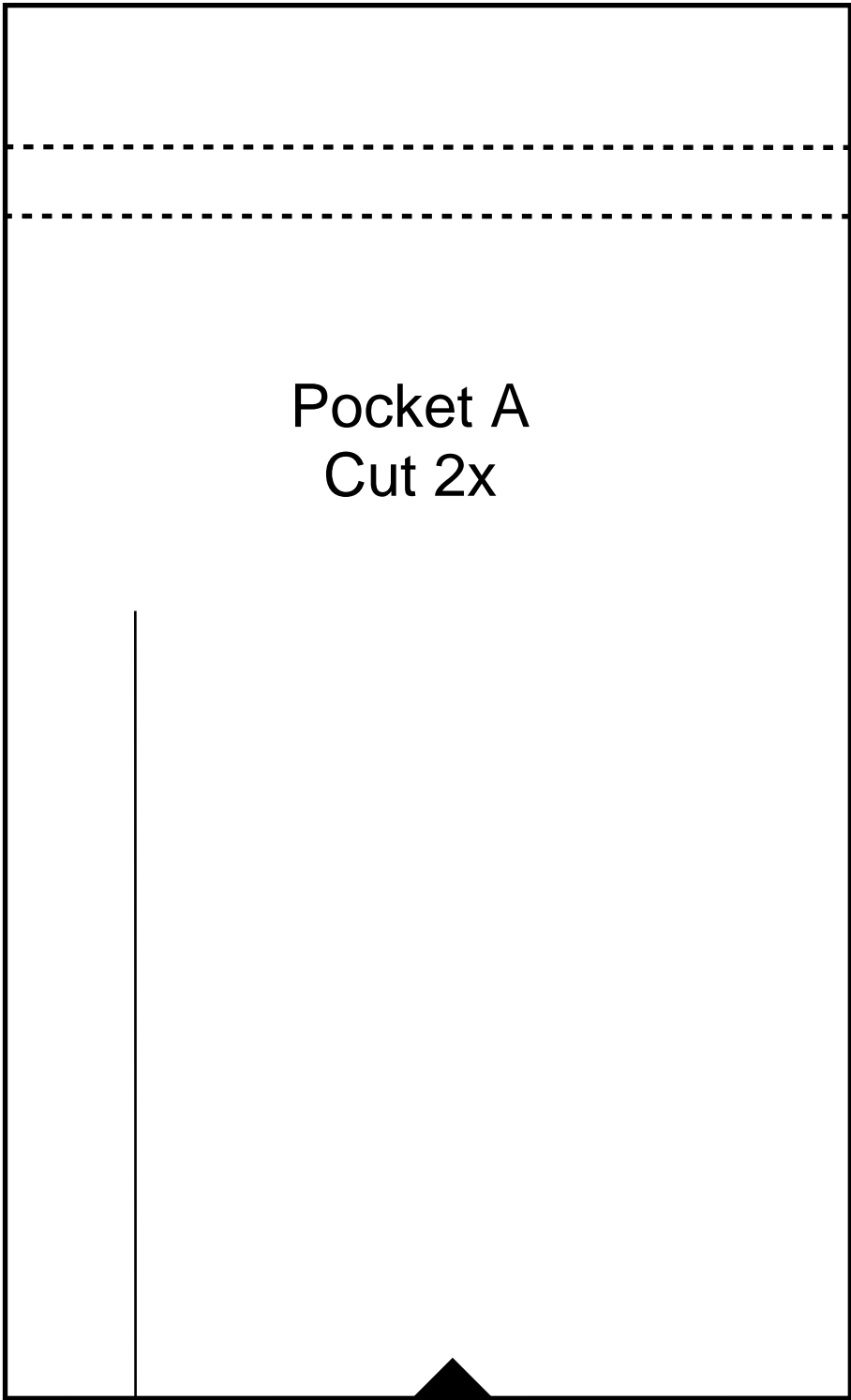
Upper Part of Bag D  
Classic

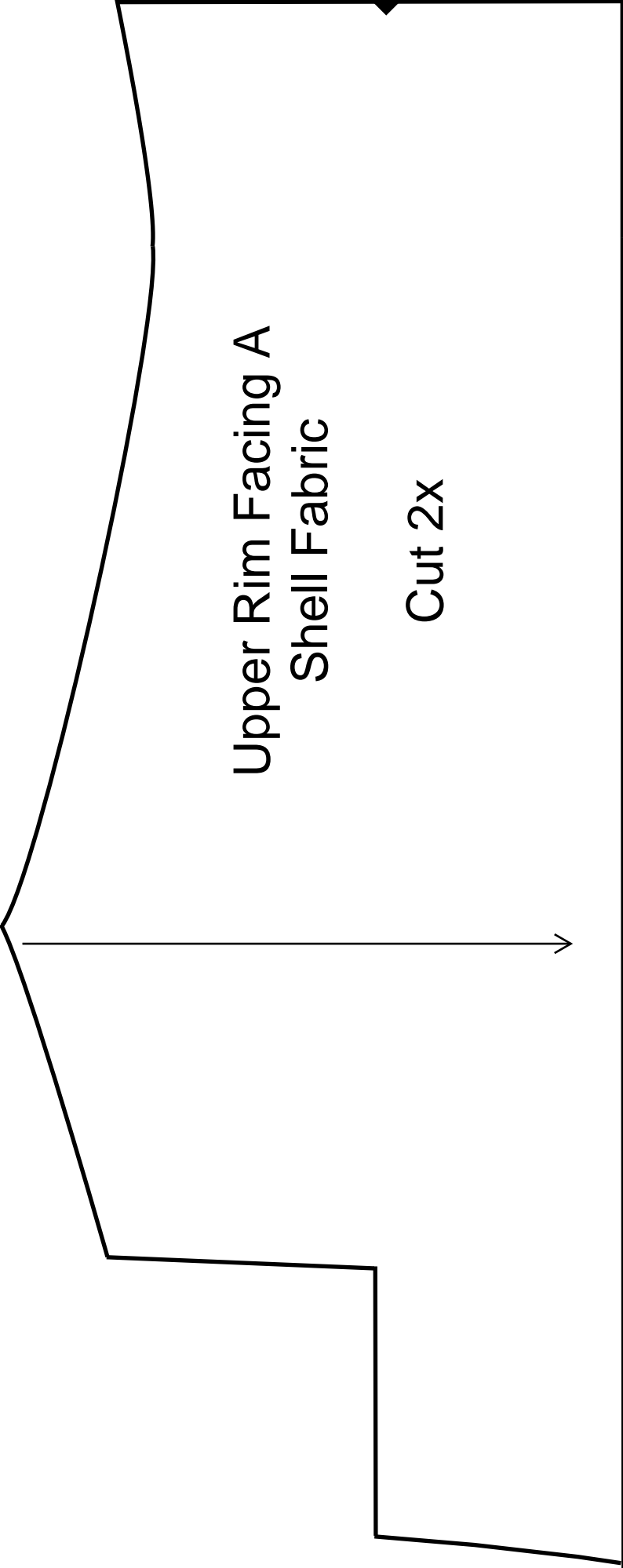


Upper Part of Bag C  
Classic







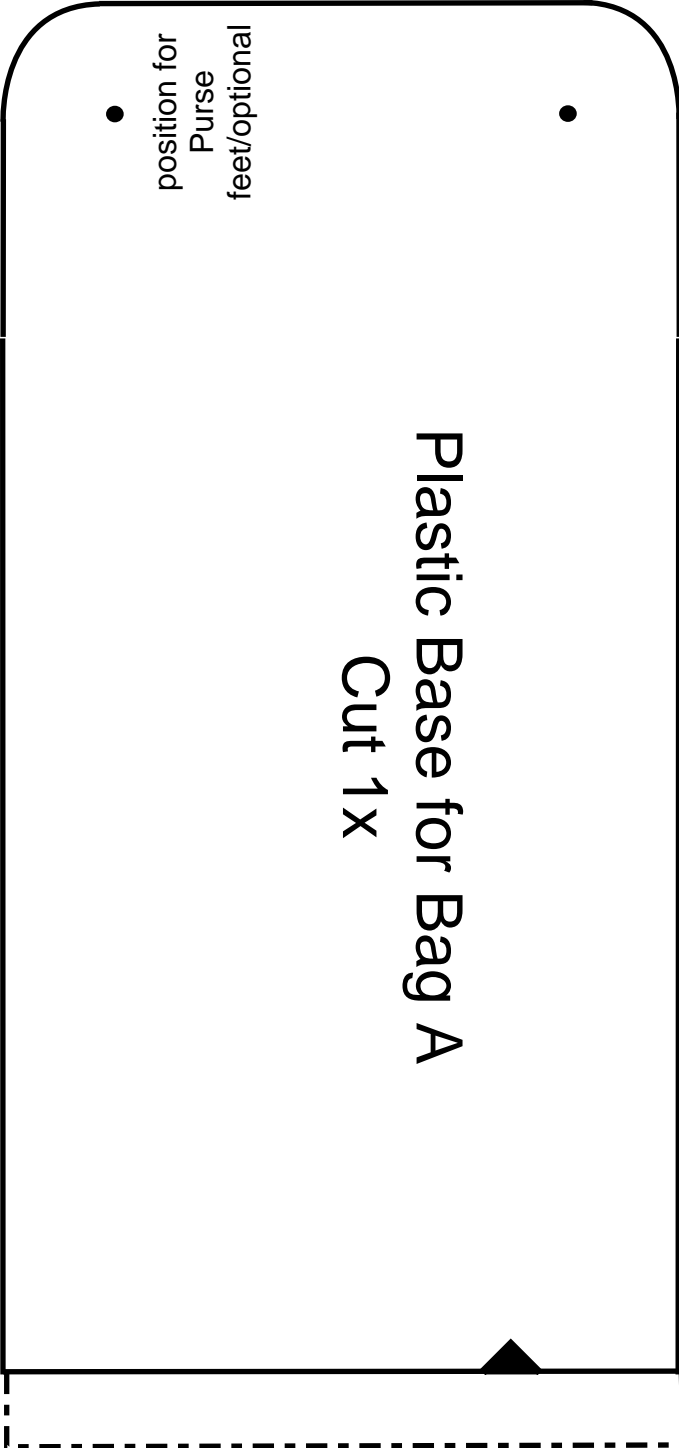


Upper Rim Facing A  
Shell Fabric

Cut 2x

Plastic Base for Bag A  
Cut 1X

• position for  
Purse  
feet/optional





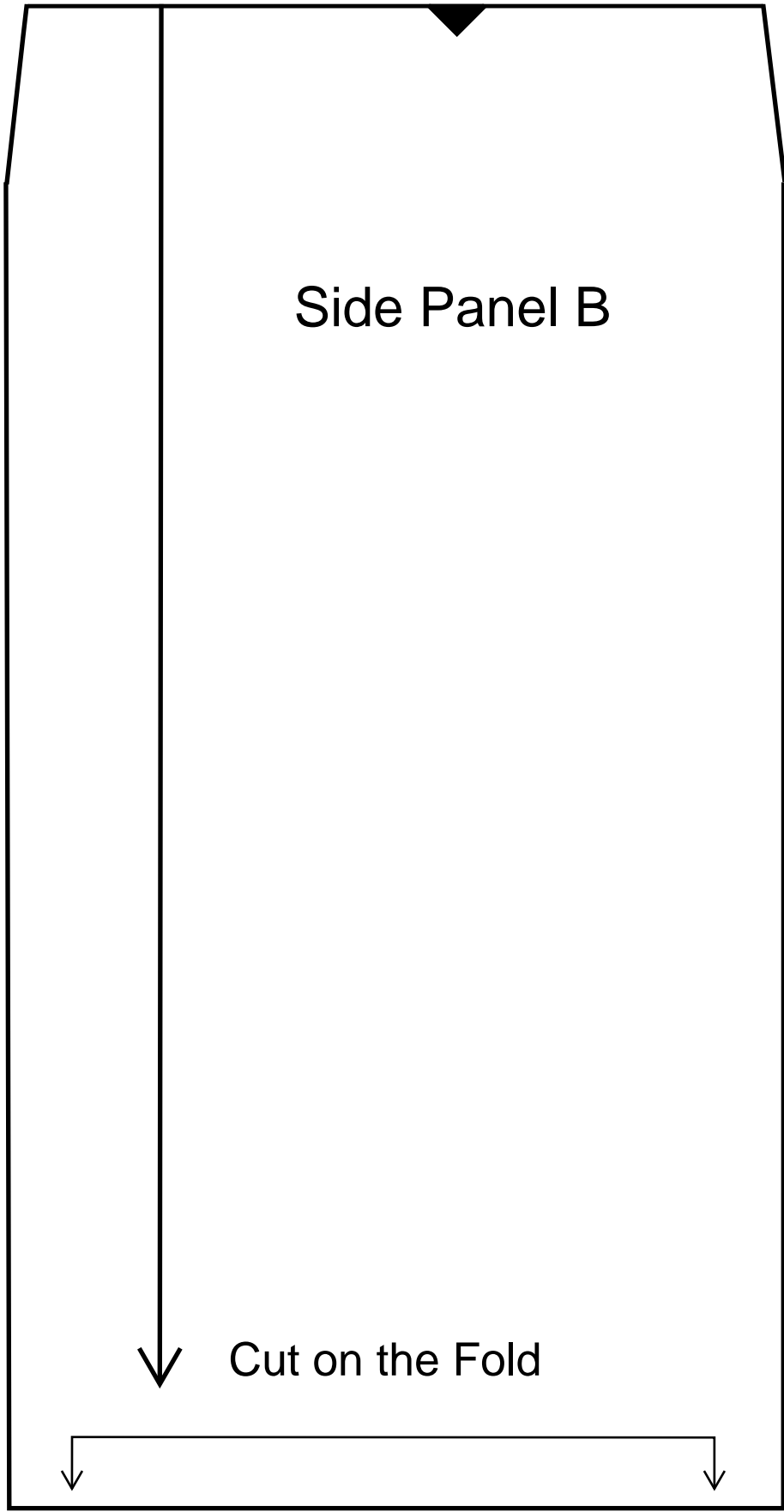
Base Cover  
Cut 1x in Lining



# Plastic Base for Bag B

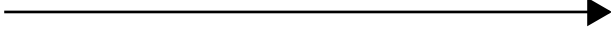
• position for  
Purse  
feet/optional





Optional

Welt Pocket  
Welt (lips)  
Cut 1x in Shell Fabric



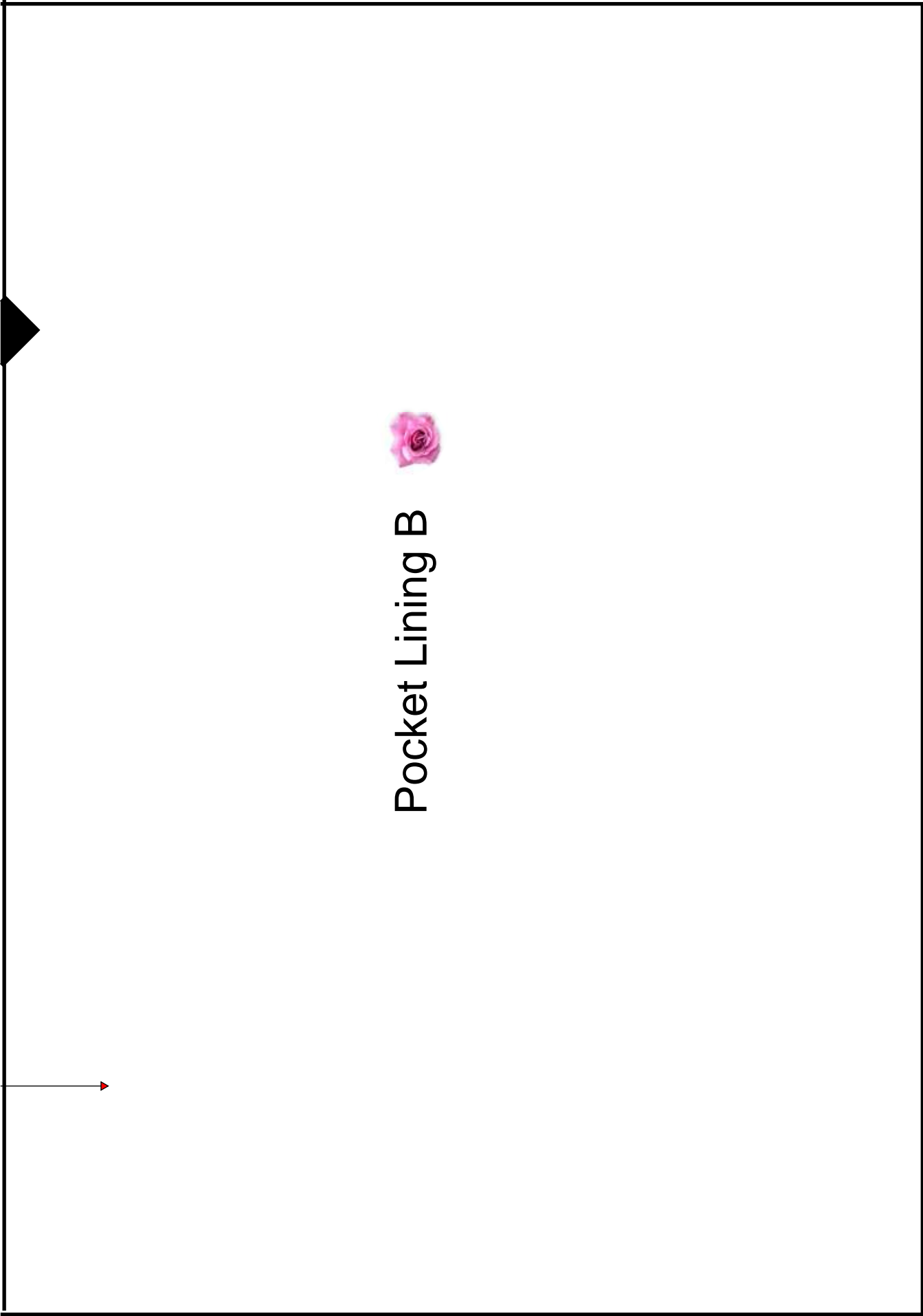


Optional Welt Pocket



Pocket Lining A  
Cut 1x on  
in Lining





Pocket Lining B

To make the Classic Bag print pages 1-11. The additional pages are different front shapes with different width feature strips.

Page 1-11: Classic version with Welt pocket



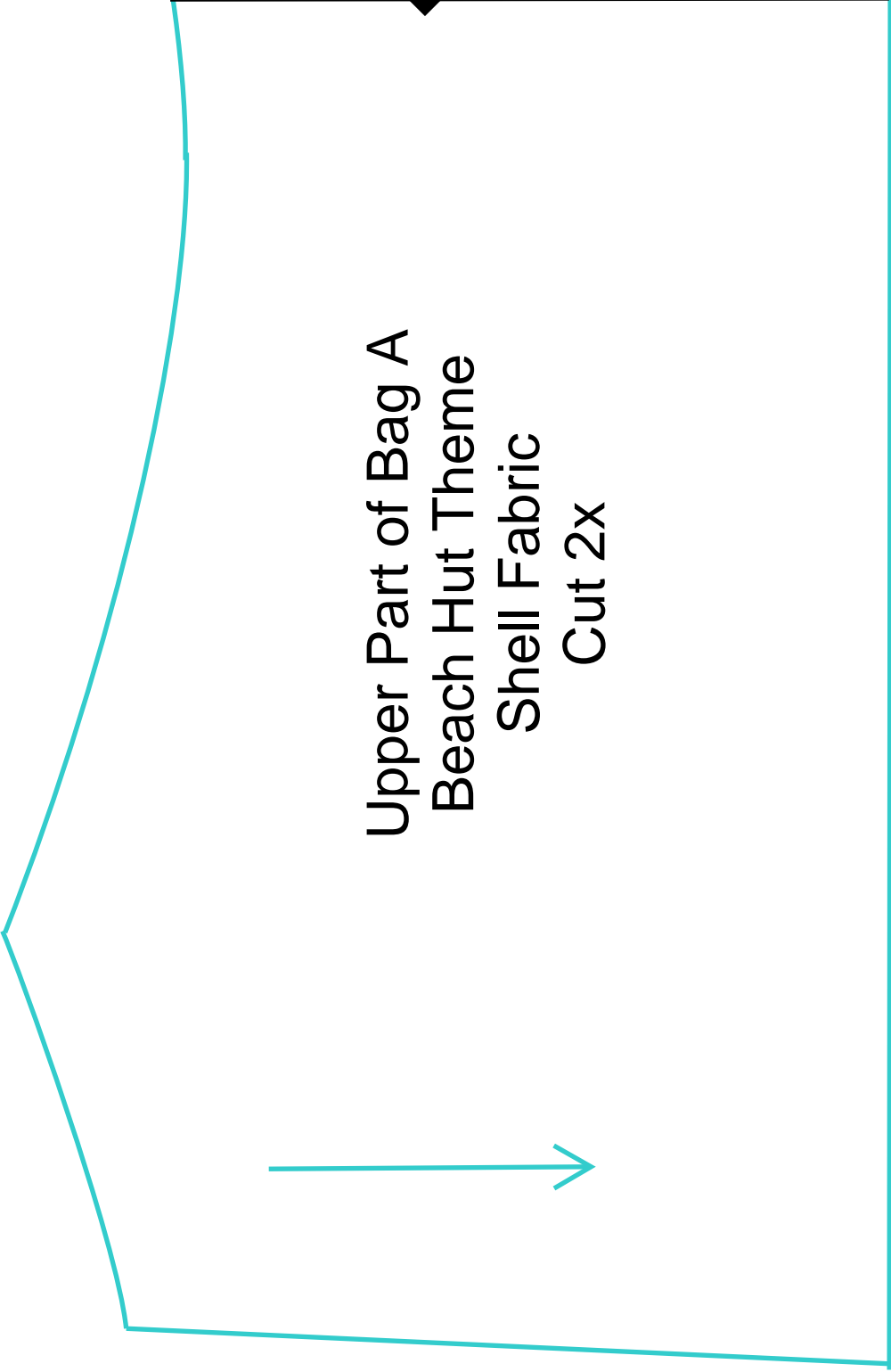
Page 12,13,14 &15 :  
Beach Hut theme

with wider Handles



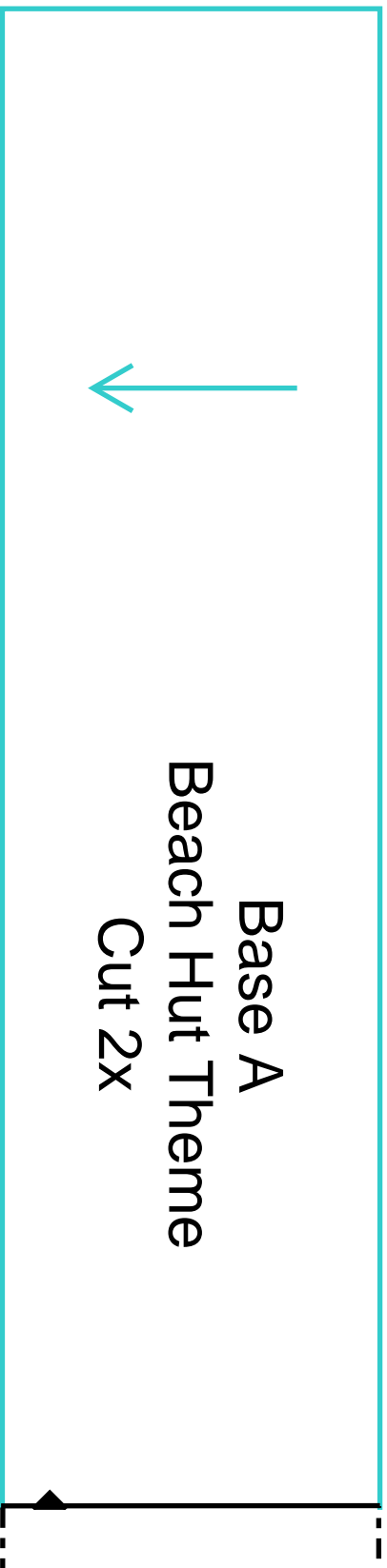
Page 16,17,18&19 :  
Camper Van Theme with  
slimmer handles



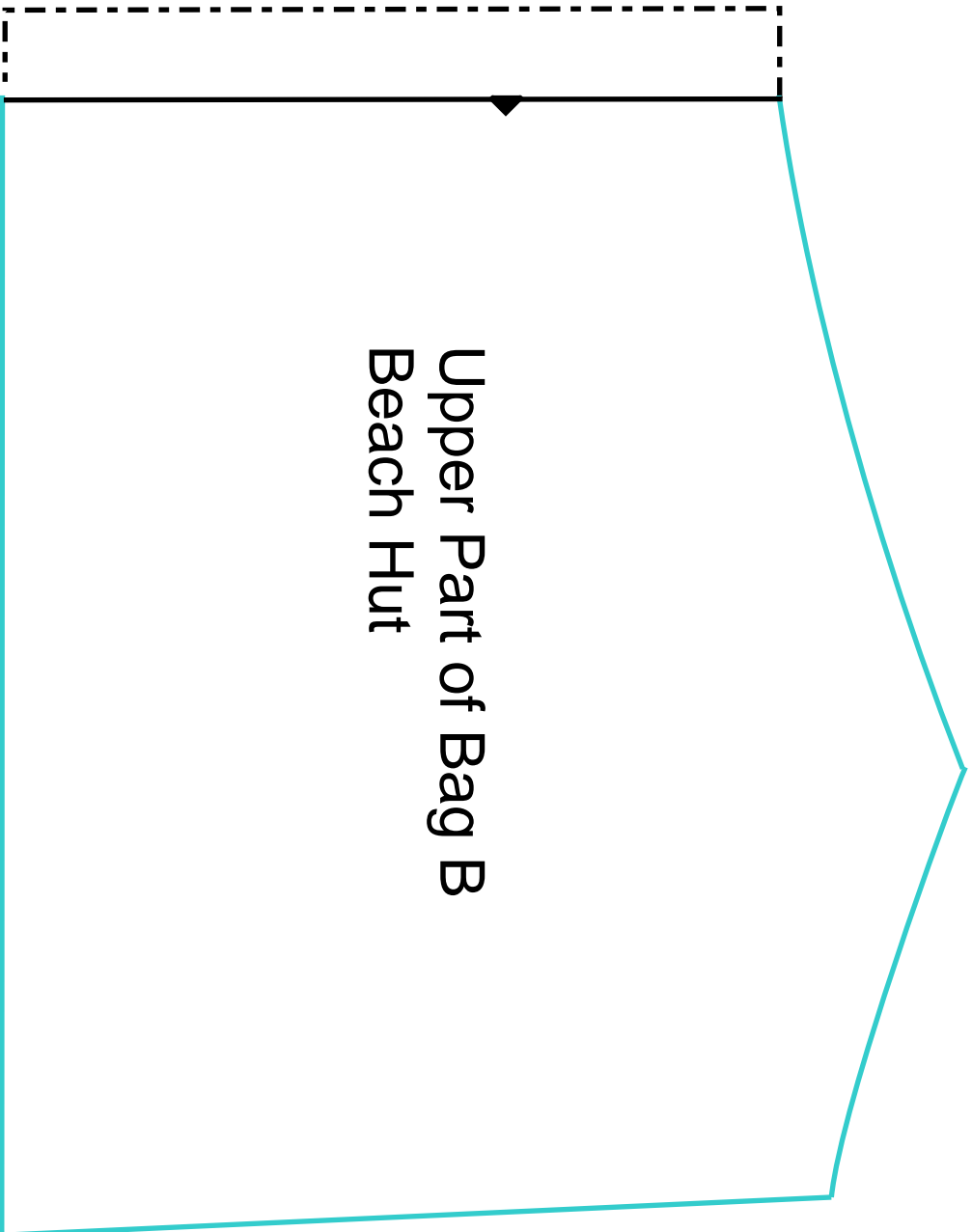


Upper Part of Bag A  
Beach Hut Theme  
Shell Fabric  
Cut 2x

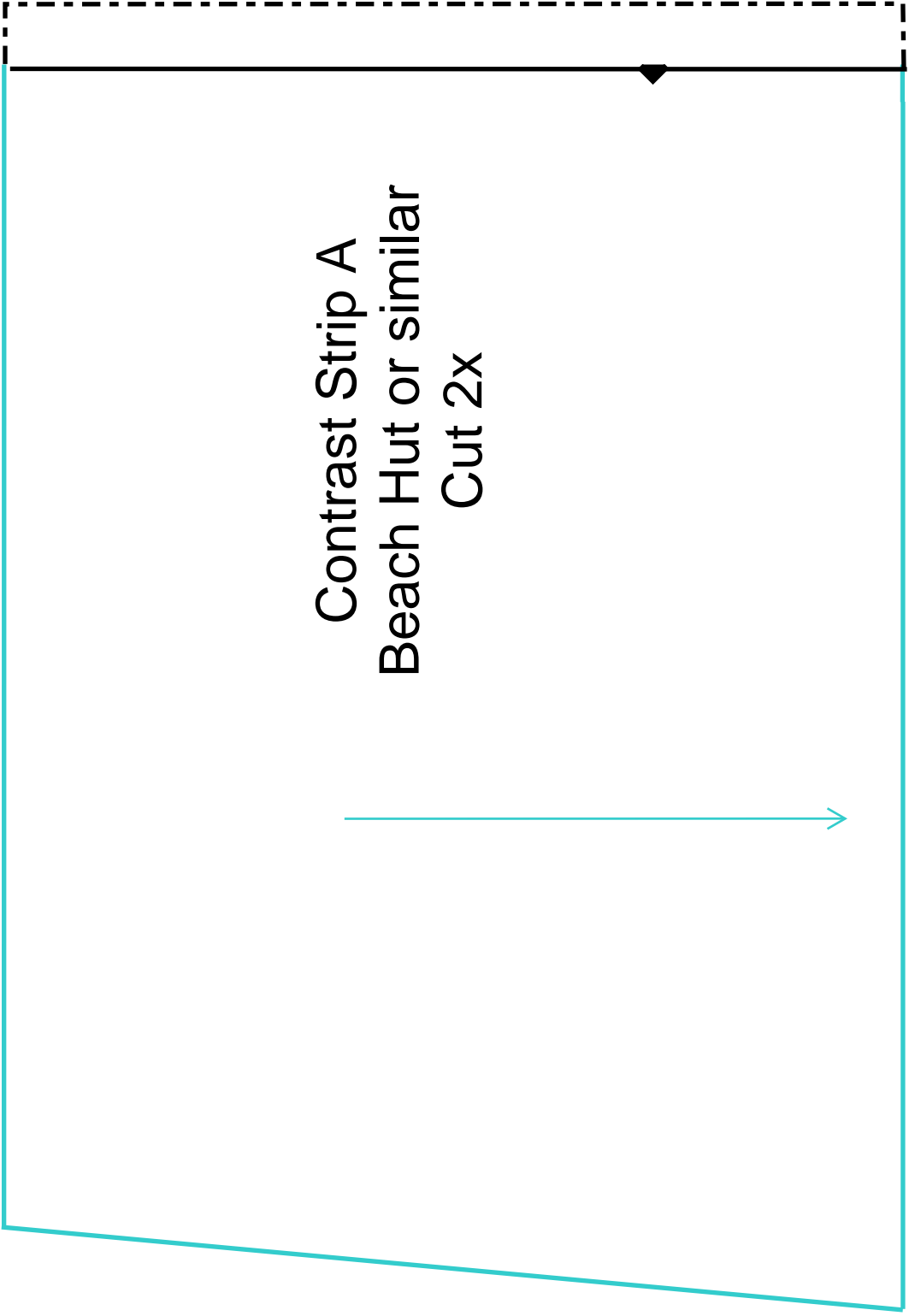
Base A  
Beach Hut Theme  
Cut 2x



Upper Part of Bag B  
Beach Hut



Contrast Strip B  
Beach Hut

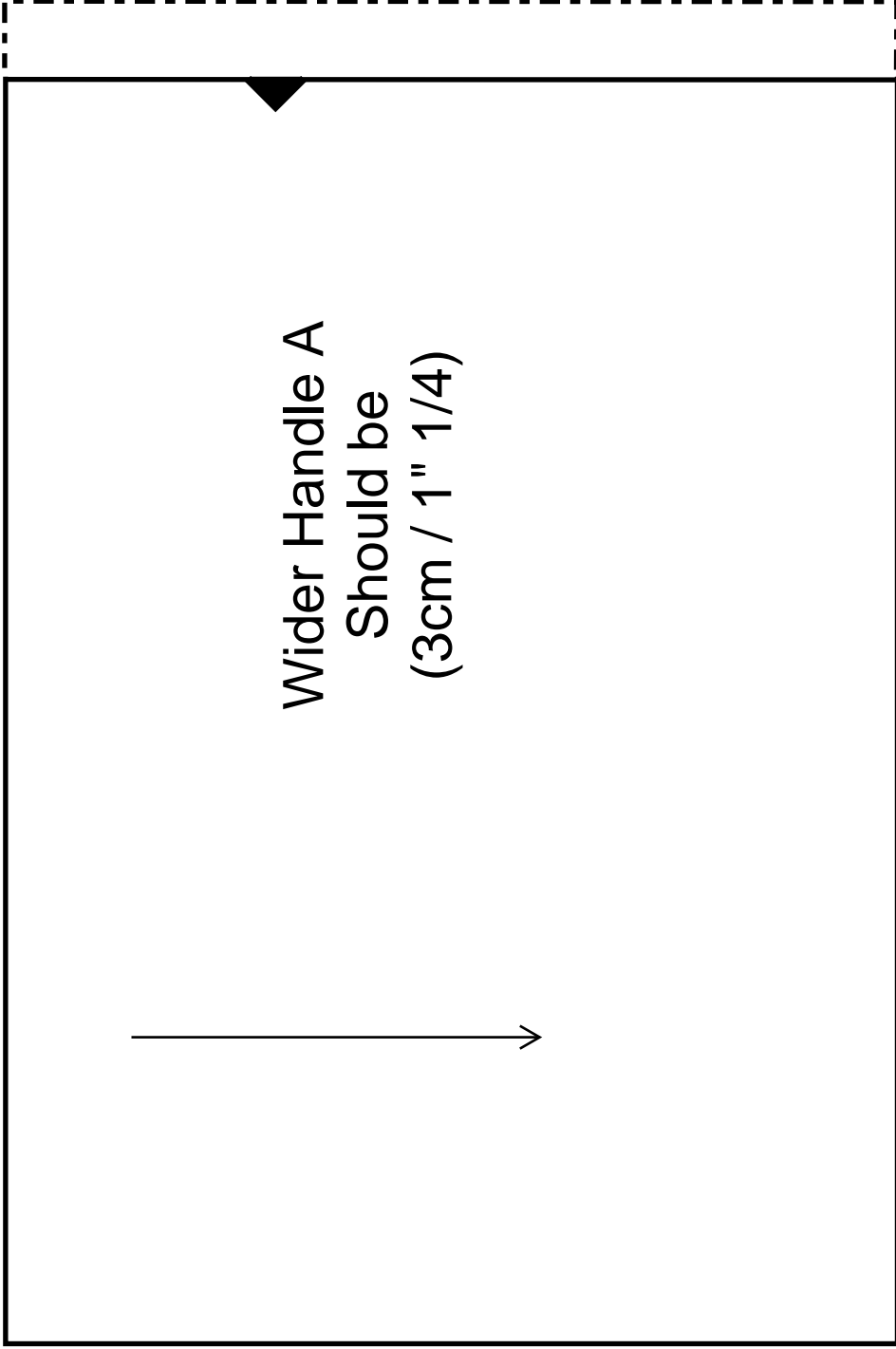


Contrast Strip A  
Beach Hut or similar  
Cut 2x

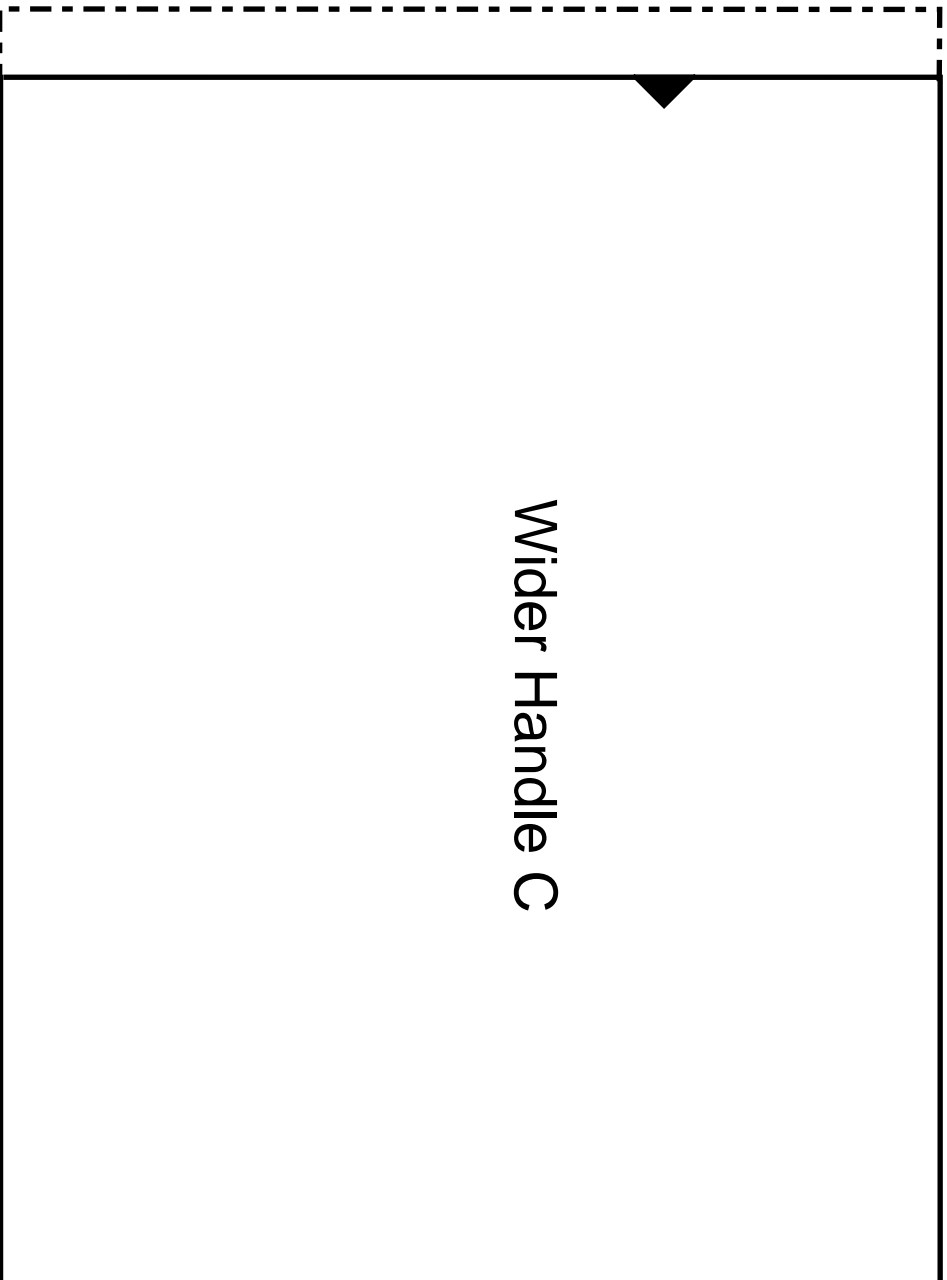




Wider Handle A  
Should be  
(3cm / 1" 1/4)

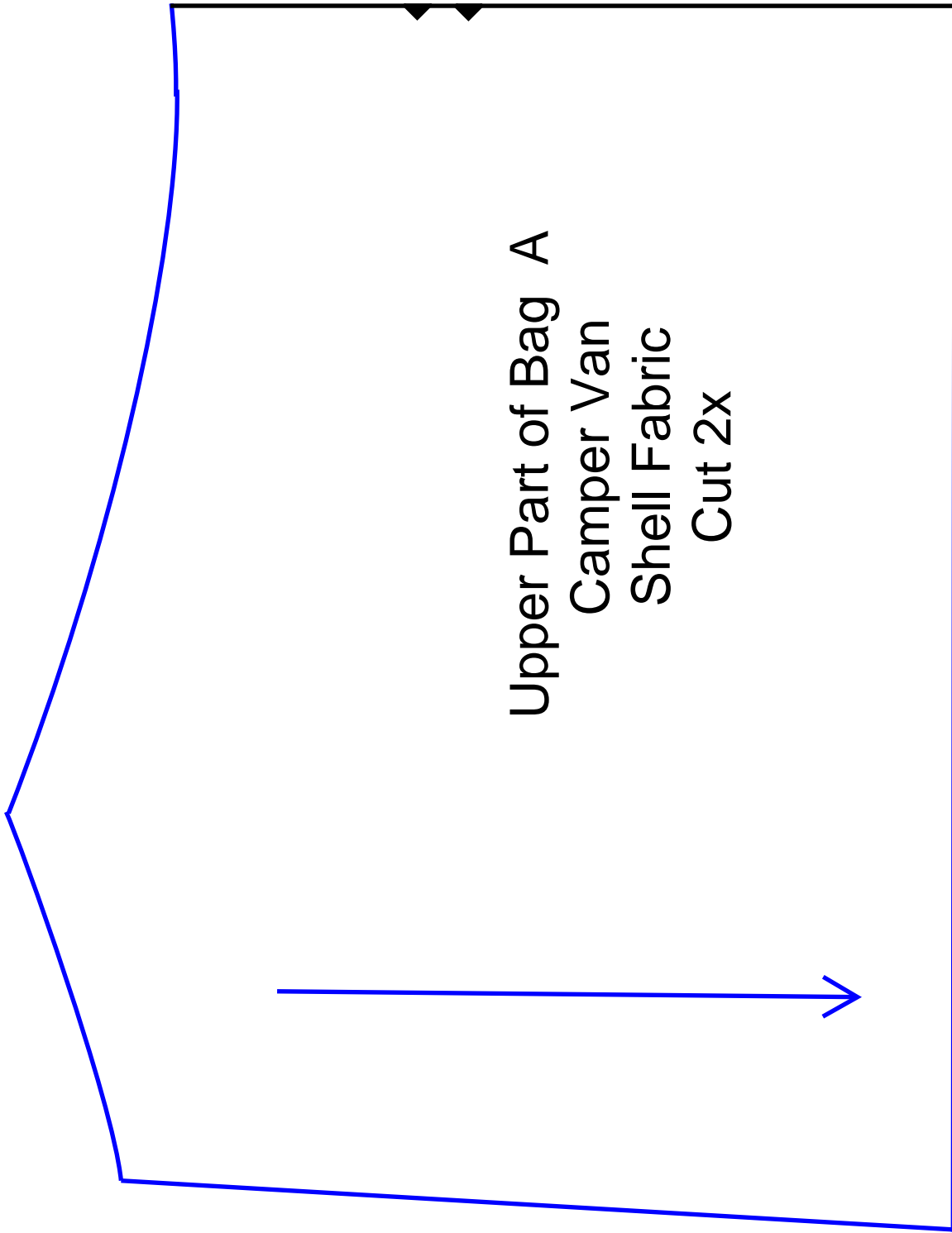


Wider Handle C



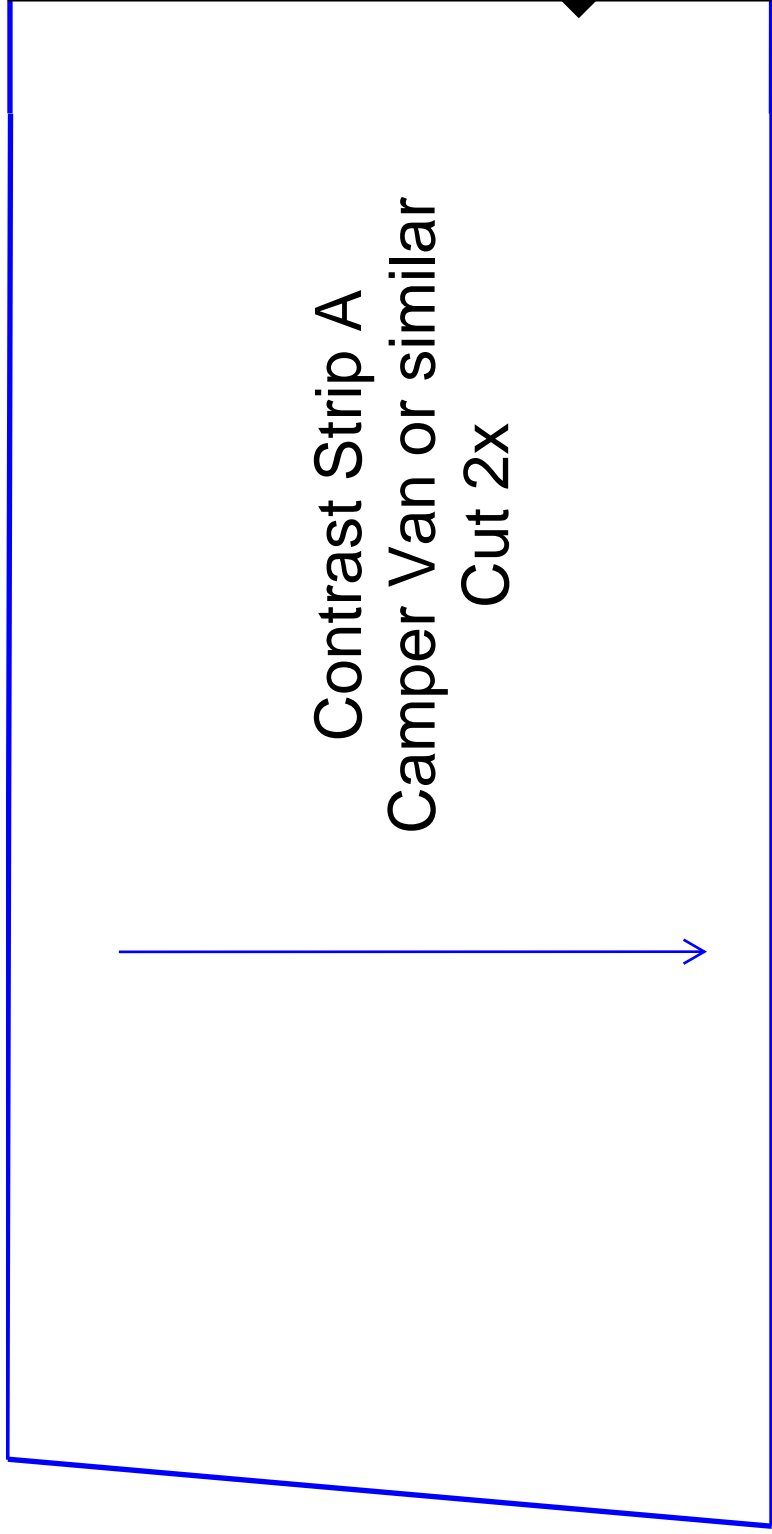
Wider Handle B





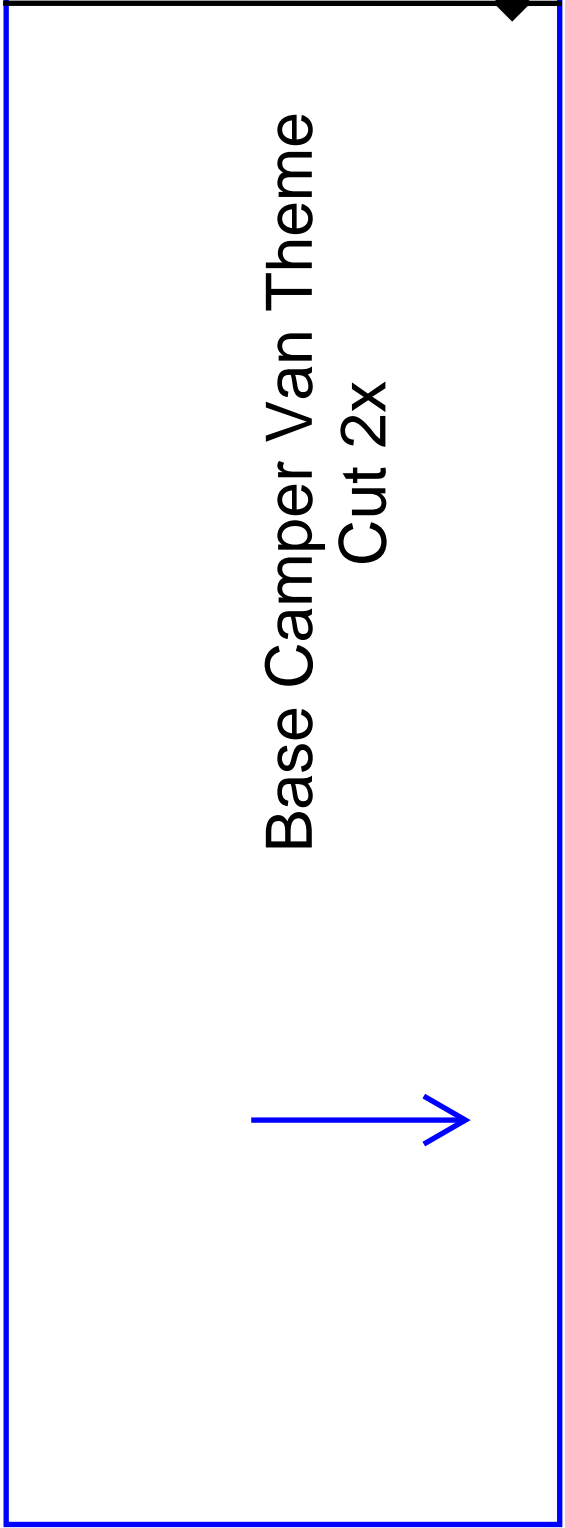
Upper Part of Bag A  
Camper Van  
Shell Fabric  
Cut 2x

Contrast Strip A  
Camper Van or similar  
Cut 2x



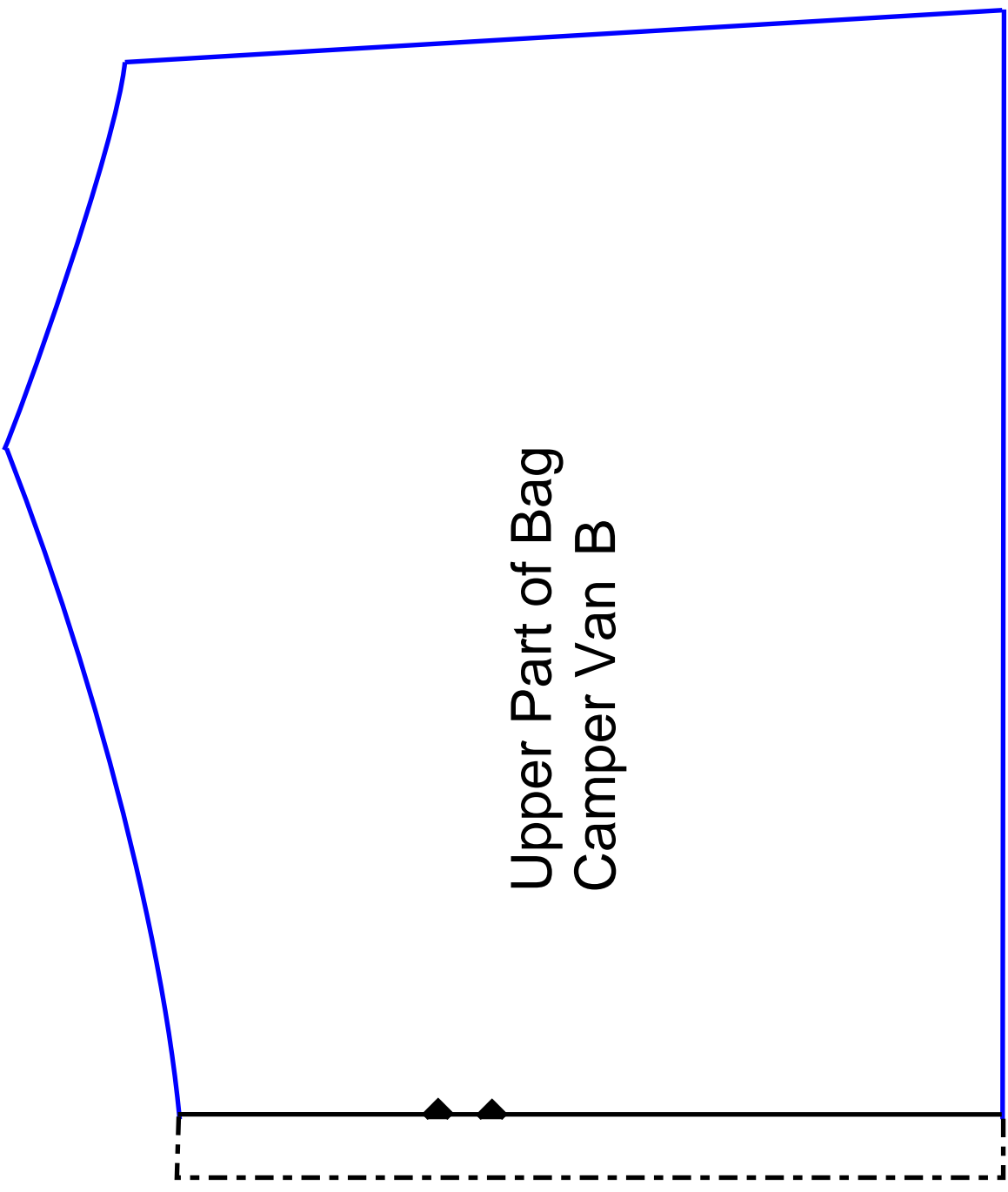


Base Camper Van Theme  
Cut 2x



Base Camper Van B

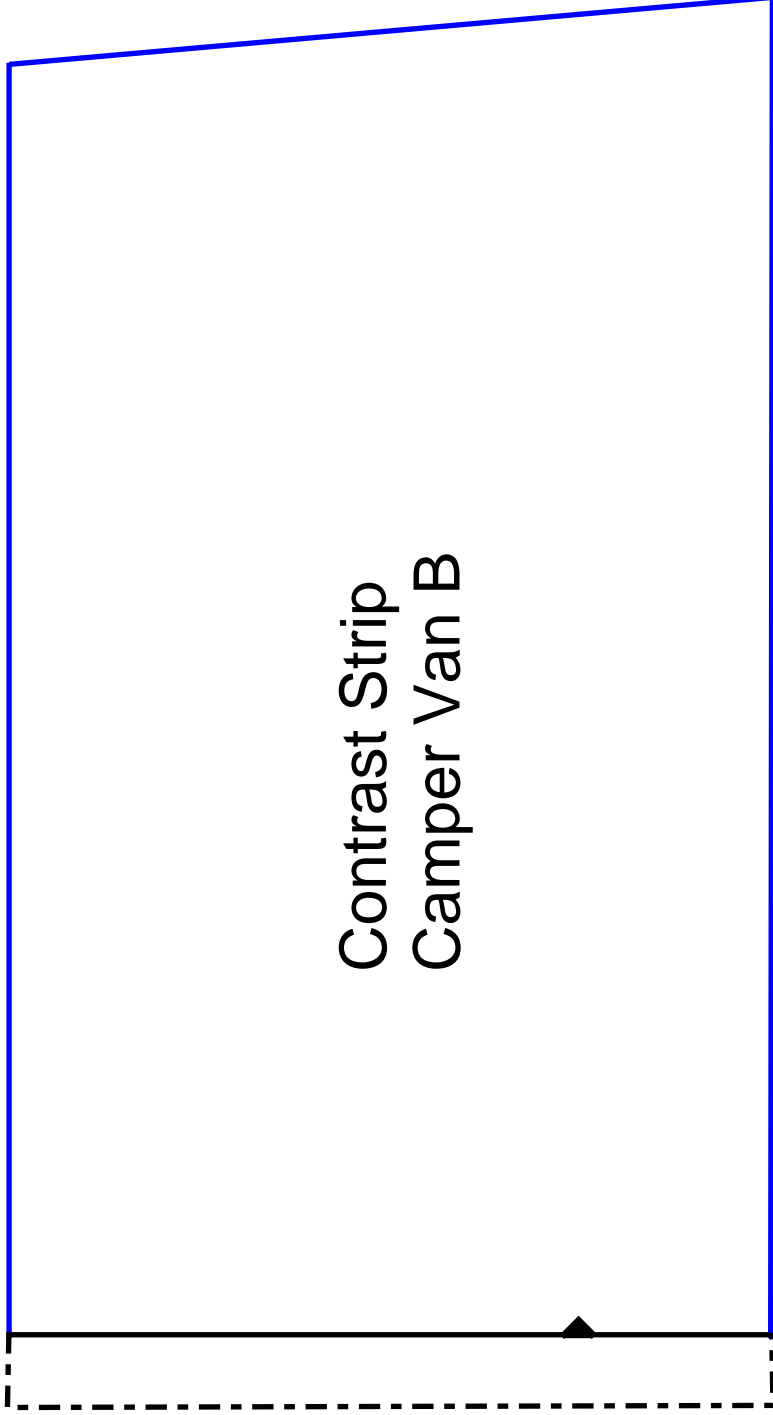




Upper Part of Bag  
Camper Van B



Contrast Strip  
Camper Van B



**Slimmer Handle**

fits rings

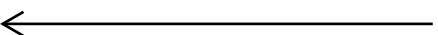
2.5-2.9cm (1-1.2 inches)

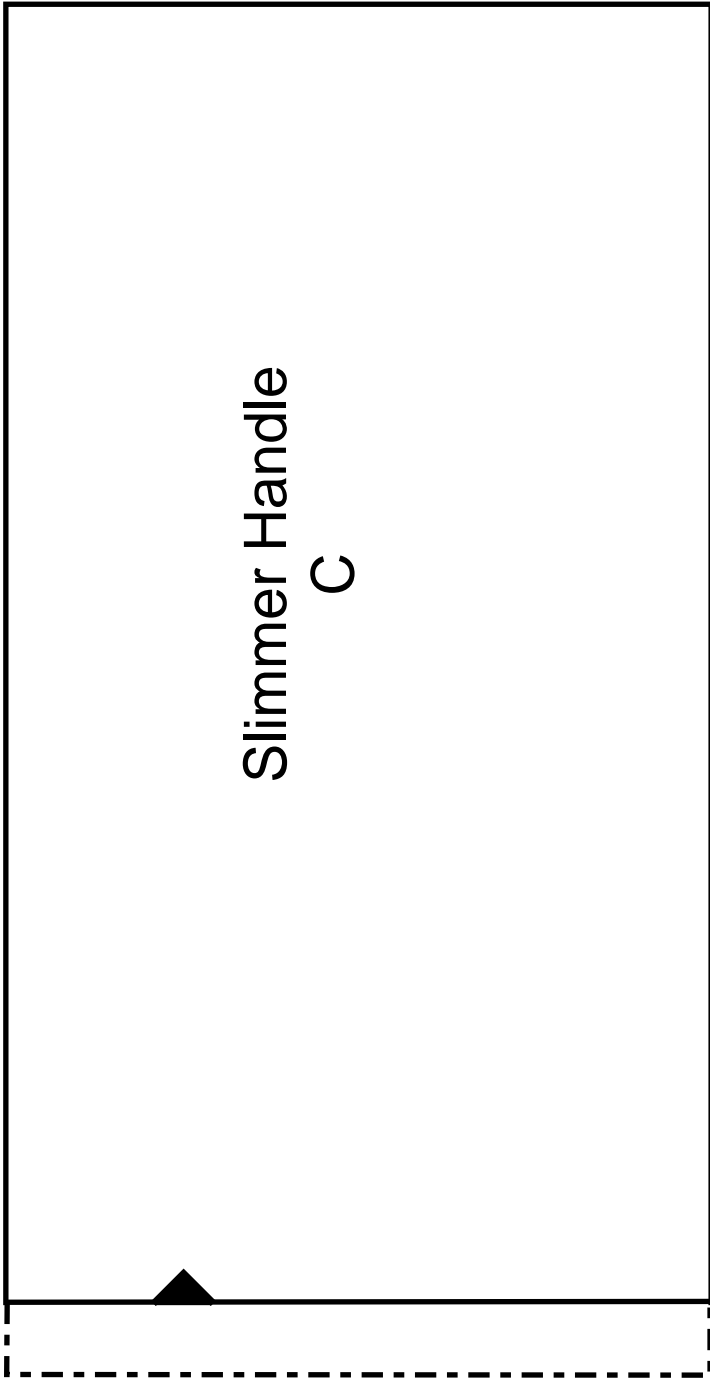
inner width

Cut 2x

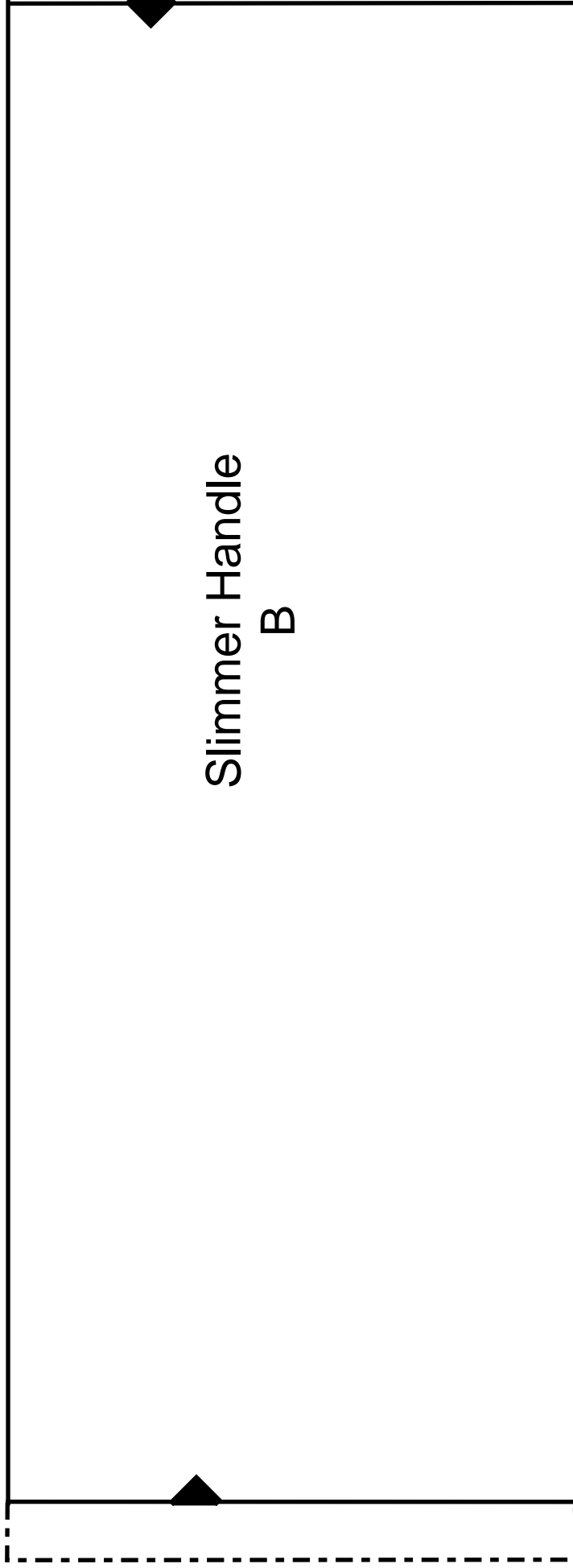
(Handle should be

2.5cm/1.2inches)





Slimmer Handle  
C



Slimmer Handle  
B