

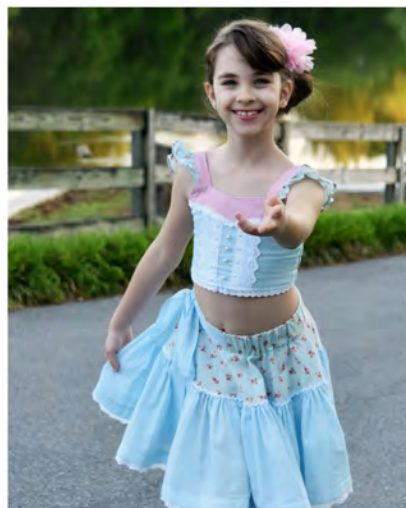
Vintage Collection

Bonnie Tiered Skirt



The Frocks & Frolics Sewing Academy

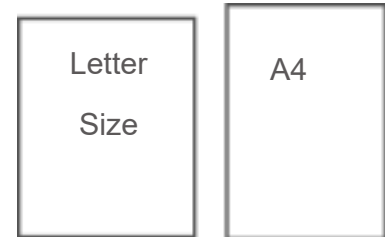
| | |
|---|----|
| Contents | 1 |
| Printing the Pattern | 2 |
| Your Pattern Pieces explained in Detail | 3 |
| Size Chart | 4 |
| Fabric Requirements | 5 |
| Notions | 5 |
| Layout Plan | 5 |
| Cutting the Skirt (rectangle) | 6 |
| Sewing the Ties (optional) | 7 |
| The Waistband | 8 |
| Sewing the Yoke to the Waistband | 9 |
| Inserting the Elastic | 10 |
| The Skirt Seams and Hemming Options | 11 |
| Attaching the Skirt to the Yoke | 12 |
| Our Facebook Group | 13 |
| Impressum | 14 |
| Fabric Shop / Modes4U | 15 |



ABOUT OUR PATTERNS

Our patterns use a one size per file system for all children's patterns, unique to Frocks & Frolics in both Din A4 and letter size format. This allows Marina to make specific alterations to certain sizes and ages, giving each individual pattern a tailored fit. It is also much easier to cut out and it doesn't waste so much paper.

If you live in the US you need the letter size paper format which is wider and shorter than the more commonly used DIN A 4 metric paper, which is used across the rest of the world.



PRINTING

Choose the format you are going to print, either letter size or DIN A 4.

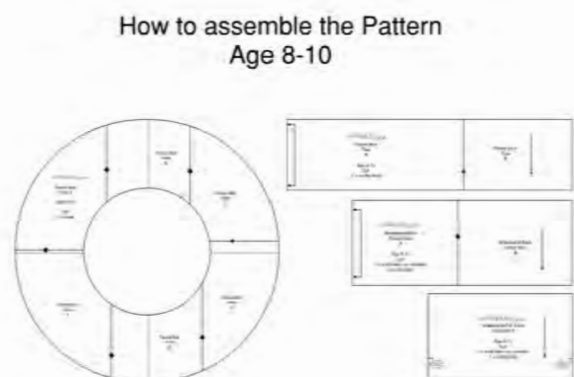
Ensure you print from your laptop or PC using [Acrobat Reader DC](#) as this ensures it will print to scale.

Pre-installed programs often reduce the size by a small amount, which makes a big difference to the pattern. Adobe has an option: 'shrink to fit'. Please disable it, as it will also shrink the pattern.

Print at 100% or actual size. Print the first page with the test scale and check the measurement. There are two scales, one which measures 1 inch for customers working in Imperial and one measuring 5 cm for my customers working with the Metric system. If the measurement is correct, print off the rest of the pattern.

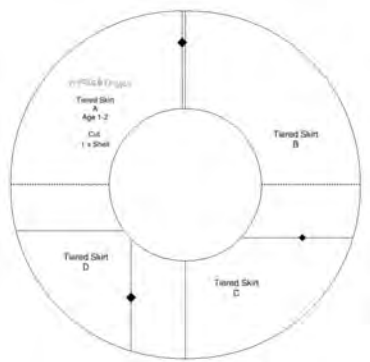
PATTERN ASSEMBLY

The patterns can be cut out as they are, no sizing needed, then they are put together according to their little flower marker. A pink flower for the back, a white flower for the front. When there is no front or back the markers are omitted. Pattern pieces are put together in alphabetical order and clearly labeled as A, B, C etc. There is an assembly plan in your pattern file. It is usually the last page pattern file.



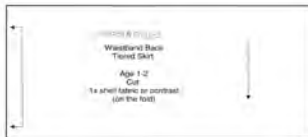
YOUR PATTERN

Let's have a look at your pattern pieces. Please note, that there is no pattern piece for the skirt, which is a rectangle. How to cut that piece is explained on page 6.



The Yoke

I drafted a complete circle for you so its easier to cut. If you prefer to fold your fabric and cut just a quarter you can cut along the dotted lines to reduce the pattern. I personally like the whole circle. You can also extend the circle and create a circle skirt. Having a circle which will fit the waistband perfectly is a great little pattern to have at your disposal.



The Waistband

To make it easier to add elastic to the skirt and create a super cute front, which can be embellished, I drafted the waistband in two sections. The back, which will hold the elastic and the front which will be reinforced with iron-on interfacing. There are also markings for the optional ties. The markings work well to center a ribbon, just in the right place.



The Ties (optional)

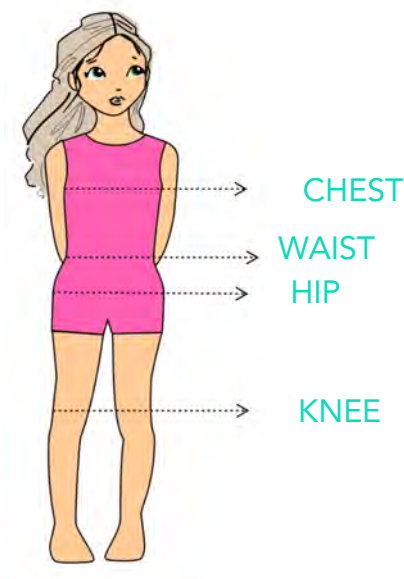
You will also notice the markings on the front piece for the optional ties. They can be tied at the back or extended to wrap around the waist and be tied at the side.



SIZE CHART

The pattern works without a fastening because the waistband has the measurement of the hip plus 2 cm ease. This is enough to pull the skirt on and also create a smooth yoke. Make sure that the size you choose will fit over the hips. This skirt is super easy to adjust by simply adding or reducing the length of the yoke and skirt.

| Age | Height | Chest | Hip | Waist |
|-------|---------------|------------------|----------------|------------------|
| 1-2 | 92 cm 36" | 53 cm 20.9" | 53 cm 20.9" | 53 cm 20.9" |
| 2-3 | 98 cm 39" | 54.7 cm 21.5" | 55 cm 21.7" | 54.7 cm 21.5" |
| 3-4 | 104 cm 41" | 56 cm 22" | 59 cm 23.2" | 56 cm 22" |
| 4-5 | 110 cm 43" | 60 cm 23.5 | 62 cm 24.4 | 57.3 cm 22.6" |
| 5-6 | 116 cm 46" | 62 cm 24.4" | 65 cm 25.6" | 59 cm 23.2" |
| 6-7 | 122 cm 48" | 63 cm 24.8" | 70 cm 27.6" | 59.8 cm 23.5" |
| 7-8 | 134 cm 53" | 67 cm 26.4" | 73 cm 28.7 | 61.7 cm 24.3" |
| 8-10 | 140 cm 55" | 72 cm 28.3" | 75 cm 29.5" | 63.6 cm 25" |
| 10-12 | 146 cm 58" | 76 cm 30" | 78 cm 30.7" | 66.1 cm 26" |



HOW TO MEASURE YOUR CHILD

Chest

Measure across the widest part of the chest, just below the armpit.

Waist

Smallest point of the torso

Hip

Widest part of the hip

Knee

Garment stops slightly above the knee

WHAT YOU NEED

Let's talk fabric! This skirt is ideal for all woven lightweight to medium weight fabrics in cotton or linen. A lighter fabric will work best for the skirt. Because you have some volume, here even shirting fabrics are heavy enough and will give a beautiful finish. You can set accents by using different fabrics for the yoke and front waistband. Generally its best to not have too many different fabrics involved, keeping the waistband and yoke in one color. That being said, do surprise me with your awesome creations!

The measurements in the chart below are based on a fabric width of 140 cm (54 inches). Less width will result in the ties not fitting on in one go across the fabric. You can either add a seam or cut them along the selvedge instead.

Do I need a serger? You do not need a serger but seams will look more professional if you do. If you are looking for a reasonable serger, you can get the one I use, [here](#).

FABRIC REQUIREMENTS

| Age | Height | Yoke, Waistband, Ties | Skirt (rectangle) |
|-------|--------|-----------------------|-------------------|
| 1-2 | 92 | 50 cm 20" | 25 cm 10" |
| 2-3 | 98 | | |
| 3-4 | 104 | | |
| 4-5 | 110 | 60 cm 24" | 27 cm 11" |
| 5-6 | 116 | | |
| 6-7 | 122 | | |
| 7-8 | 134 | 70 cm 28" | 30 cm 12" |
| 8-10 | 140 | | |
| 10-12 | 146 | | 35 cm 14" |

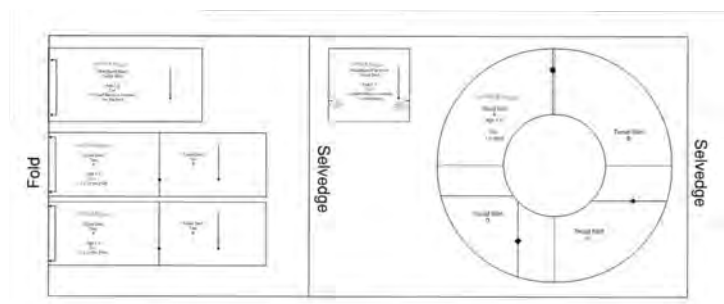
NOTIONS

| Age | Height | Iron on Interfacing | Elastic length 4 cm (1.5") wide | Extras |
|-------|--------|---------------------|------------------------------------|-----------------------------|
| 1-2 | 92 | 10 cm 4" | 37.9 cm 14.9" | Matching Thread 1 Reel |
| 2-3 | 98 | | 39.5 cm 15.5" | |
| 3-4 | 104 | | 40 cm 15.7" | |
| 4-5 | 110 | | 40.9 cm 16.1" | Standard Needle 80 |
| 5-6 | 116 | | 42 cm 16.5" | |
| 6-7 | 122 | | 42.7 cm 16.8" | Serger Thread (optional) |
| 7-8 | 134 | | 44 cm 17.3" | |
| 8-10 | 140 | | 45.5 cm 17.9" | |
| 10-12 | 146 | | 47 cm 18.1" | |

LAYOUT PLAN

Fold over one edge of the fabric until the ties and waistband fit.

You will cut the ties and the back waistband on the fold. The front waistband and the yoke (circle) are cut just once each.



CUTTING THE SKIRT

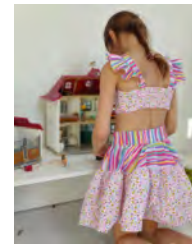
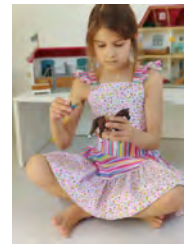
The skirt has no pattern piece as it is a simple rectangle. The chart gives you the exact lengths for the skirt. The skirt ends at knee height. If you require a longer length, you can add 3-5 cm depending on the size you are making. Please bear in mind, if you are adding a voluminous petticoat the skirt will seem slightly shorter.

Always cut the full width of the fabric. For a fabric width of 1.4 m (55") you will achieve a medium density, pretty gather (Diagram: cutting option 1).

Fabrics with less width and skirts for sizes 7-12 will only result in a light gather. For all that gorgeous volume, cut the skirt along the selvedge instead (diagram: cutting option 2)

Alternatively, if your fabric has a distinct vertical pattern, cut 4 panels for the skirt at maximum width.

| Age | Height | Skirt (rectangle) | Panel Length (cut 2x) |
|-------|---------------|-------------------|-----------------------|
| 1-2 | 92 cm 36" | 19.5 cm 7.8" | 1.2 m 47" |
| 2-3 | 98 cm 39" | 22.5 cm 8.9" | |
| 3-4 | 104 cm 41" | 23.5 cm 9.3" | |
| 4-5 | 110 cm 43" | 25 cm 9.8" | 1.4 m 55" |
| 5-6 | 116 cm 46" | 25.5 cm 10" | |
| 6-7 | 122 cm 48" | 26.5 cm 10.4" | |
| 7-8 | 134 cm 53" | 27 cm 10.6" | 2 m 79" |
| 8-10 | 140 cm 55" | 29 cm 11.4" | |
| 10-12 | 146 cm 58" | 31.5 cm 12.4" | |



In this example the 1.4m width was cut twice for age

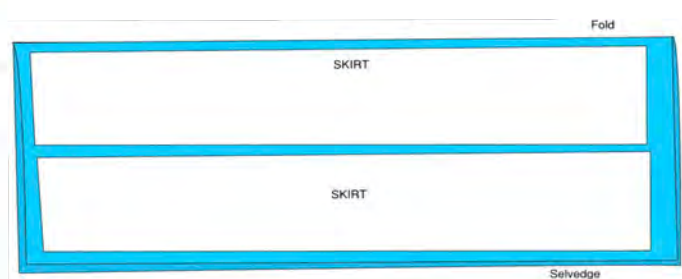


In this example 2m length was cut twice for age 6-7.

Cutting Option 1: Age 1 - 6:



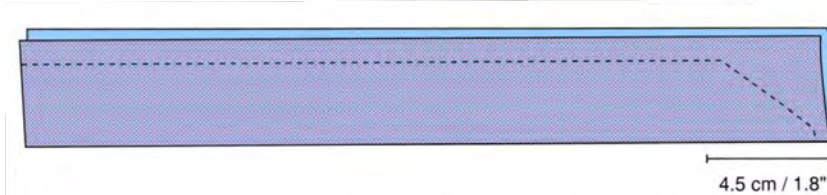
Cutting Option 2: Age 7 - 12:



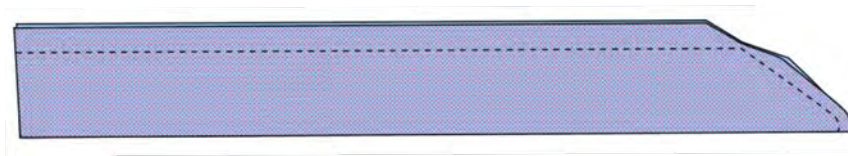
THE TIES (OPTIONAL)

Before we start, please note that the seam allowance is always 1 cm (3/8"), unless stated otherwise.

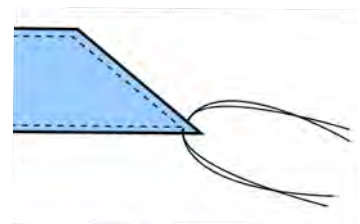
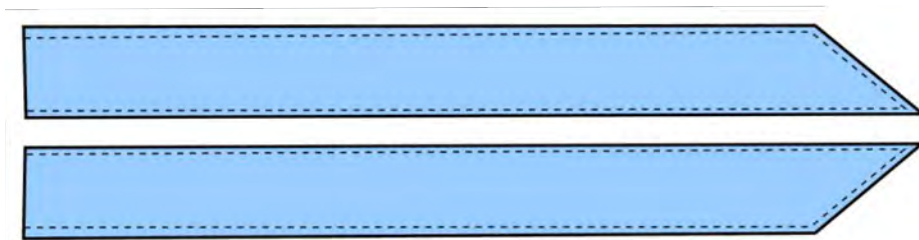
The ties are optional and are inserted into the waistband.



Hold the ties with the right sides together, length ways in half. Add a tip if you like. Create a line to the tip, about 4.5 cm / 1.8" from the tip. To create a really sharp tip, make sure you round off the point while sewing, reducing the stitch length to 1.5. Sewing a straight line to the tip point, will result in the rounded end, you want to avoid. The reason for the rounded end is, that there simply isn't enough room to accommodate the seam allowance.

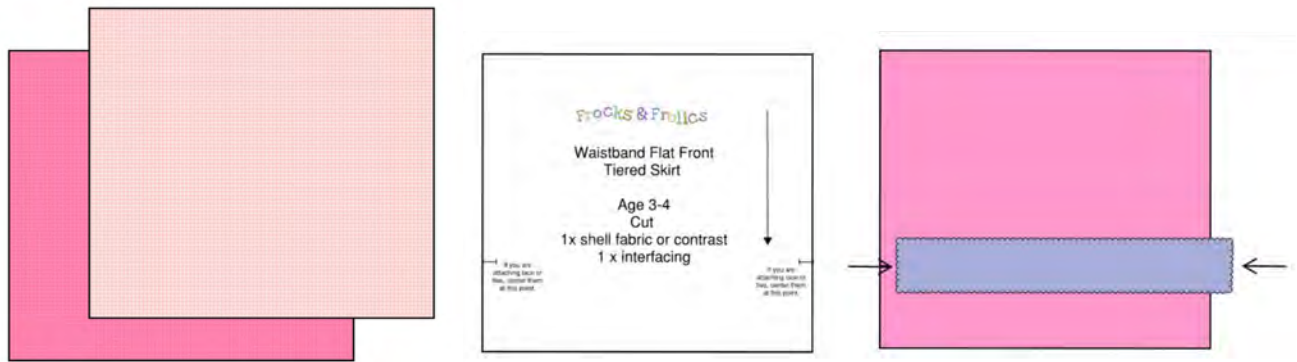


Cut back the tip and turn the ties. Use a pencil or the end of a cooking spoon. Make sure you lift out the corners well and iron. Roll out the edges while you are ironing.

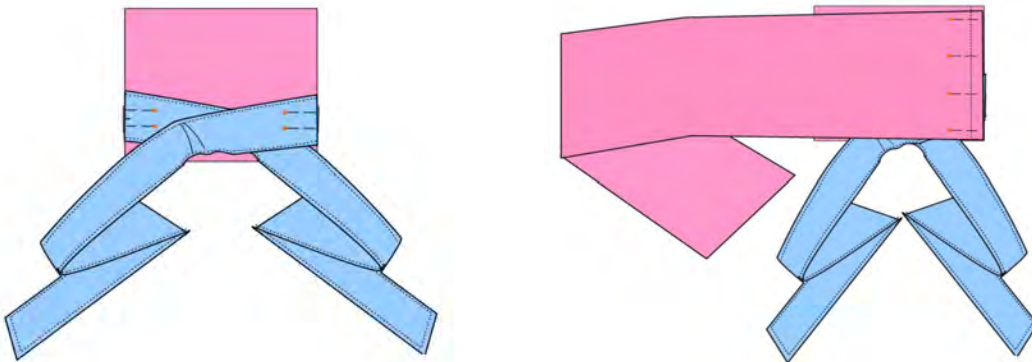


Topstitch the ties close to the edge with stitch length 3.5. Using a longer stitch will make the ties look more professional. If you have a machine which transports fabric badly, pull a double thread through the tip of the tie, and pull slightly as you sew this area.

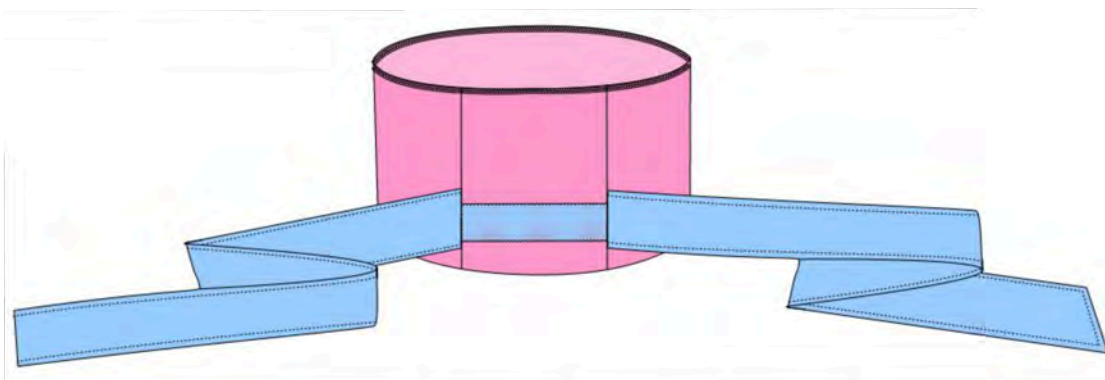
THE WAISTBAND



The waistband has two parts. The front is not elasticated and must therefore be strengthened. Iron the interfacing to the wrong side of the front waistband. Now turn the front waistband over and decorate the front with a pretty lace or a ribbon. On your pattern piece you will find markings on the right and left side, telling you where to center the ties or embellishment. Ensure the embellishment centers on that mark.



Place the ties over the ribbon and center in the same way. Pin into place. Now sew the back part of the waistband to the front waistband with the right sides together. Repeat with the other side. Now you have a complete circle. Iron the seams towards the front and serge the waistband edge that will face the inside of the skirt. If you do not have a serger, the edge will be turned in as described on page 9.



SEWING THE YOKE TO THE WAISTBAND

The yoke comes as a complete circle. Quarter the waistband and the yoke.

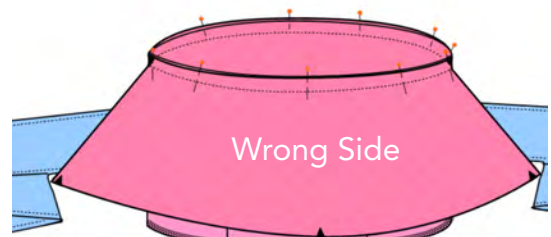
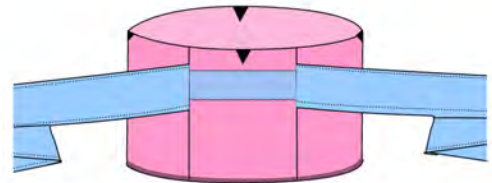
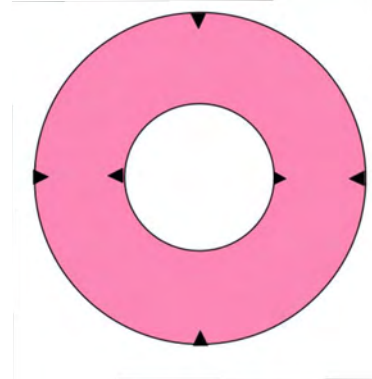
Yoke:

Make sure that the area where the grain runs straight is marked on either side. This will be attached to the side seam mark of the waistband. The skirt falls beautifully if the center front mark is where your fabric is on the diagonal. This is really important when you are using a check fabric for example. Also mark the center front and back.

Waistband:

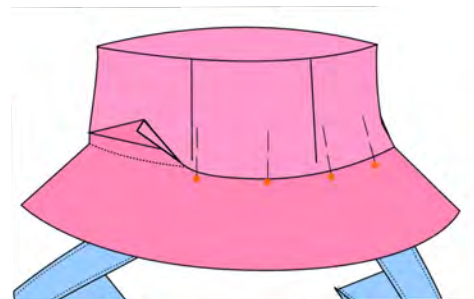
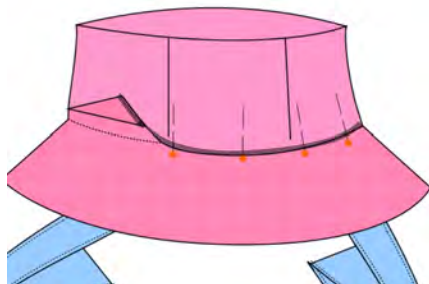
Quarter the waistband by marking the center front and back first, then the side seam markings/notches. As there are no side seams in this pattern, these notches are really important!

Place the inner edge of the yoke with right sides facing over the waistband. Align your notches and pin.



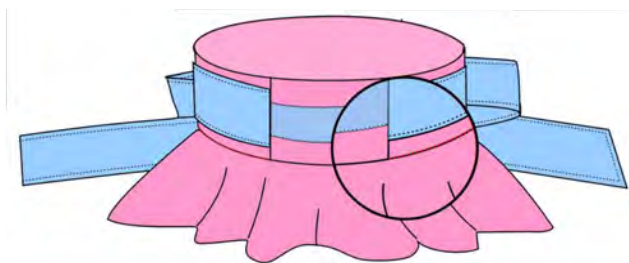
Iron the seam into the waistband, fold over the top edge of the waistband and pin it to the seam. If the edge is serged, make sure the seam allowance reaches below the seam, pin and sew.

Alternatively turn in the edge, especially if you haven't got a serger as it will leave a very neat edge.

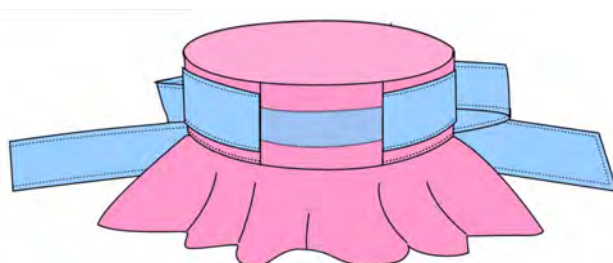


INSERTING THE ELASTIC

Sew the waistband to the seam, from the beginning to the end of the back waistband, leaving the front open. You can either sew in the ditch if the edge of the waistband was serged or on the waistband if you have turned in the edge. In that case sew close to the edge with stitch length of 3.5.

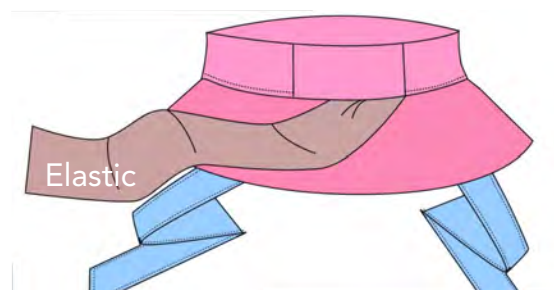


Top stitched in the ditch

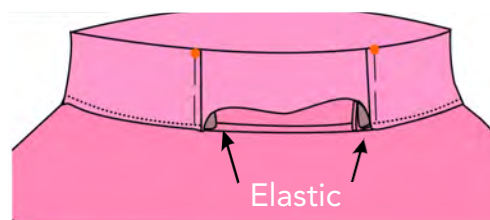


top stitched

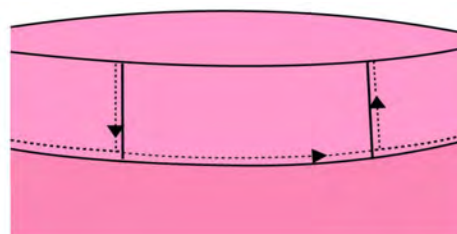
Now we can put the 4 cm (1.5 inches) wide elastic into the casing/tunnel. If you only have the usual 2.5 cm (1") wide elastic you can zig-zag two pieces together down the middle. Insert the elastic with a safety pin and pull through, until it aligns with the seam allowance. Secure with a vertical pin.



Once the elastic is pulled through to the other side and sits on the seam allowance (this means it is exposed) also secure with a vertical pin.



Top stitch from the edge of the waistband down, across and back up, securing the elastic and the waistband in one go. If you stitched in the ditch the process is exactly the same. Just sew down the ditch from the top edge, then across and back up.

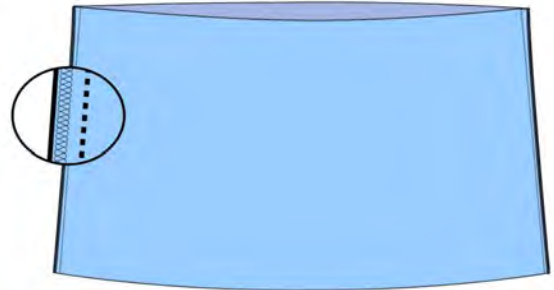


Finally, you have the option of top stitching the elastic through creating a number of rows or leaving it as it is.

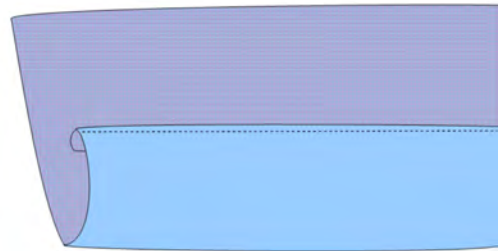


THE SKIRT SEAMS AND HEMMING OPTIONS

Close the side seams of the skirt. Serge the seam and then iron the seams towards the center back.



Now we are moving on to the hem. The pattern allows for a hem of 3 cm. You can turn it in 1 cm and up two for a classic hem. Alternatively simply serge the edge and turn it up 2 cm.



A LITTLE BIT OF LACE

Adding a little lace to the hem is always a winner with our girls! For this skirt I used one of my favorite hemming techniques. You will love this!



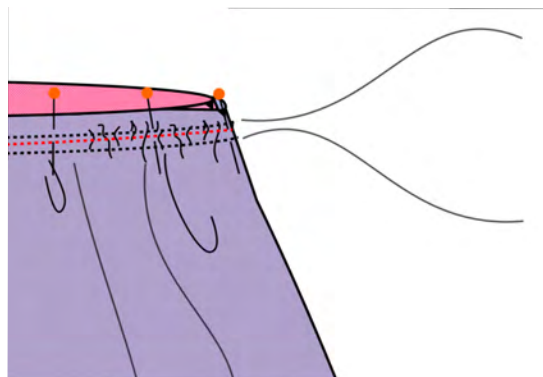
To create this effect, sew the lace to the edge first right sides together. Serge the seam and then roll the hem down a little bit so that a little lace peeps out.

Finally topstitch the hem into place.



SEWING THE SKIRT TO THE YOKE

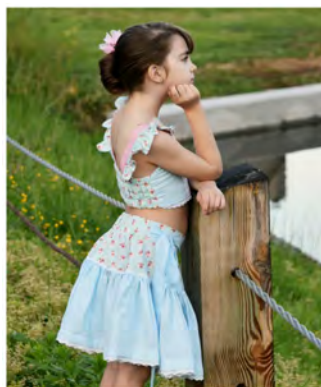
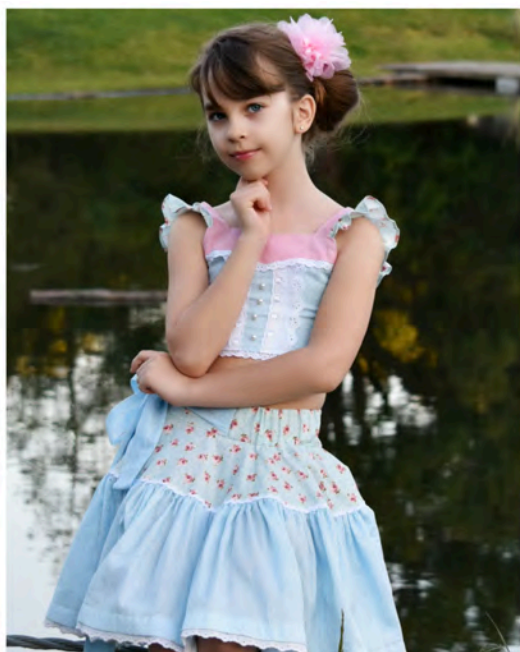
Next we are gathering the skirt's upper edge. Divide the skirt into quarters and mark.



Insert two rows of stitching, choosing the longest stitch length your machine provides. Place the yoke inside the skirt, right sides together and align the four notches for the CF, CB and the sides on both the yoke and skirt.

Pull the visible set of gather threads, until they fit the space. Pin the gathers neatly with pins running horizontal or vertical and sew, arranging the gathers as you go, with a pin. Your stitching line should be right between the gather stitches. (1 cm / 3/8" seam allowance).

Remove the gathering threads and serge the edge. Iron the seam allowance into the yoke and top stitch close to the edge with stitch length 3-3.5.



---Congratulations---
You finished your
Bonnie Skirt!

Our Facebook Group [JOIN US](#) for some fun Sewing and Chatting

If at any point while sewing this pattern you run into trouble and need helpful tips, find the 'Frocks & Frolics Sewing Circle' on Facebook.

I have got to know so many of you through the group and it's making the job of creating patterns such an enjoyable task. Your comments telling me you appreciate the detail and work that goes into making a pattern, which fits super and looks great too, is what keeps me going! But remember if you run into problems and tell me about it, I can make my patterns even better! So thank you for all your support.

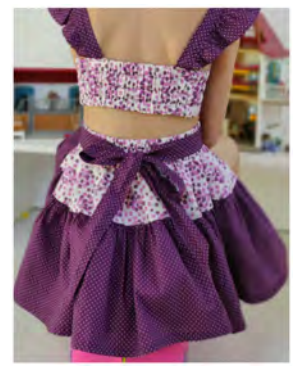
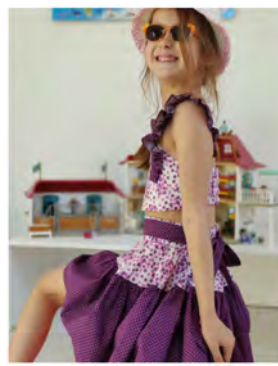
Marina

I can't wait to see more of your ideas.

When you post on Instagram please use the handle @frocksandfrolics and hashtags:

#springcollection, #frocksandfrolics, #tieredskirt

Thank you, my wonderful testers!



Impressum

| | |
|--------------------------------------|---|
| Producer: | Frocks & Frolics |
| Designer: | Marina Brumpton, Emily Holland |
| Photography: | Marina Brumpton, Ela Berbic Brown, Emily Holland, Melissa Calcutti |
| Testers: | Anna Schmöger, Emily Holland, Frieda Flavianu |
| Contact: | frocksandfrolicsflowergirls@gmail.com |
| Address: | S. Genessee Ave Los Angeles USA |
| Website: | frocksandfrolics.com |
| Facebook: | https://www.facebook.com/Frocks-Frolics-156118561138703/ |
| Frocks and Frolics Sewing Circle: | https://www.facebook.com/groups/733648706761805/ |
| Instagram: | https://www.instagram.com/frocksandfrolics/ |

Frocks & Frolics

The Frocks & Frolics Sewing Academy

<https://frocksandfrolics.com>



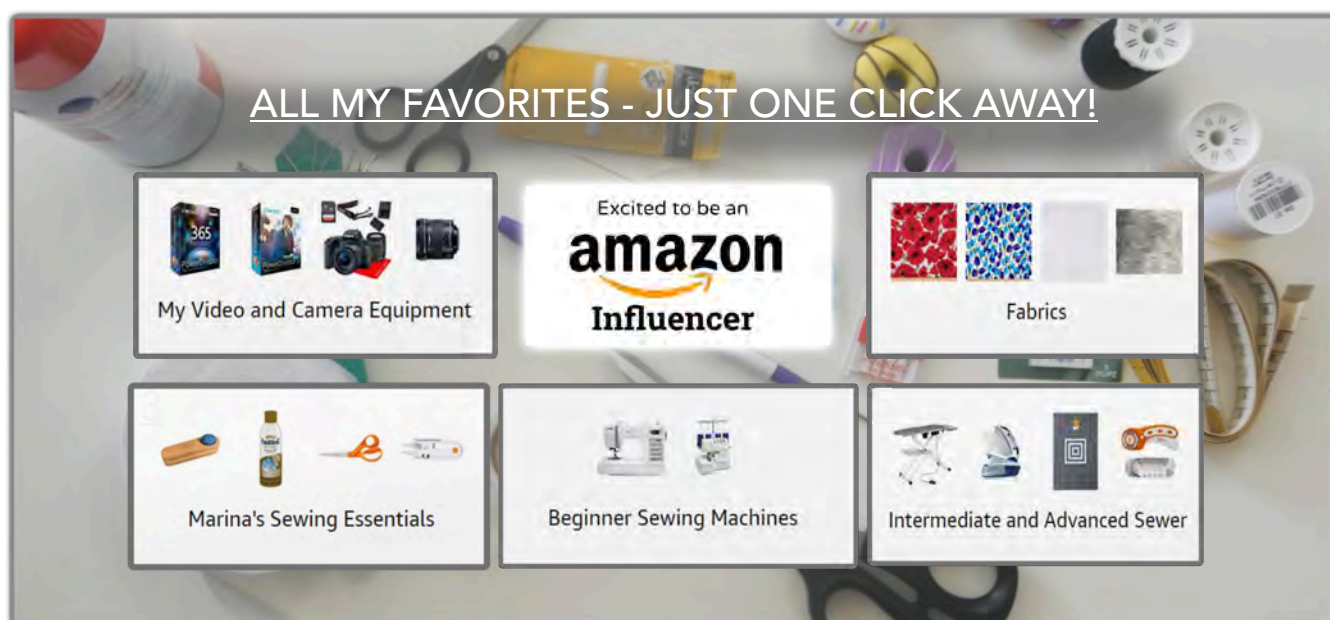
OUR SHOP ON AMAZON

Who doesn't like the quick delivery Amazon offers!

When you purchase through my shop, I do get a small commission.

Browse my list of products for beginners and advanced sewers, which are all tried and tested. Make the Frocks & Frolics Shop your starting point for all purchases great and small and support a small business venture.

Happy Shopping!



ONE STOP FABRIC SHOP

For fabrics, I found a great fabric shop which delivers worldwide, so I can make sure you can get the fabrics I use without searching high and low! Please check the [Modes4u fabric shop](#), we have all the links to the fabrics in the collection!

Modes4u.com is run by Sandra Boch, a very nice Austrian lady and her team. Shipping is free if you spend 60€ / US \$70 / £55 or more.

I would give that the big thumbs up!

Happy Shopping!

