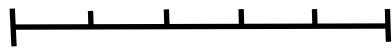
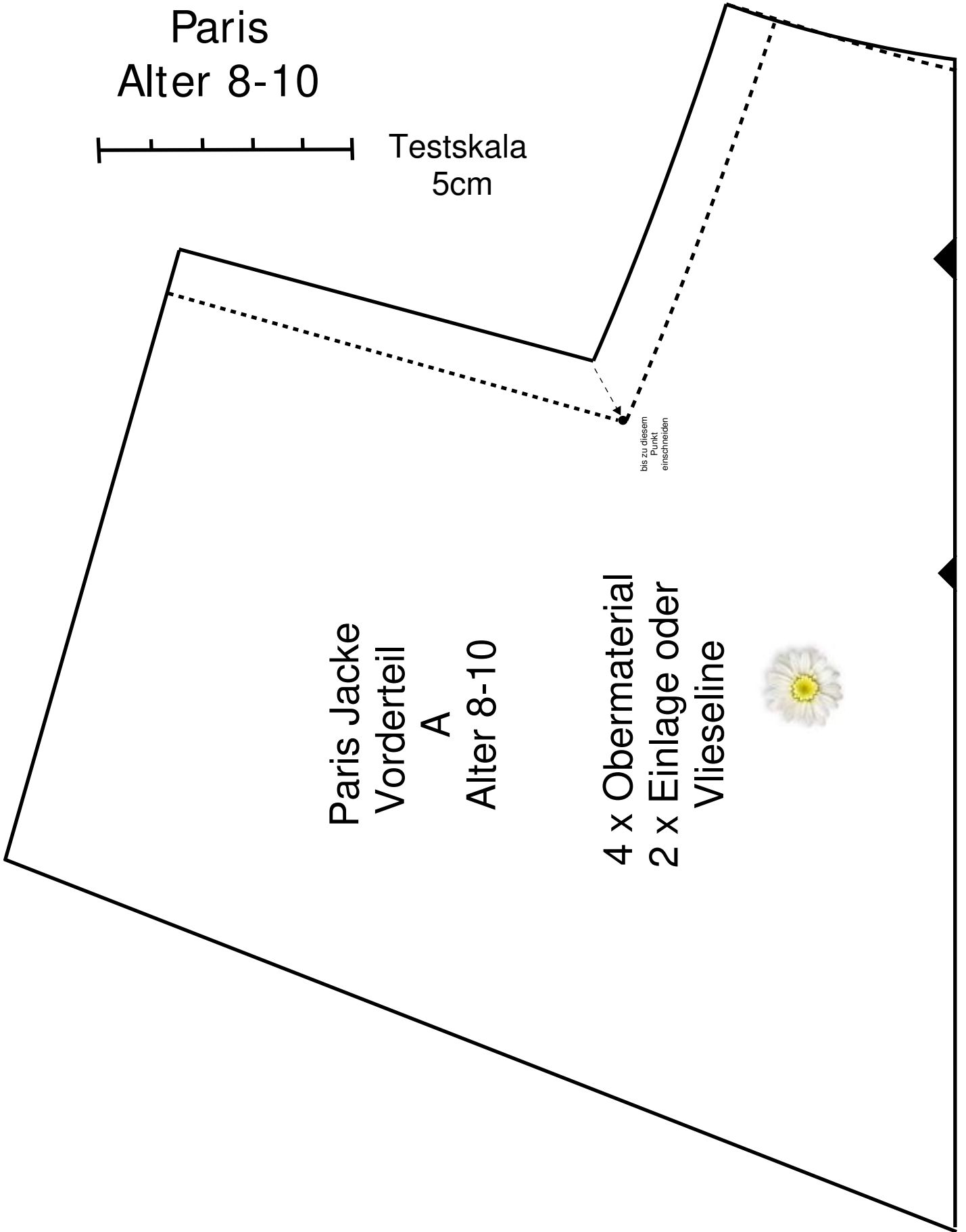


Frocks & Frolics  
Bolero Jacke  
Paris  
Alter 8-10



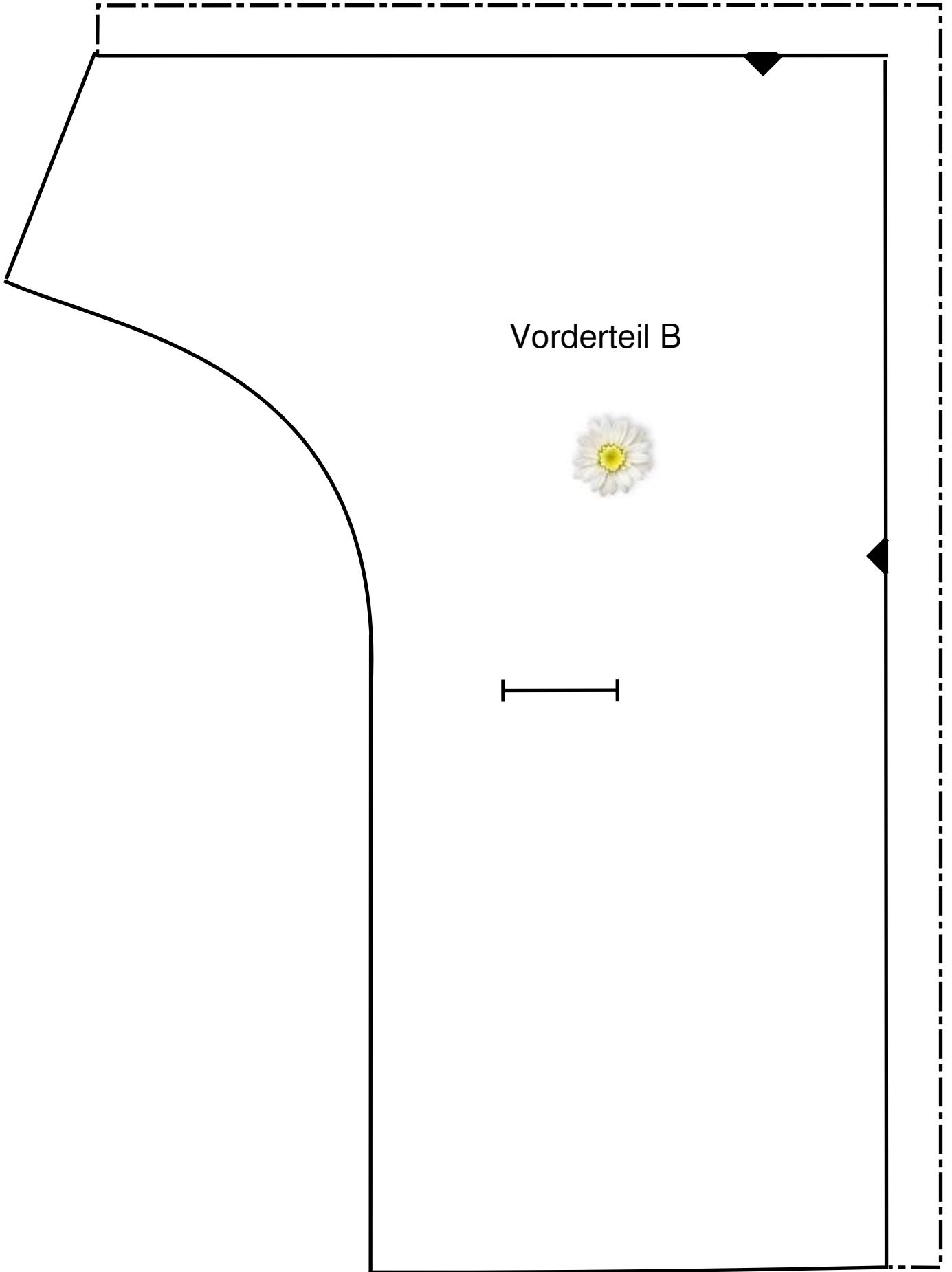
Testskala  
5cm



Paris Jacke  
Vorderteil  
A  
Alter 8-10

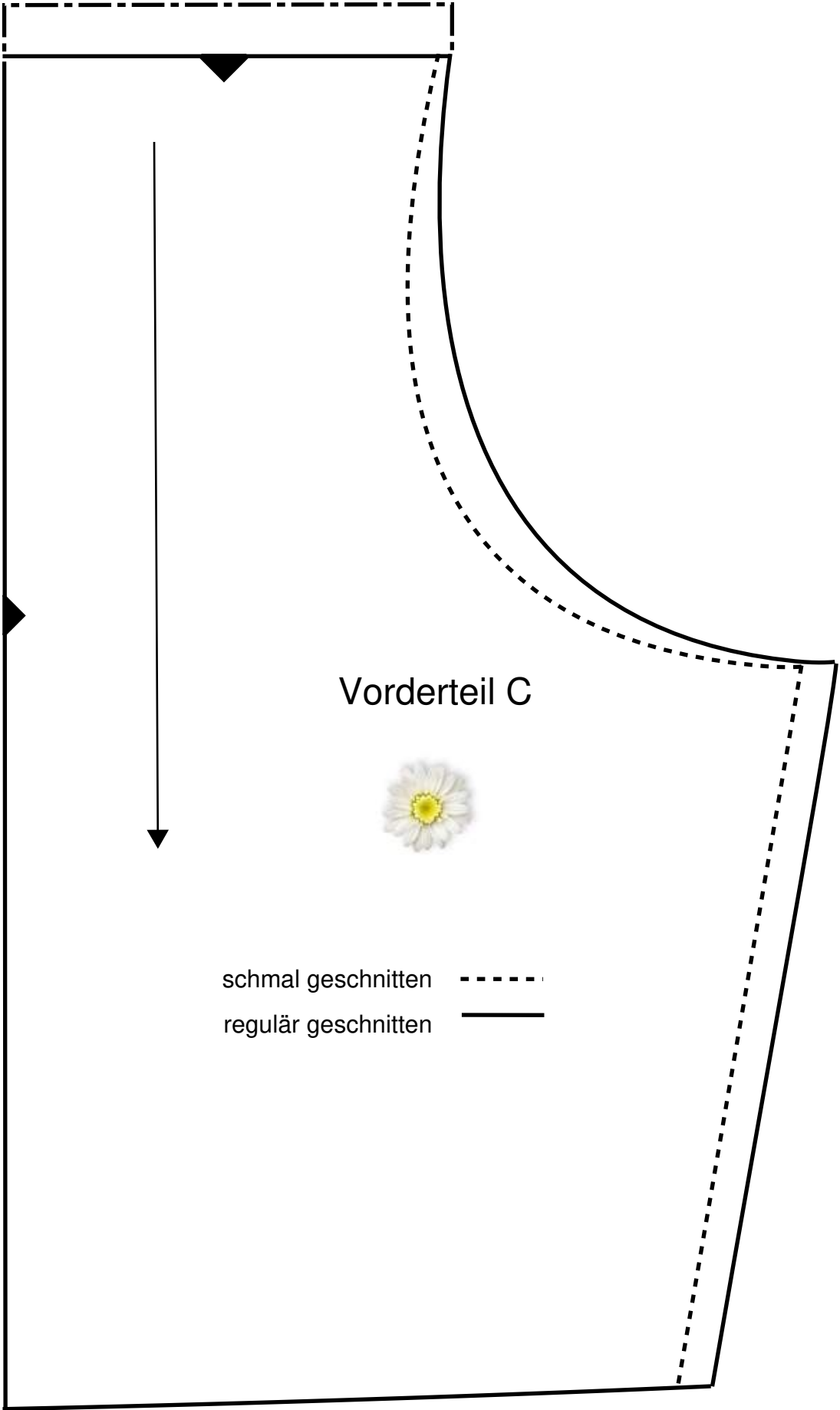
4 x Obermaterial  
2 x Einlage oder  
Vlieseline





Vorderteil B





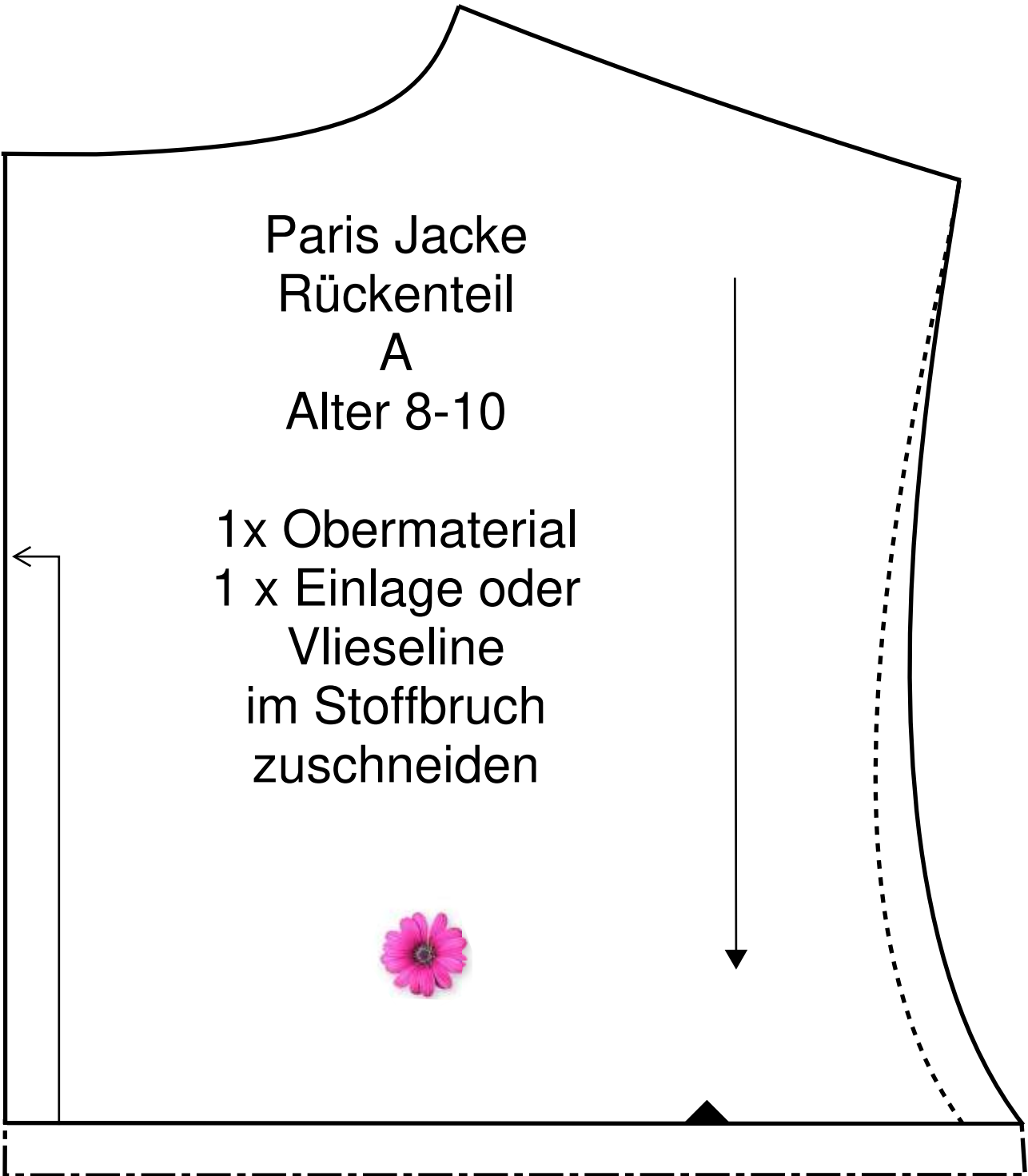
Vorderteil C



schmal geschnitten - - - - -  
regulär geschnitten ———

Paris Jacke  
Rückenteil  
A  
Alter 8-10

1x Obermaterial  
1 x Einlage oder  
Vlieseline  
im Stoffbruch  
zuschneiden

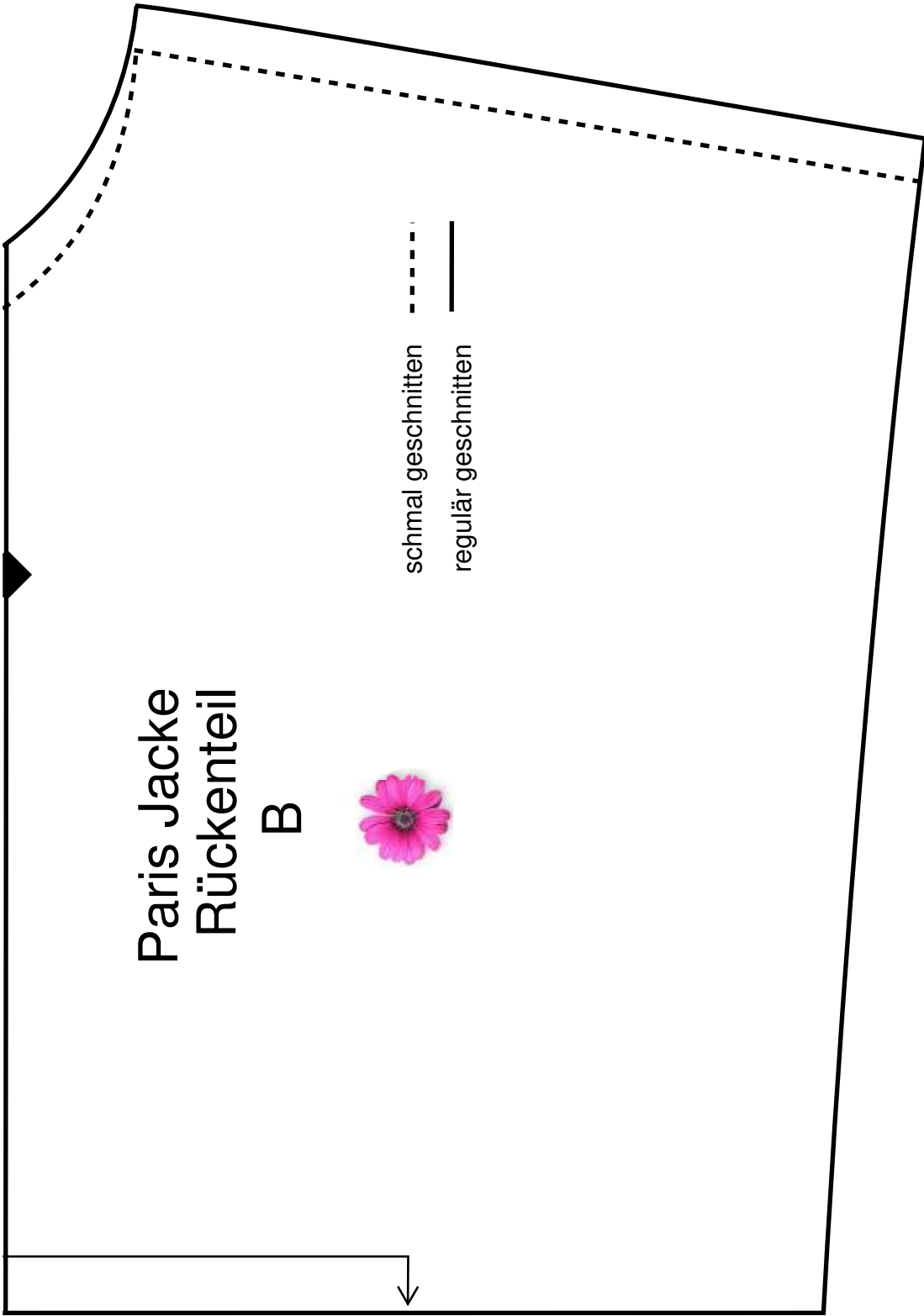


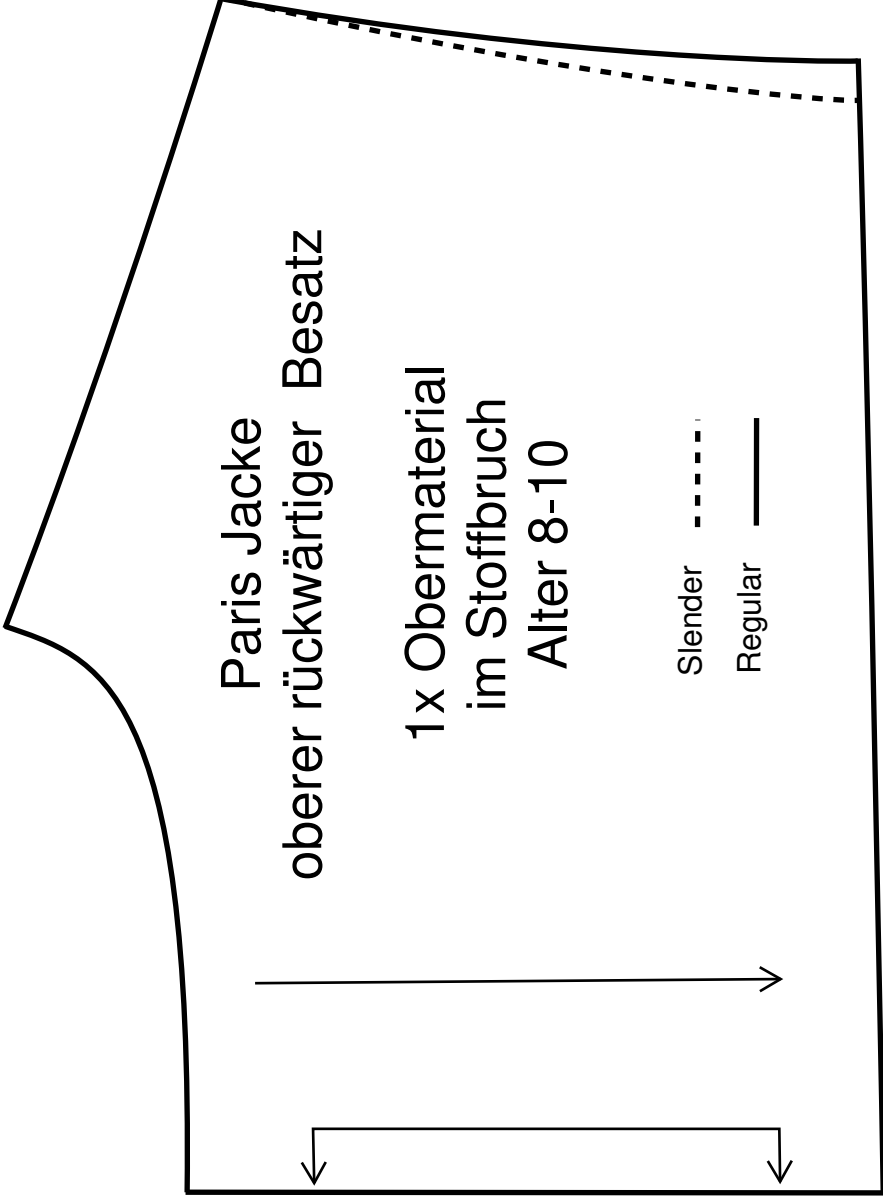
# Paris Jacke Rückenteil

B

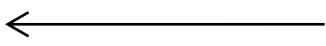


schmal geschnitten  
regulär geschnitten

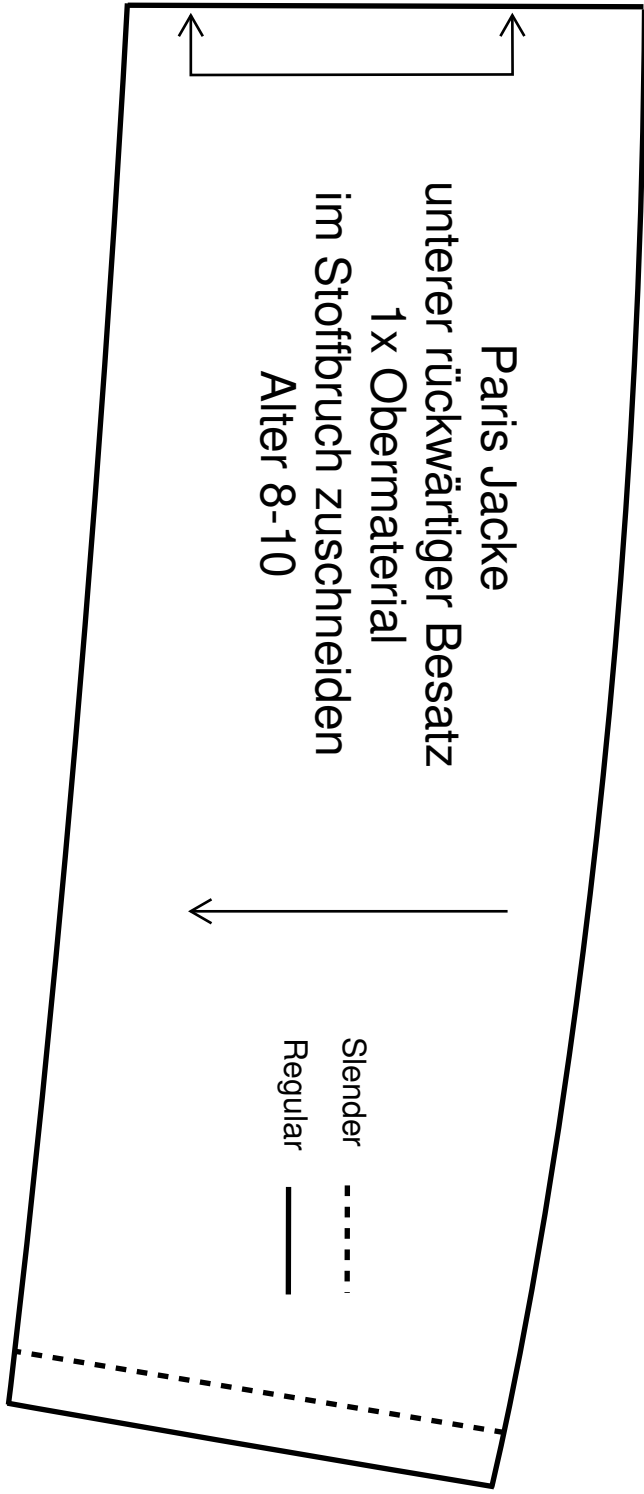




Paris Jacke  
unterer rückwärtiger Besatz  
1x Obermaterial  
im Stoffbruch zuschneiden  
Alter 8-10



Slender - - - - -  
Regular ————

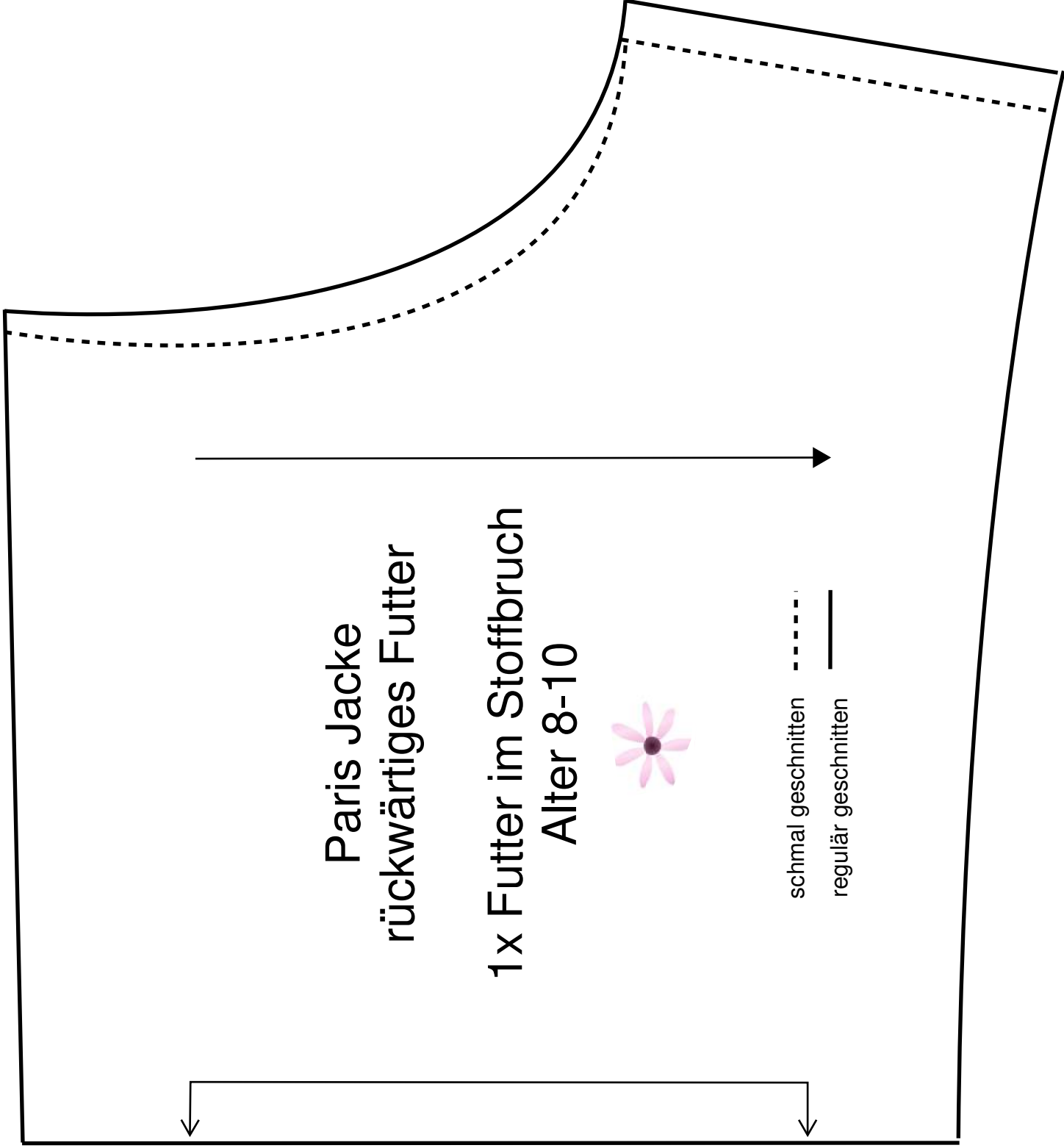


Paris Jacke  
rückwärtiges Futter

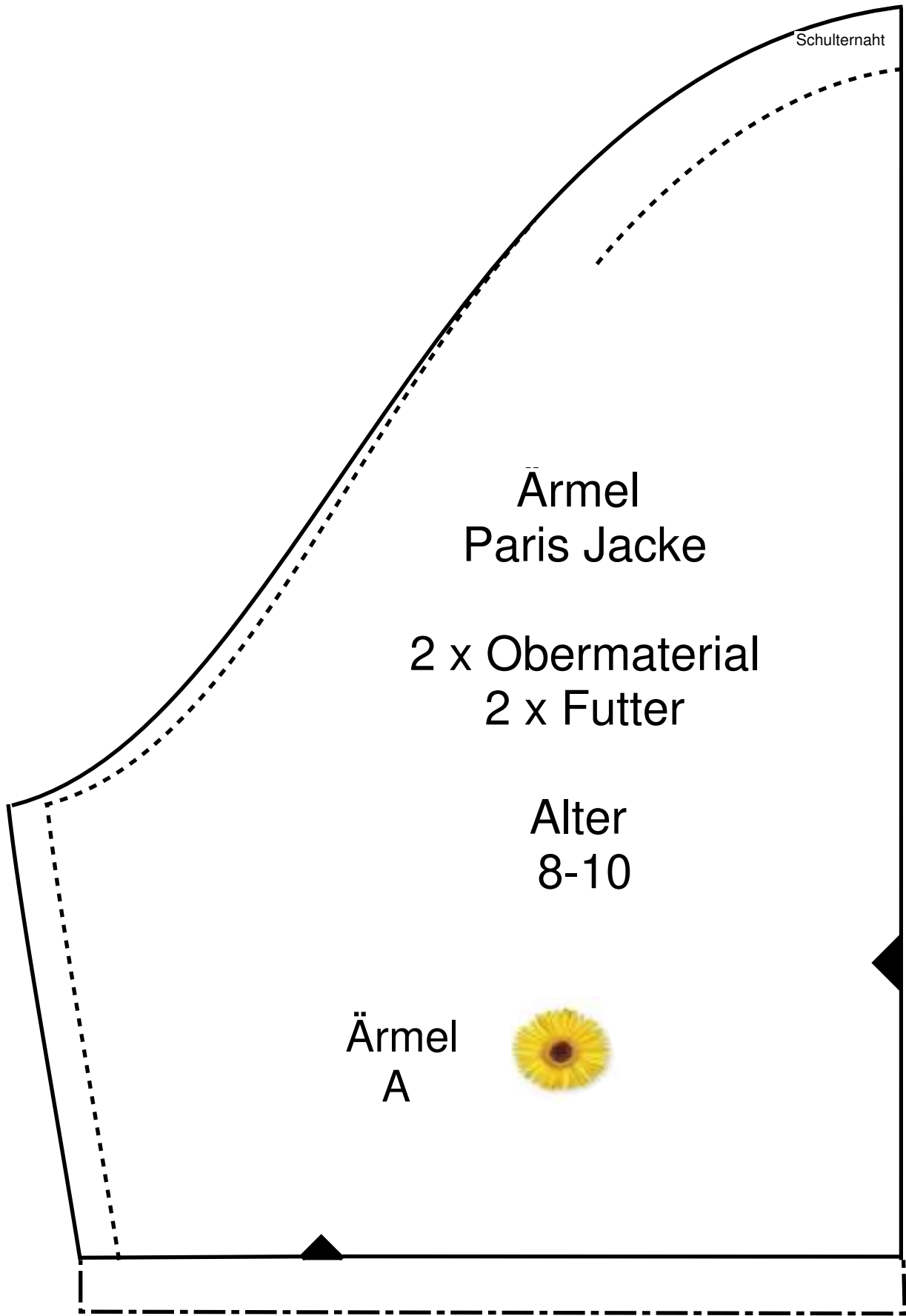
1x Futter im Stoffbruch  
Alter 8-10



- schmal geschnitten - - - - -
- regulär geschnitten ————







Schulternaht

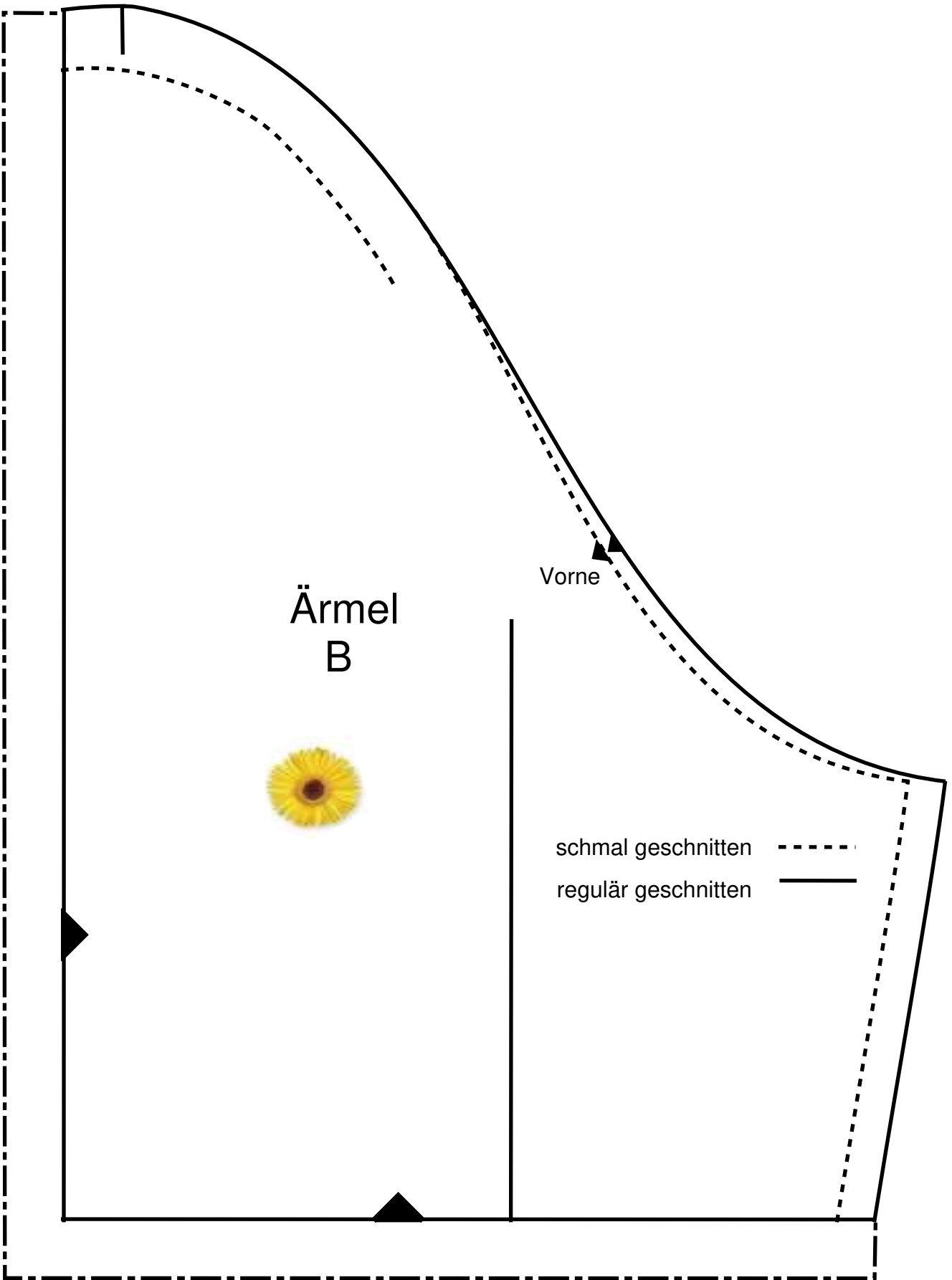
Ärmel  
Paris Jacke

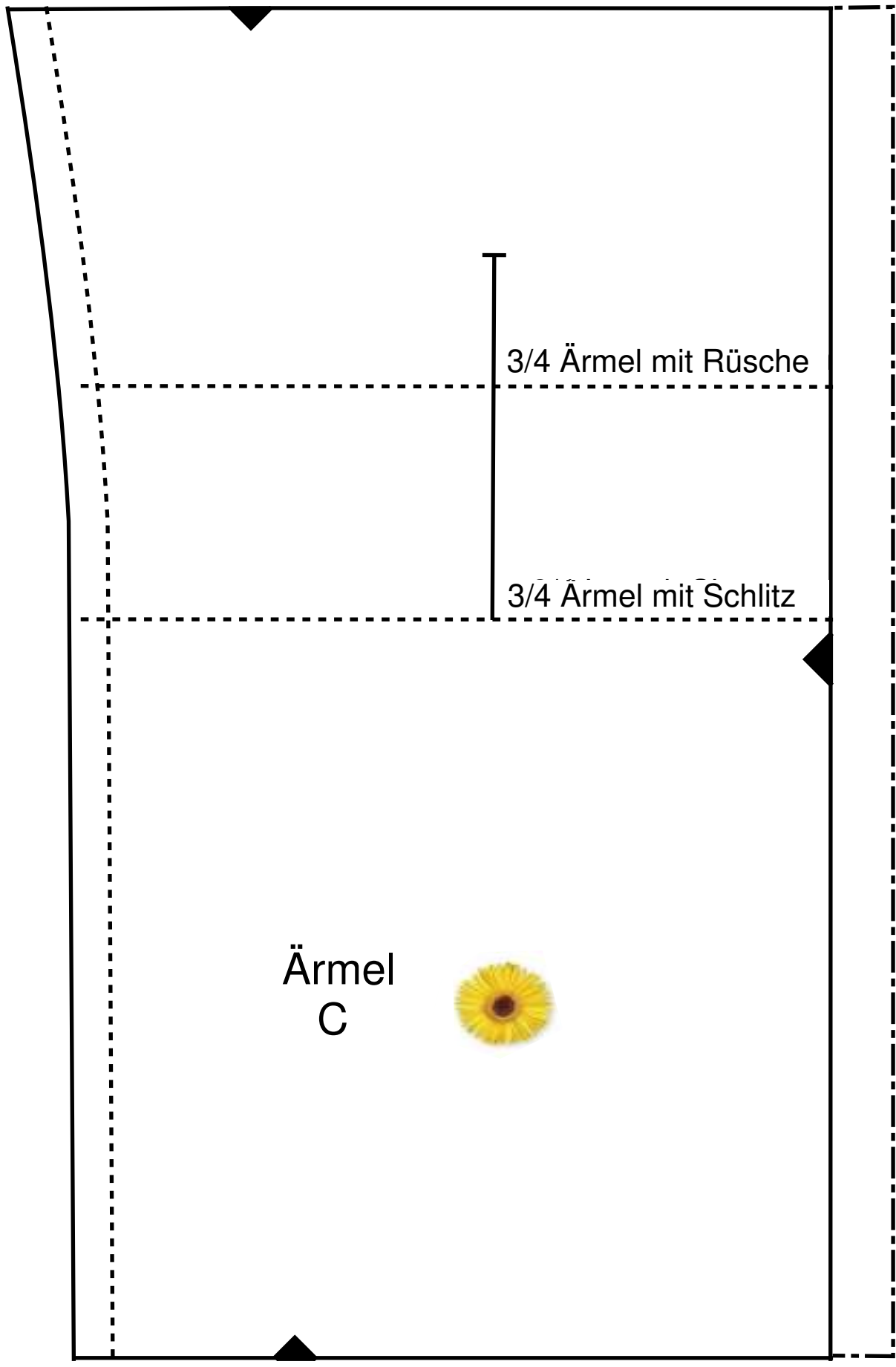
2 x Obermaterial  
2 x Futter

Alter  
8-10

Ärmel  
A





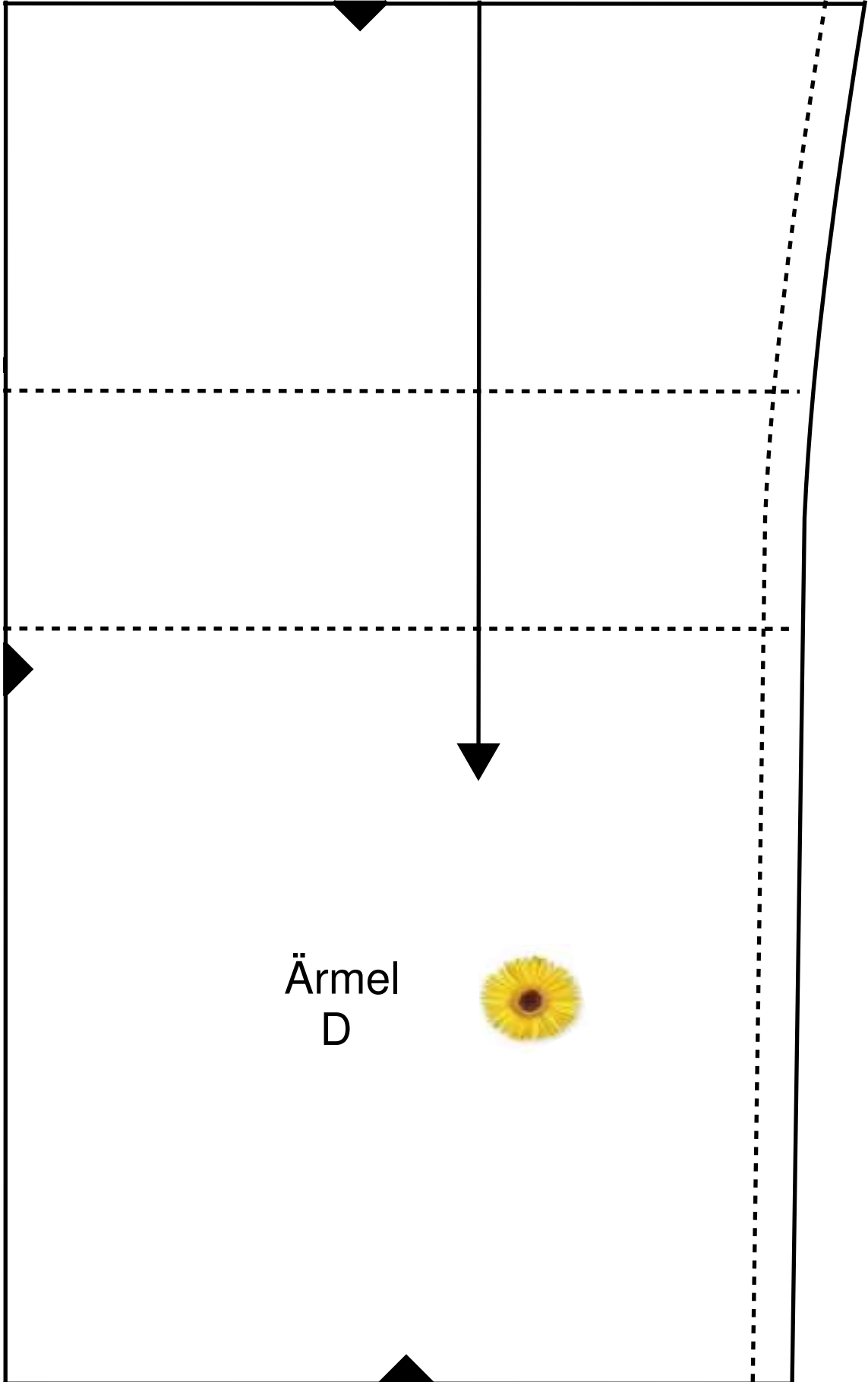


3/4 Ärmel mit Rüsche

3/4 Ärmel mit Schlitz

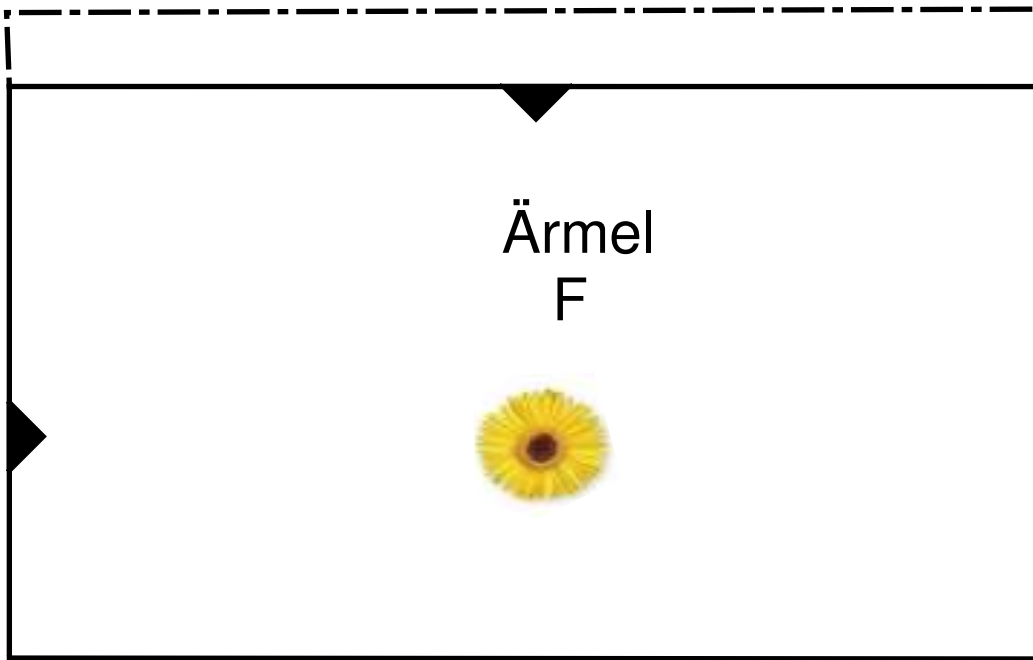
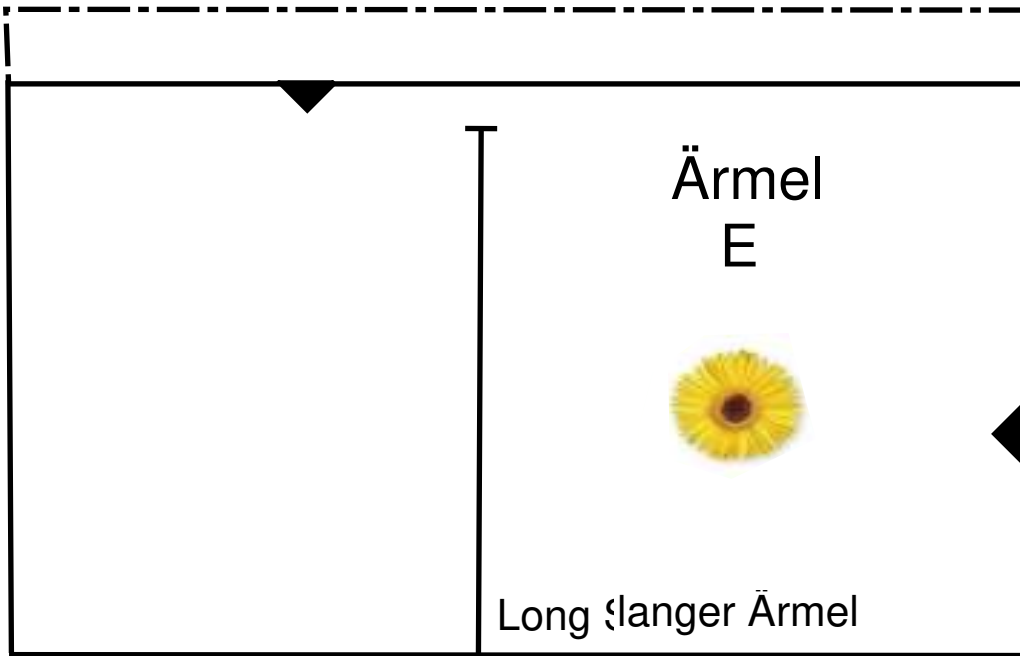
Ärmel  
C





Ärmel  
D

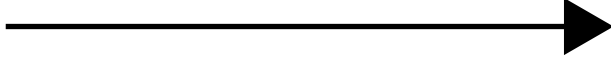




Paris Jacke  
Alter 8-10  
Ärmelrüsche (optional)  
A

2 x Obermaterial

Armelrüsche  
B

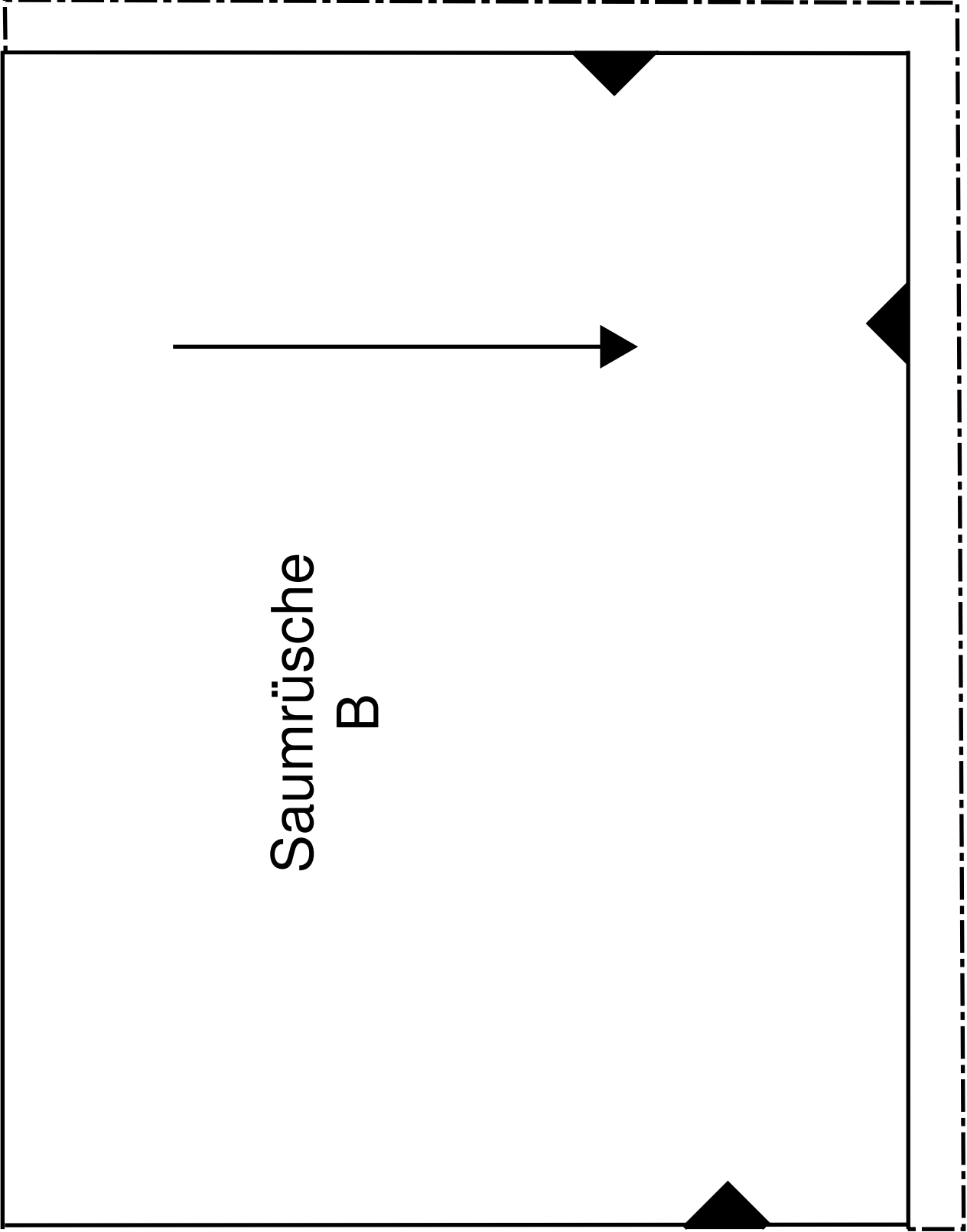


Paris Jacke  
Alter 8-10  
Saumrüsche (Optional)  
A

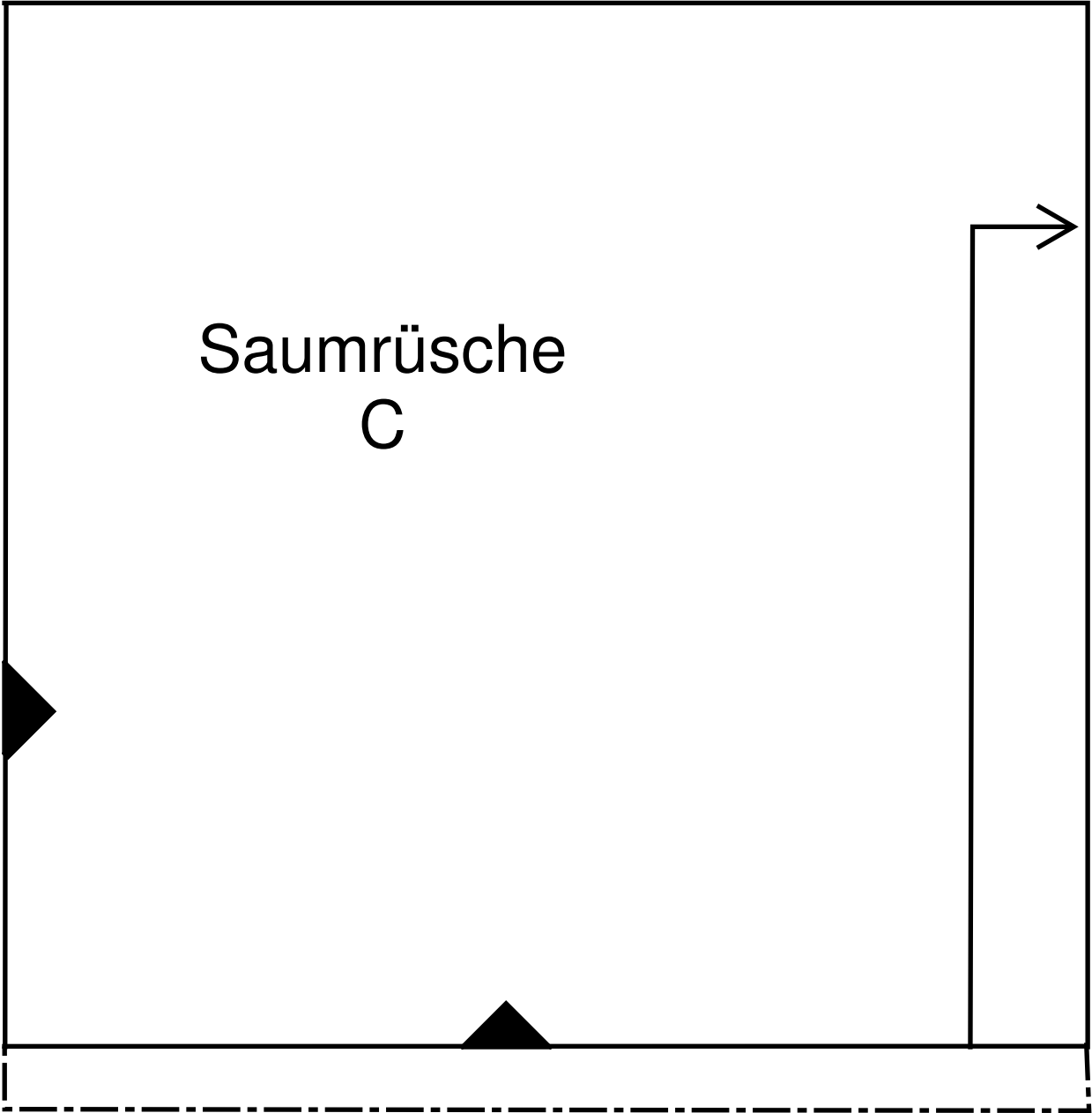
1 x Obermaterial

Falls du ohne dieses Schnittmuster zuschneiden willst:  
Länge 112 cm  
(für dichtere Rüschen bitte 30 cm länger zuschneiden)  
Breite 30 cm



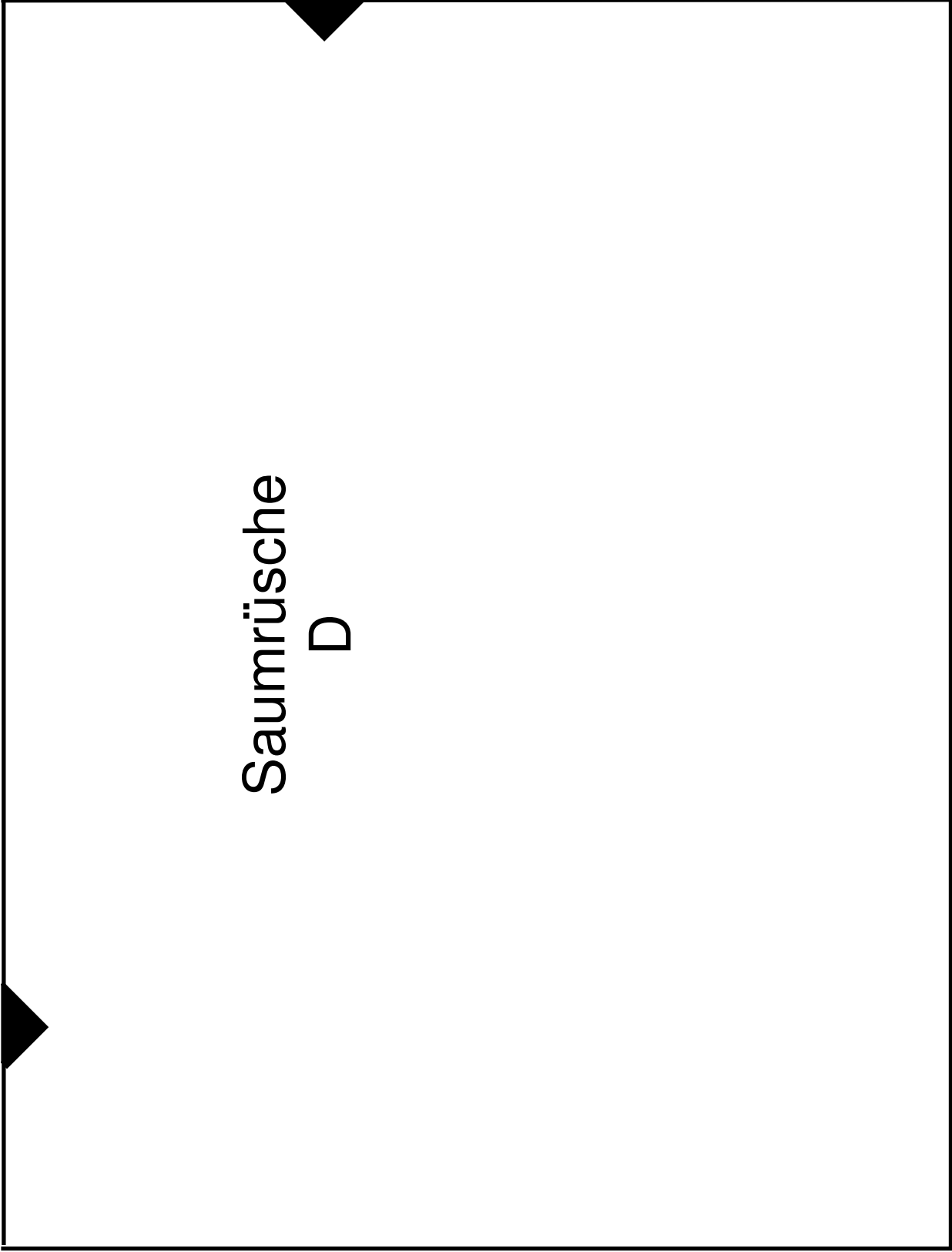


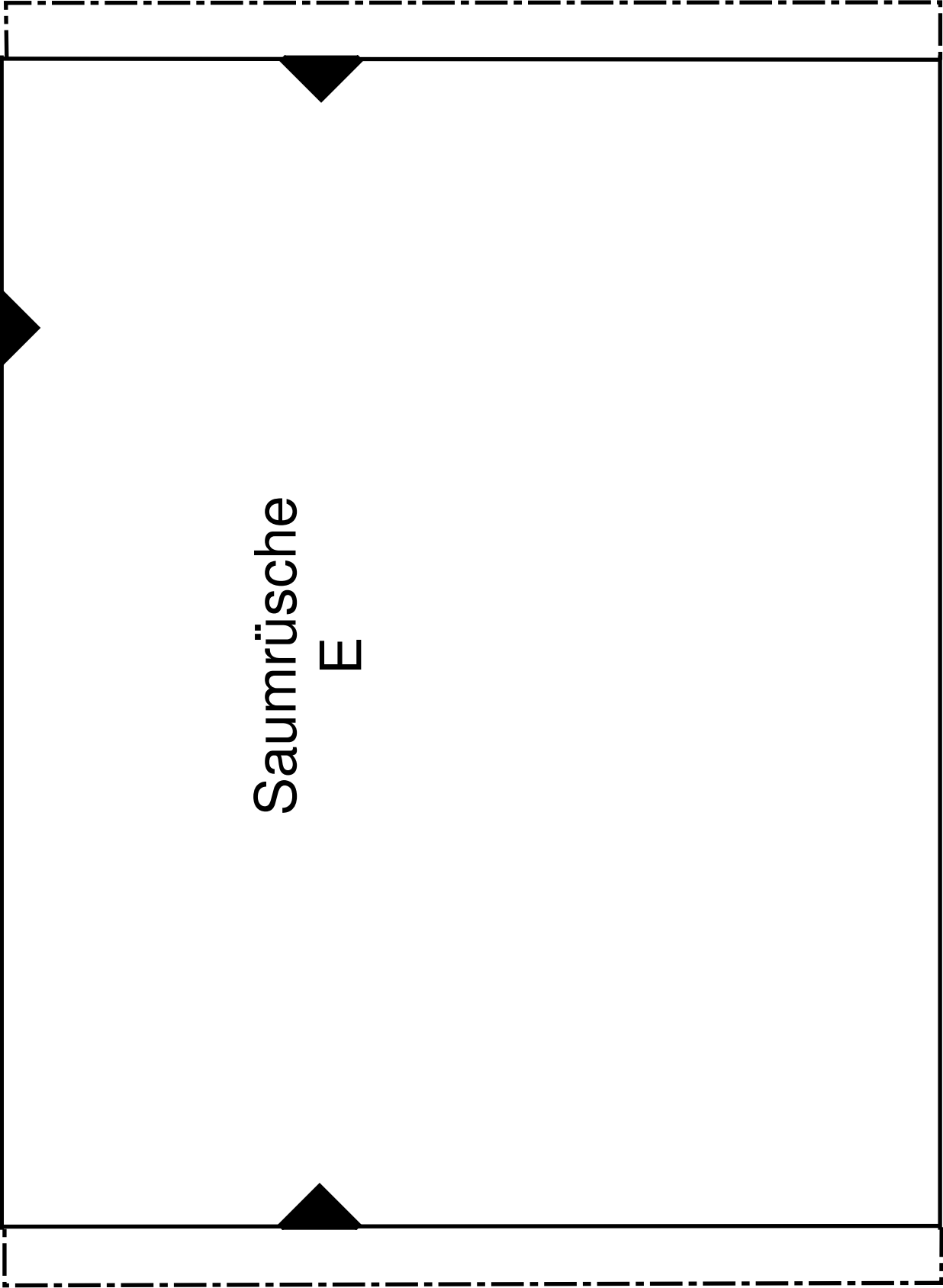
Saumrüsche  
B



Saumrüsche  
C

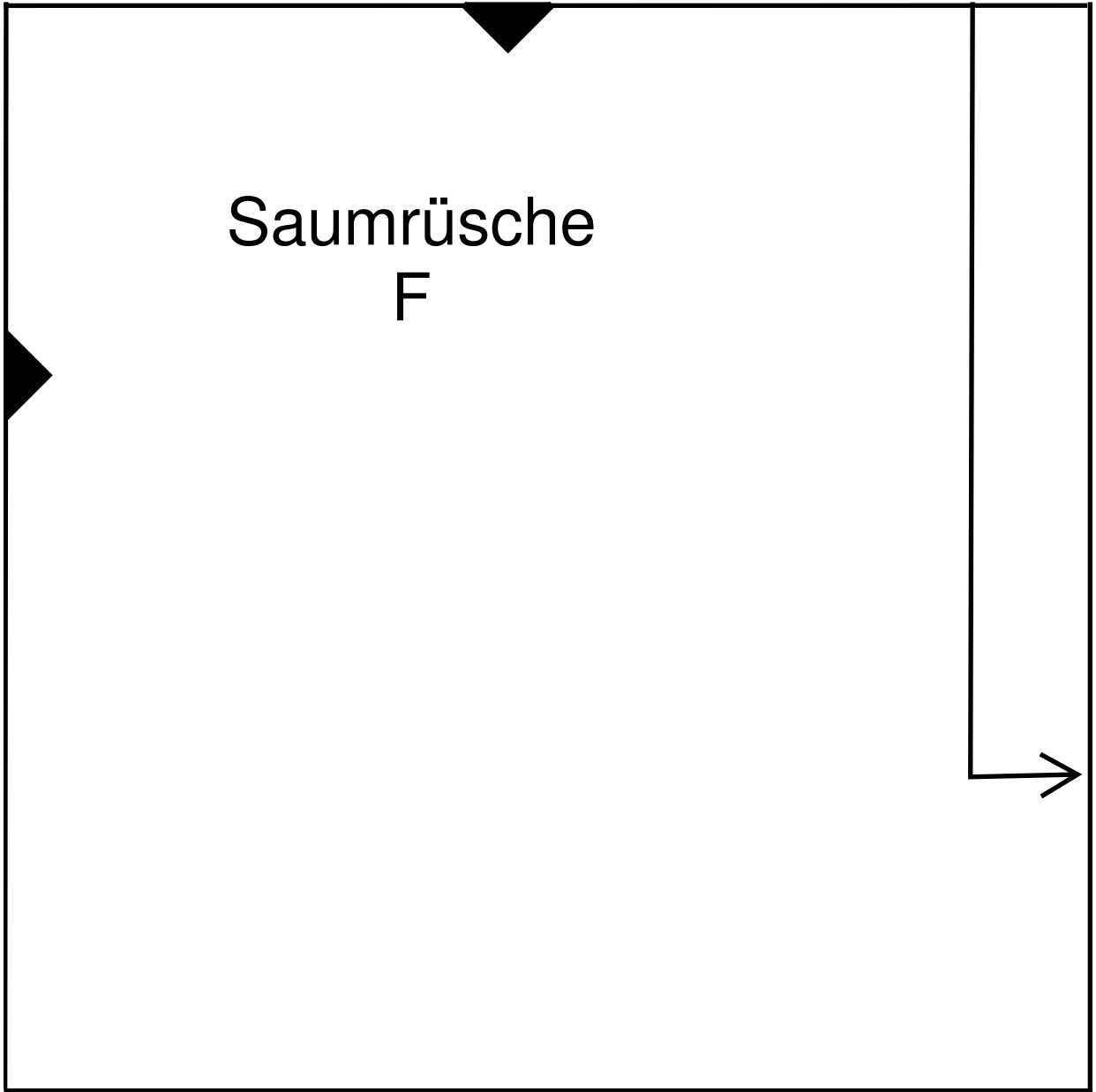
Saumrüsche  
D





Saumrüsche  
E

Saumrüsche  
F



# Wie man das Schnittmuster zusammensetzt

