

Frocks & Frolics

Paris Jacket

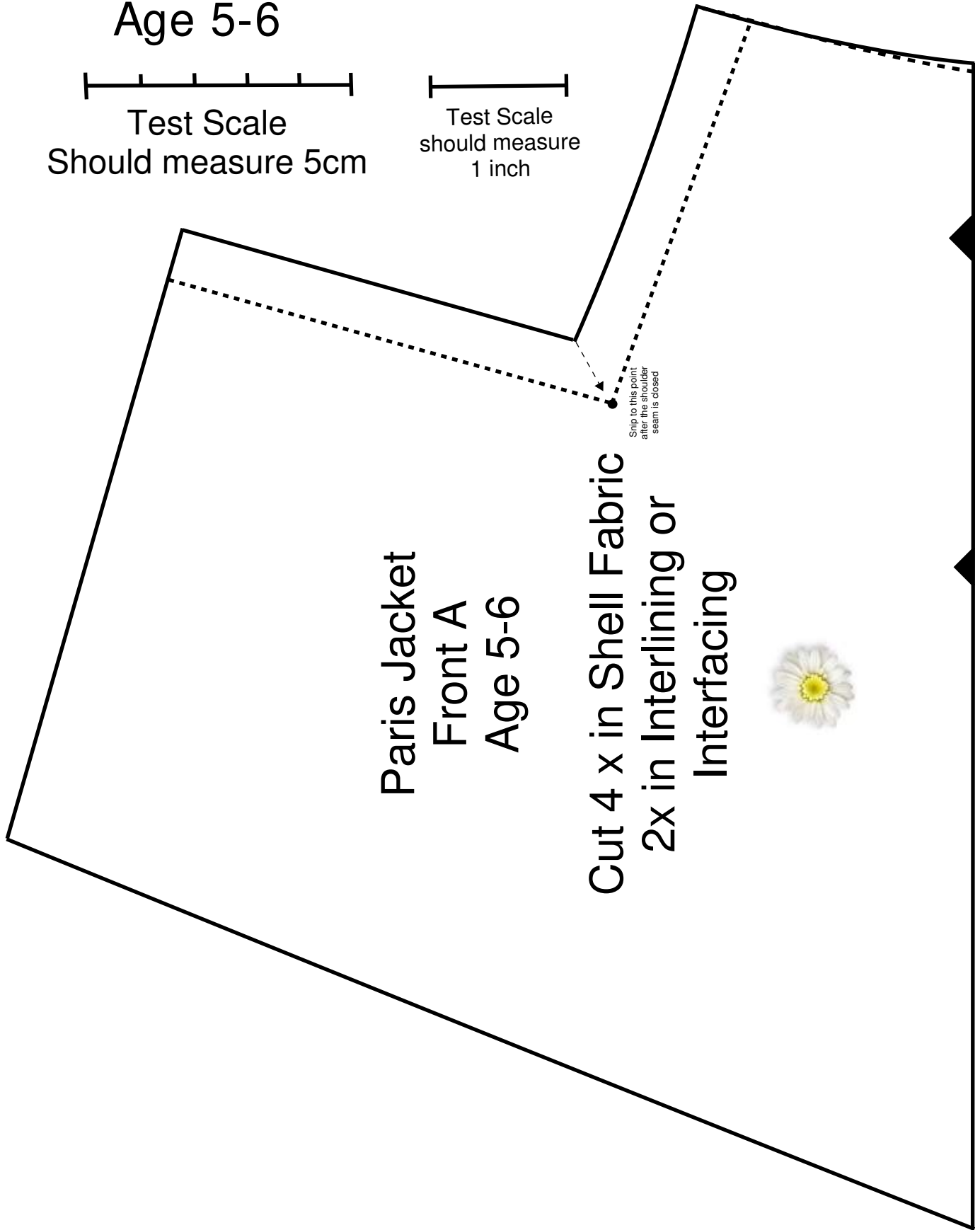
Age 5-6



Test Scale
Should measure 5cm



Test Scale
should measure
1 inch

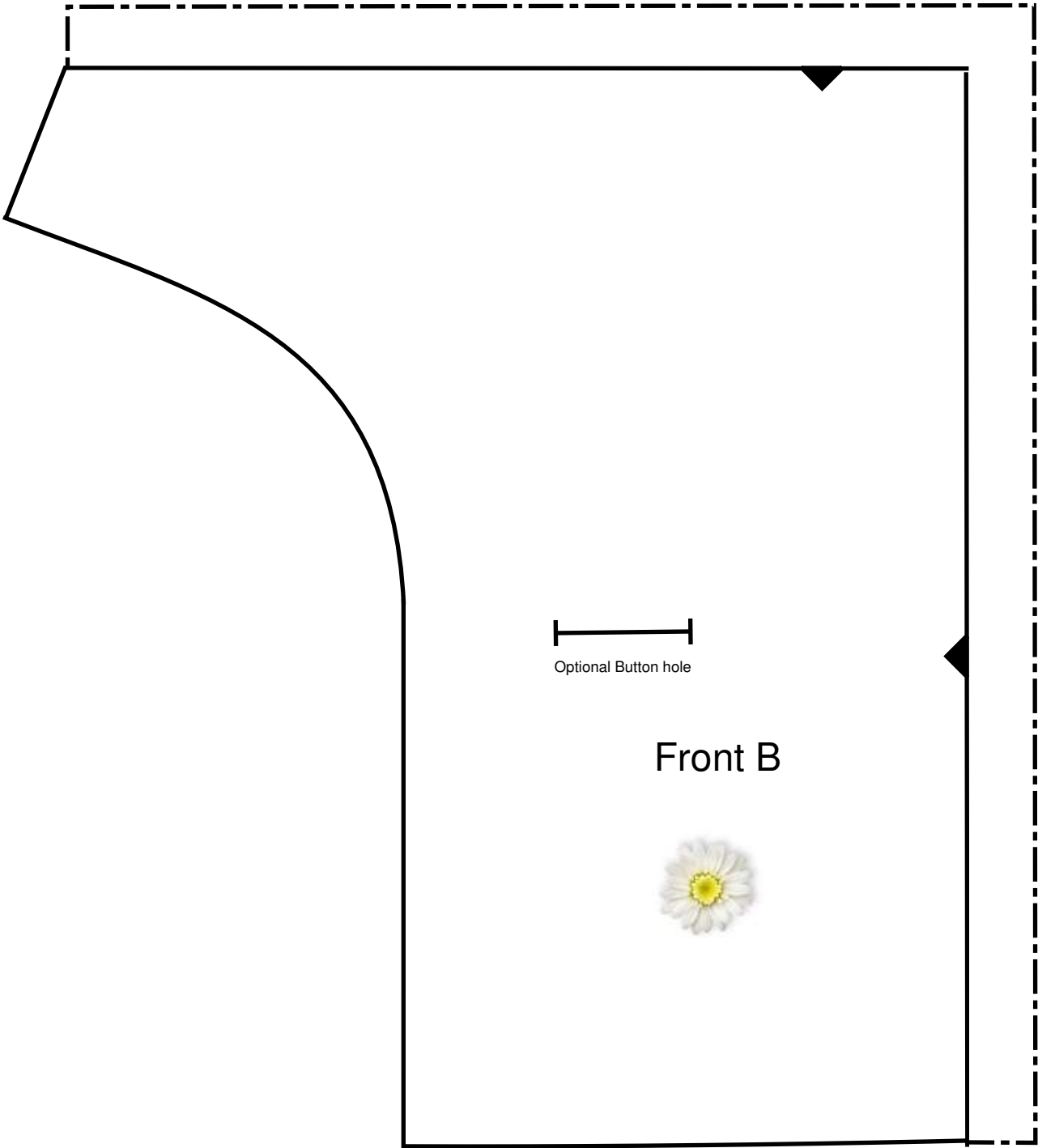


Paris Jacket
Front A
Age 5-6

Cut 4 x in Shell Fabric
2x in Interlining or
Interfacing

Snip to this point
after the shoulder
seam is closed

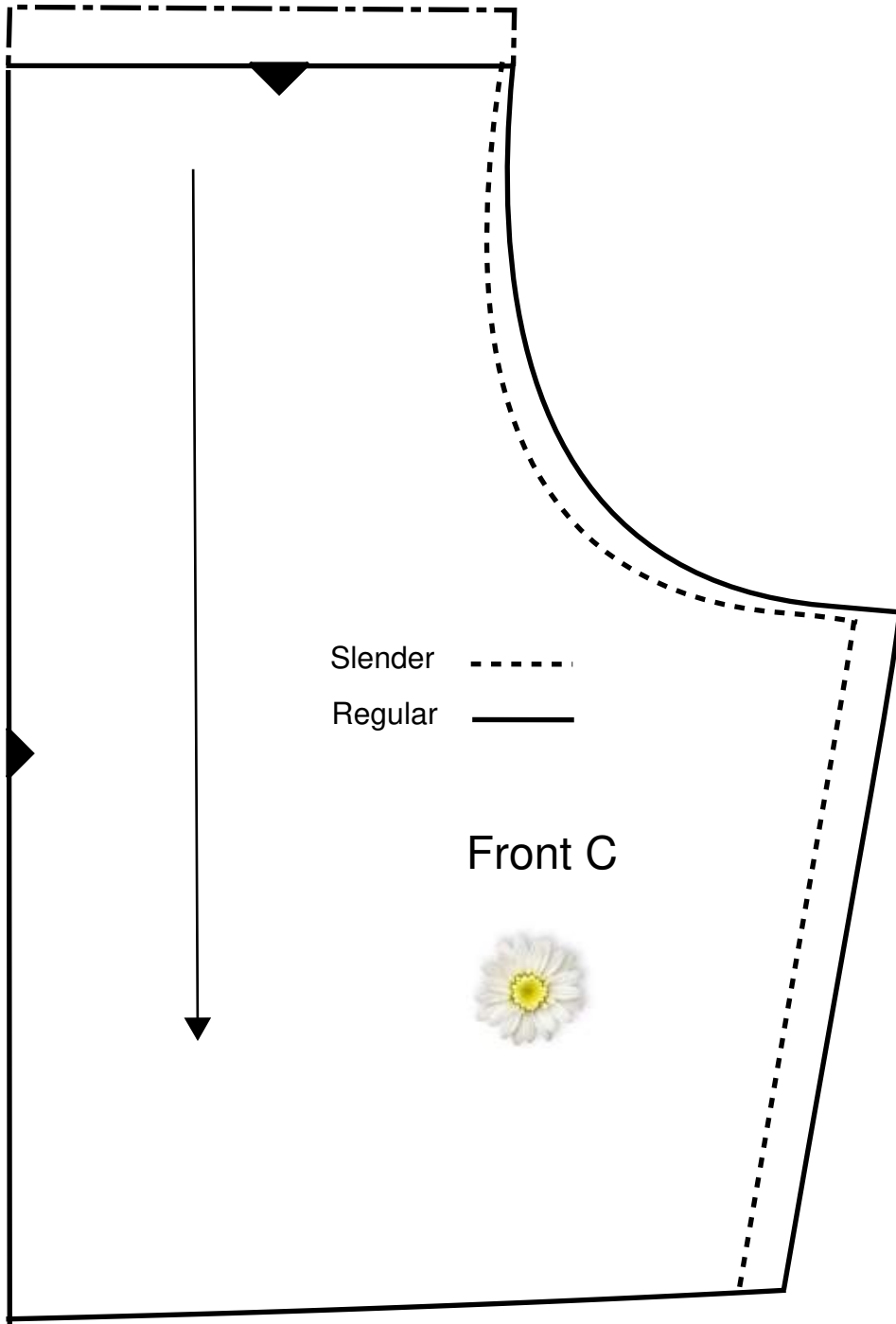




Optional Button hole

Front B

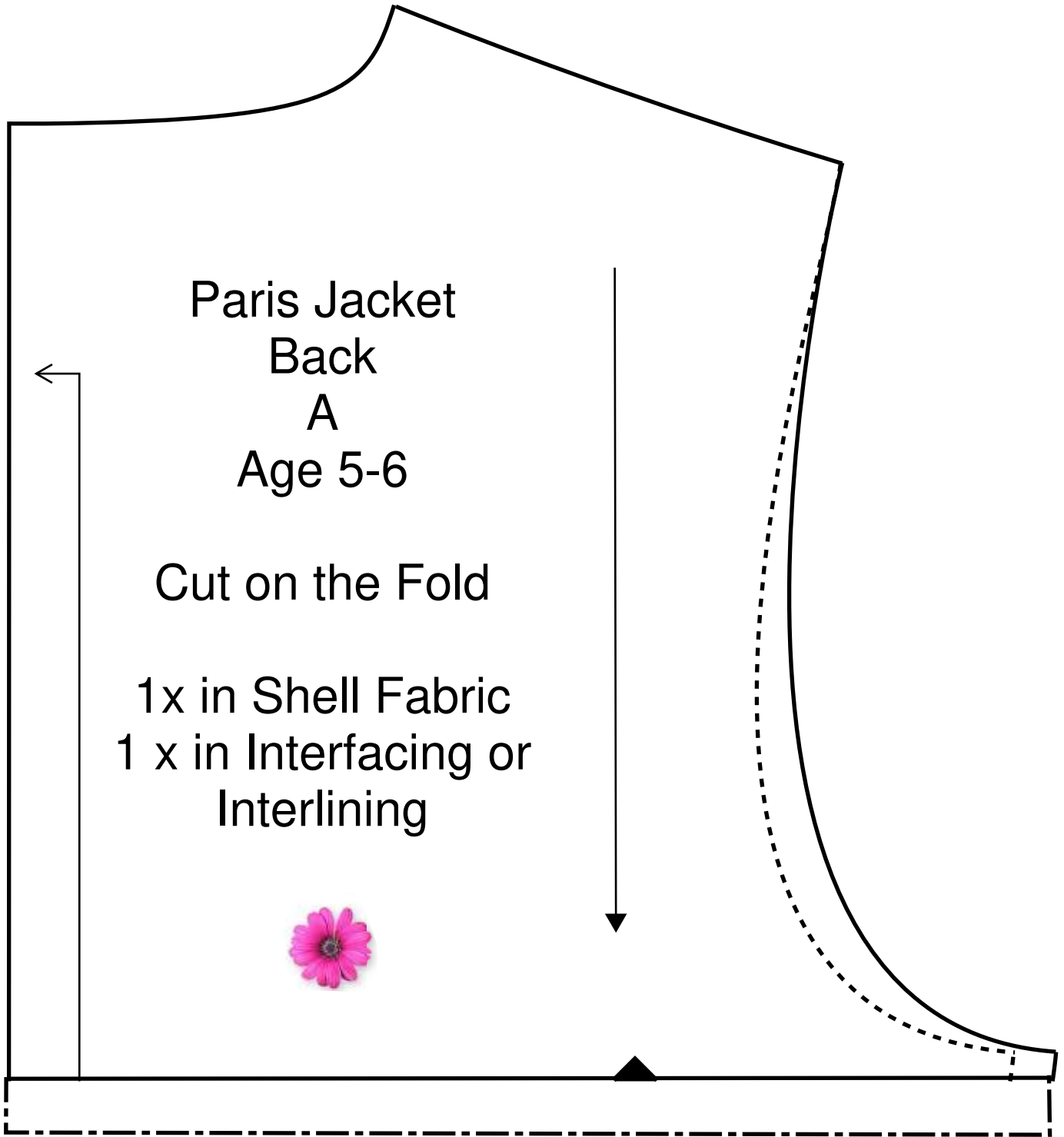


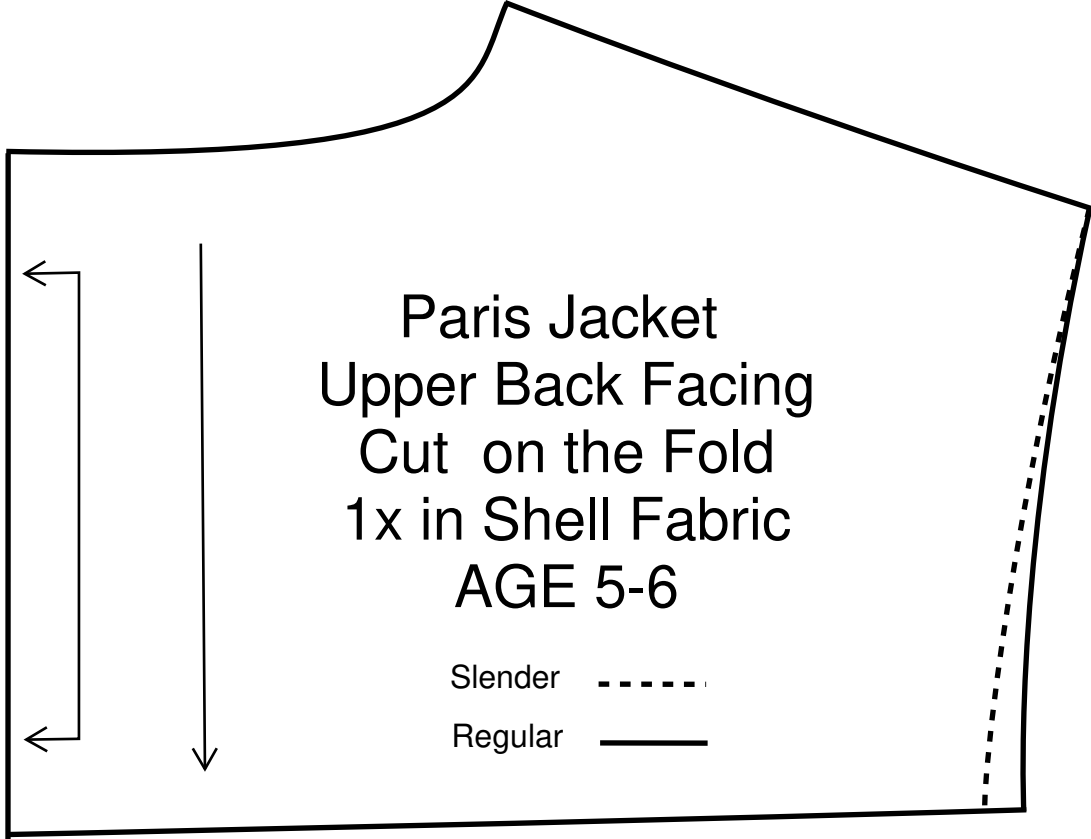
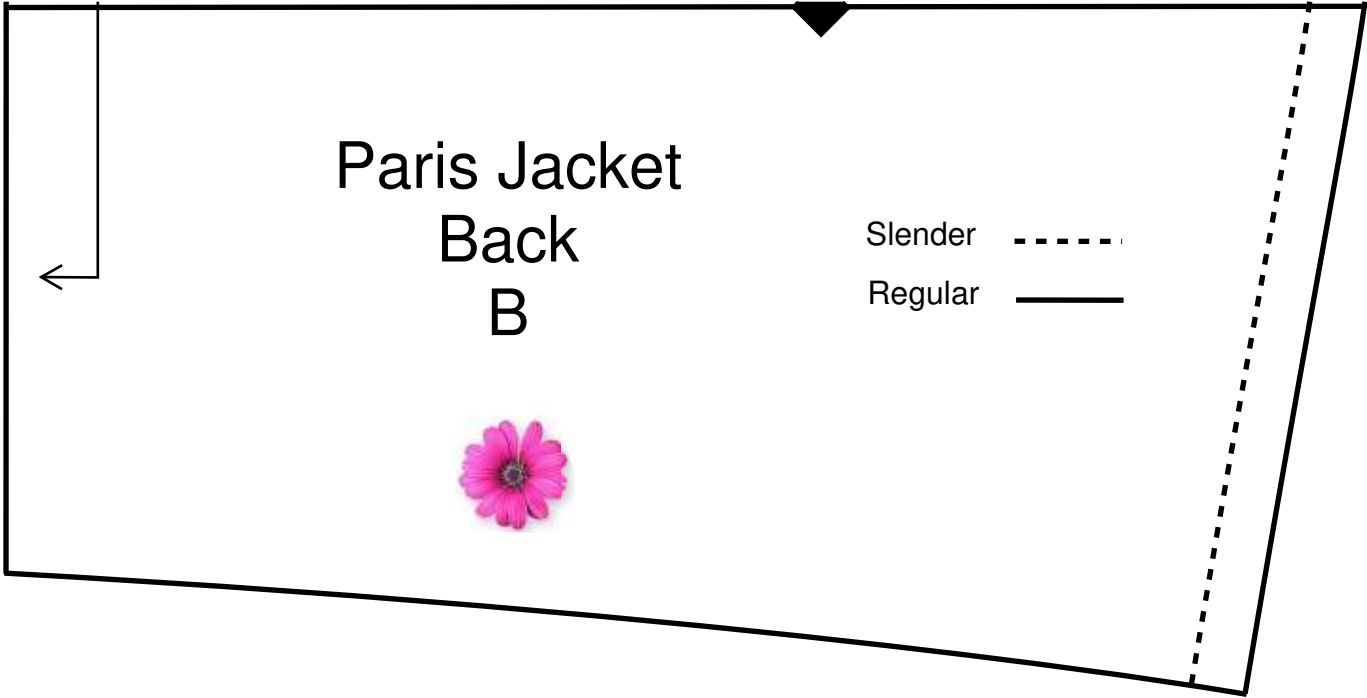


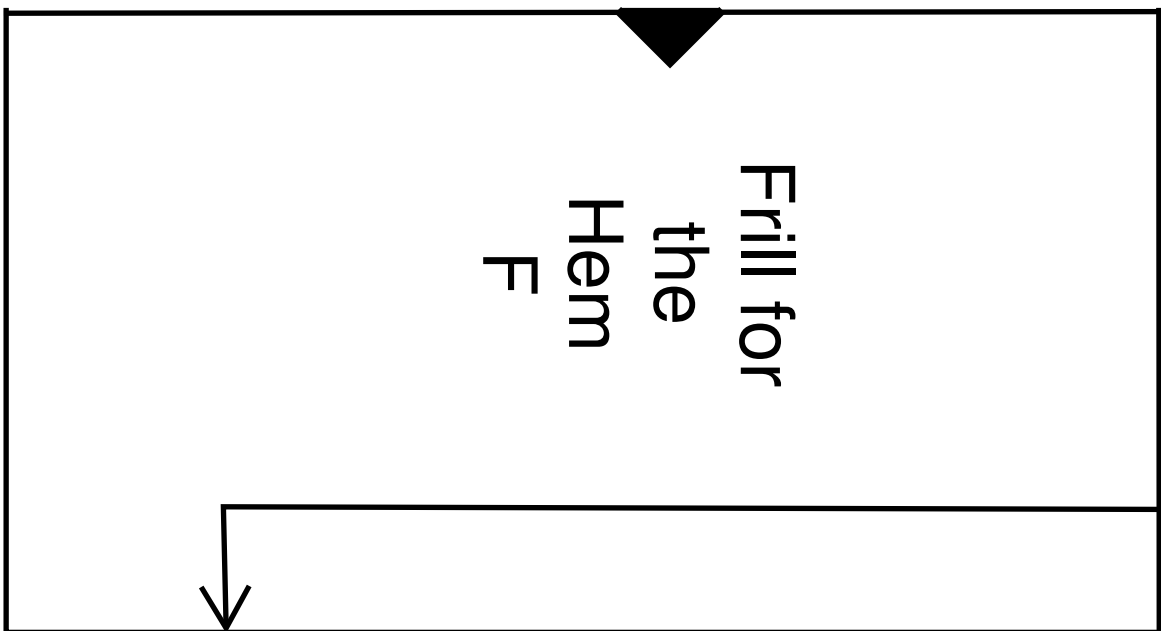
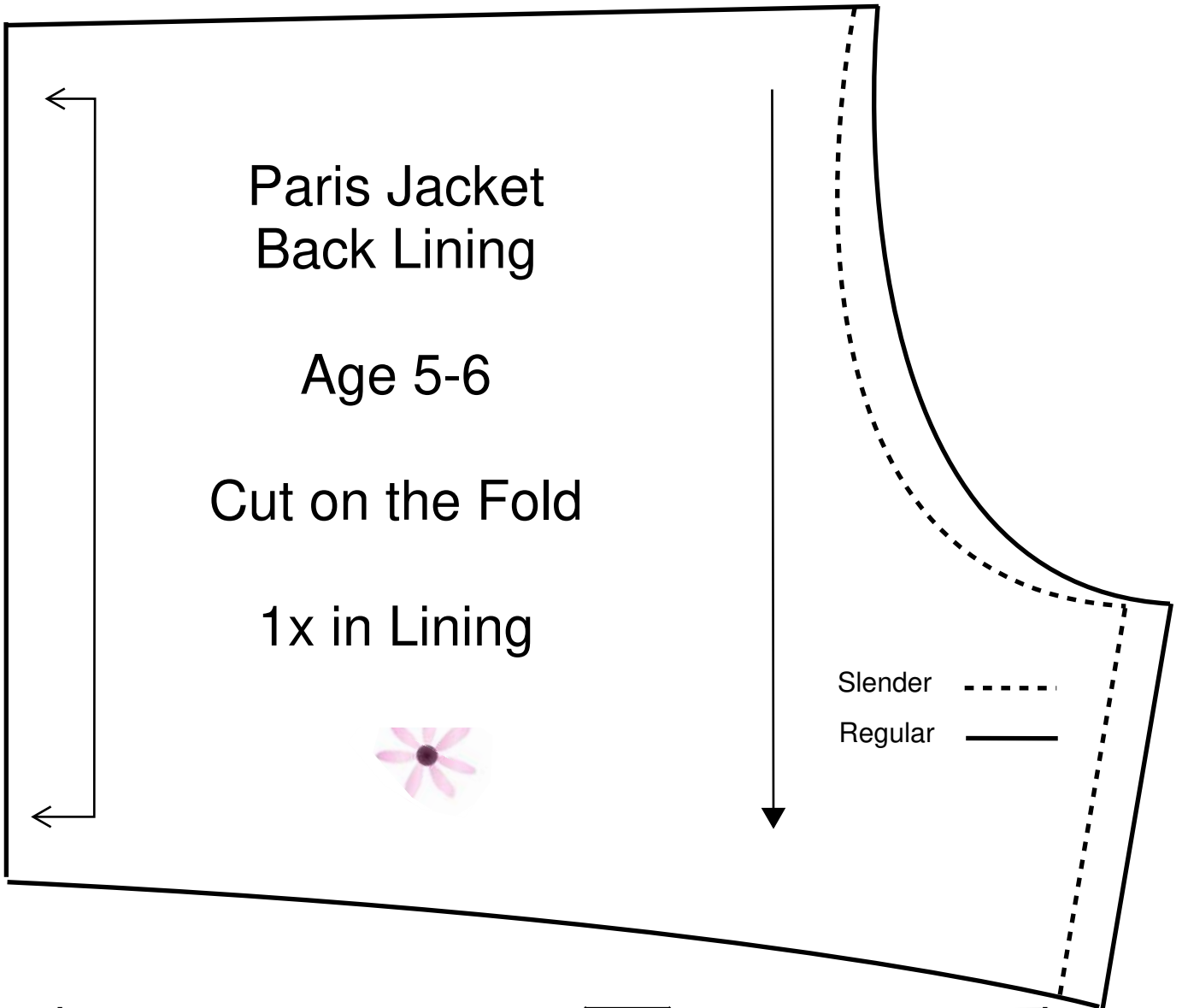
Paris Jacket
Back
A
Age 5-6

Cut on the Fold

1x in Shell Fabric
1 x in Interfacing or
Interlining







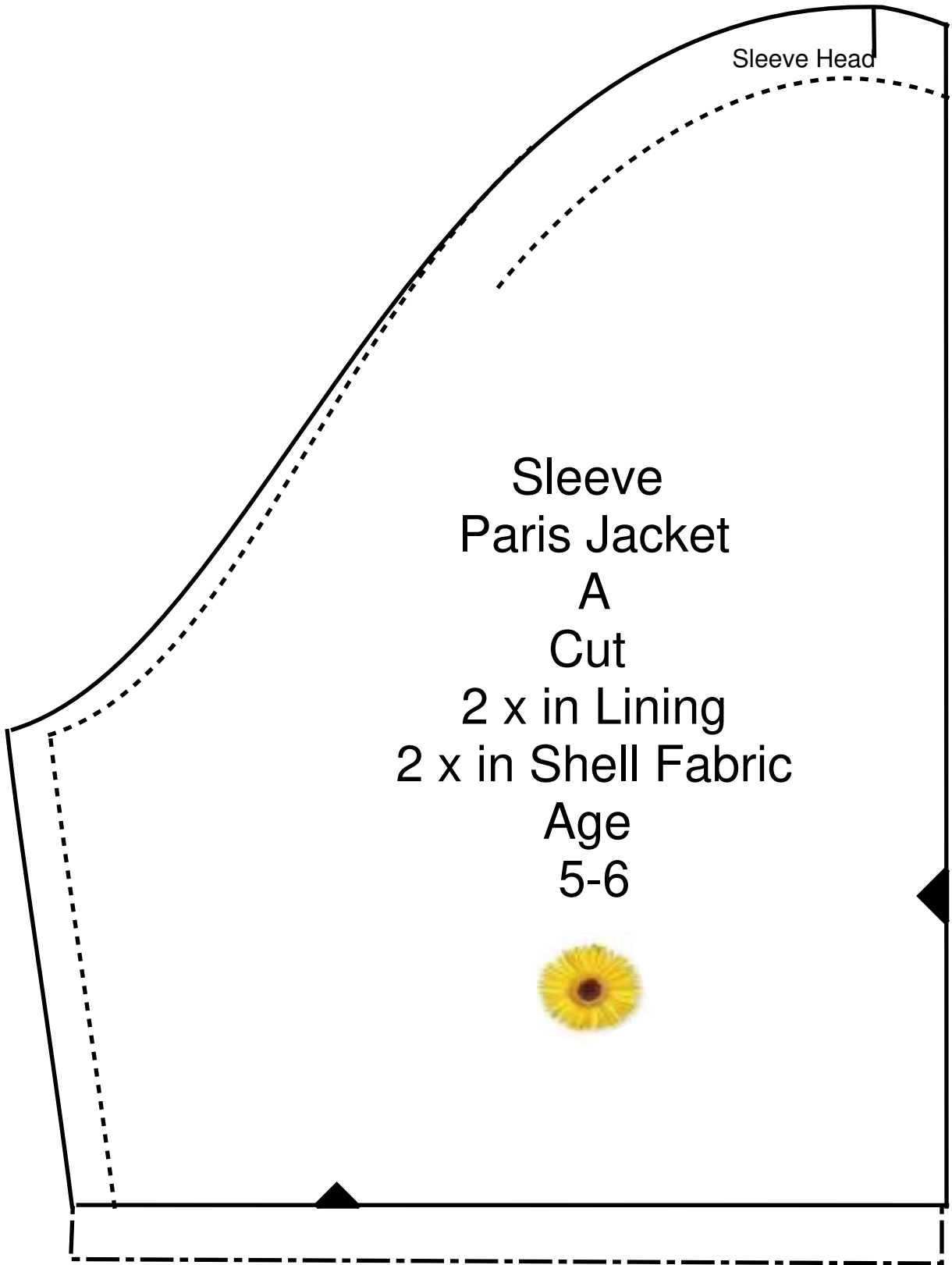
Paris Jacket
Lower Back Facing
Cut on the Fold
1x in Shell Fabric
AGE 5-6

Slender
Regular —

Sleeve
E



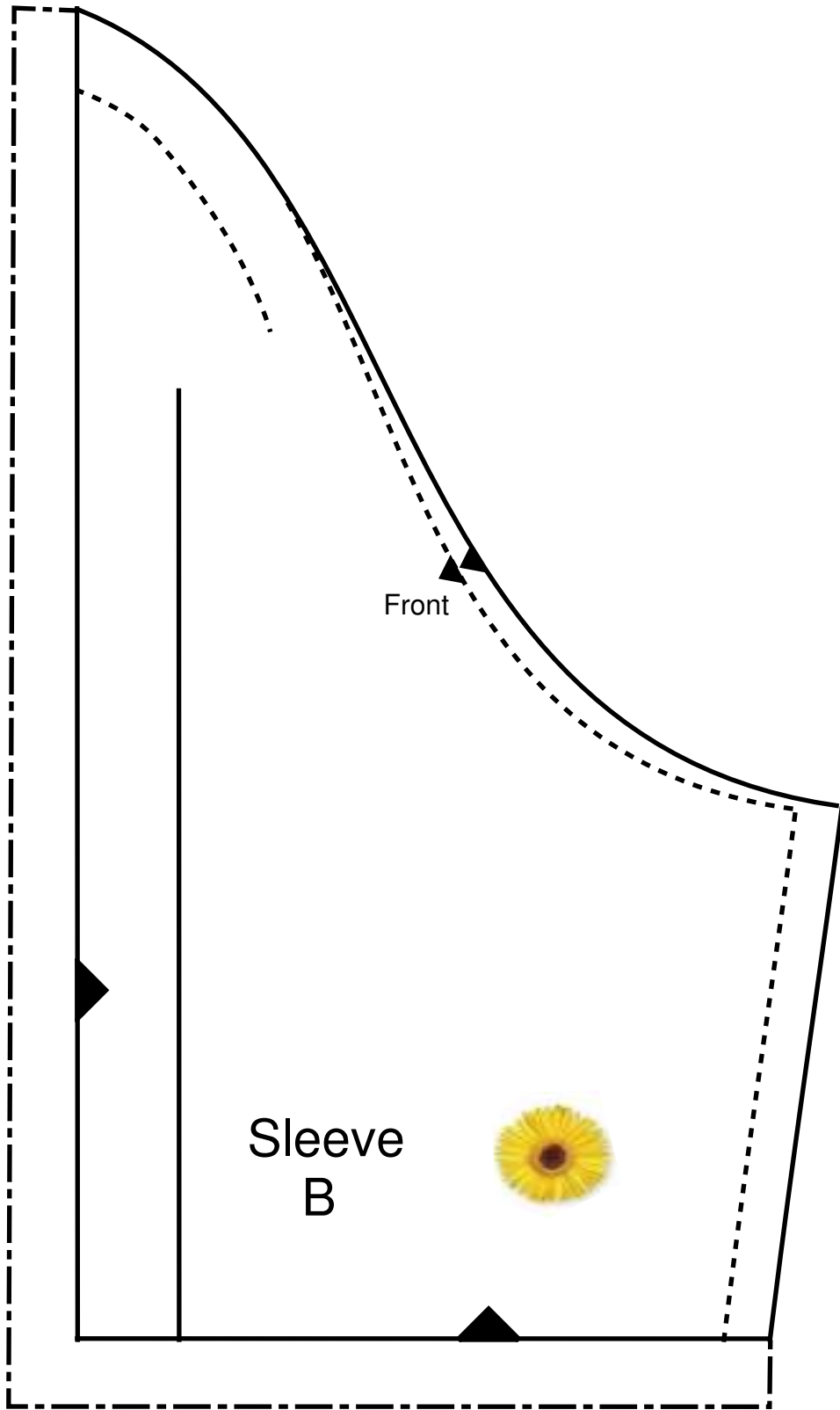
Long Sleeve

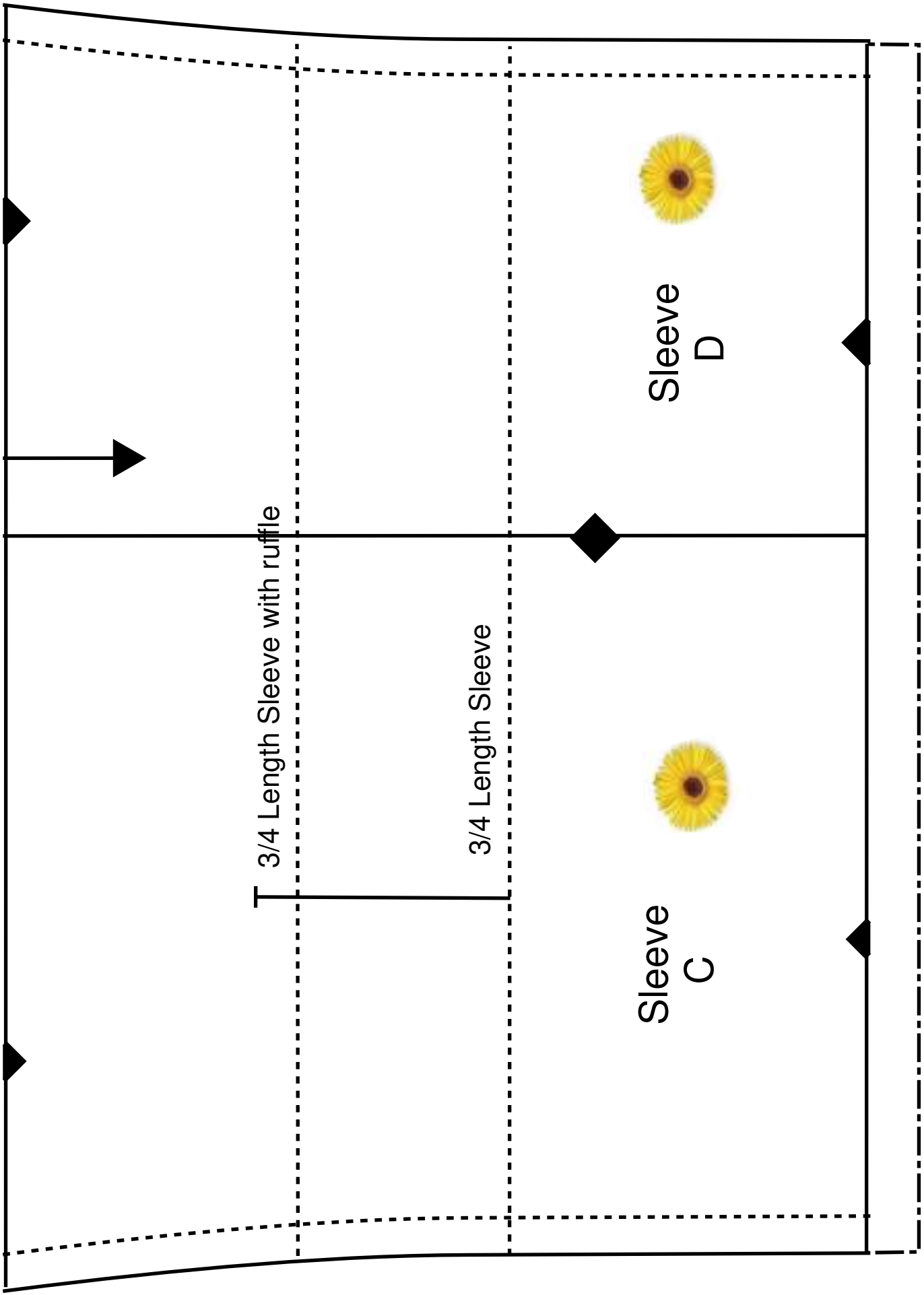


Sleeve Head

Sleeve
Paris Jacket
A
Cut
2 x in Lining
2 x in Shell Fabric
Age
5-6







3/4 Length Sleeve with ruffle

3/4 Length Sleeve

Sleeve
C

Sleeve
D



Paris Jacket

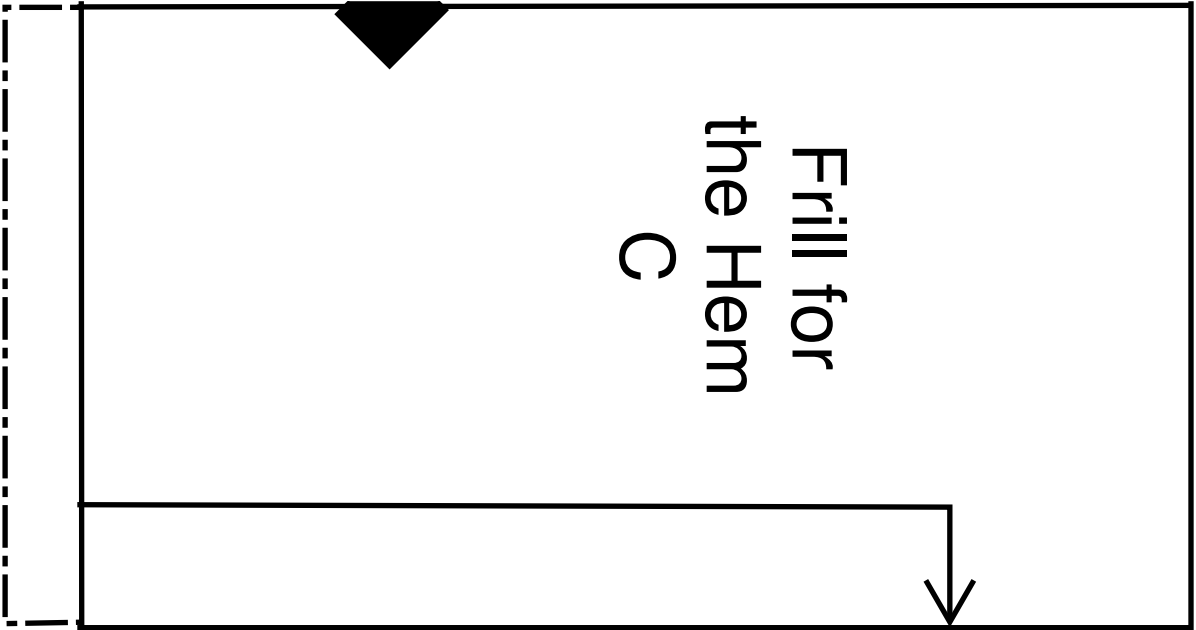
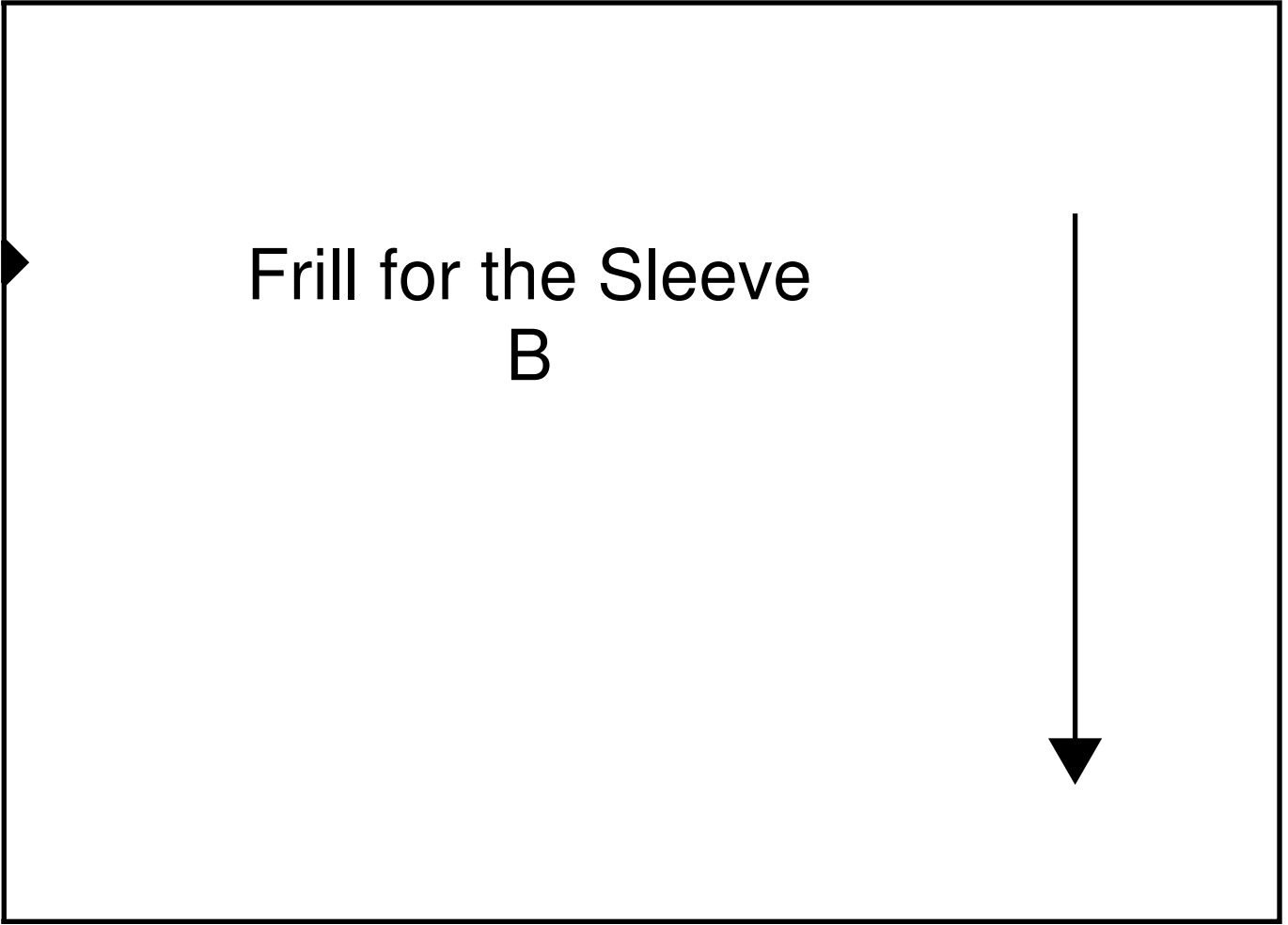
Age 5-6

Frill for the Sleeve

A

Cut

2x in Shell Fabric



Paris Jacket
Age 5-6
Frill for the Hem(Optional)
A

Cut

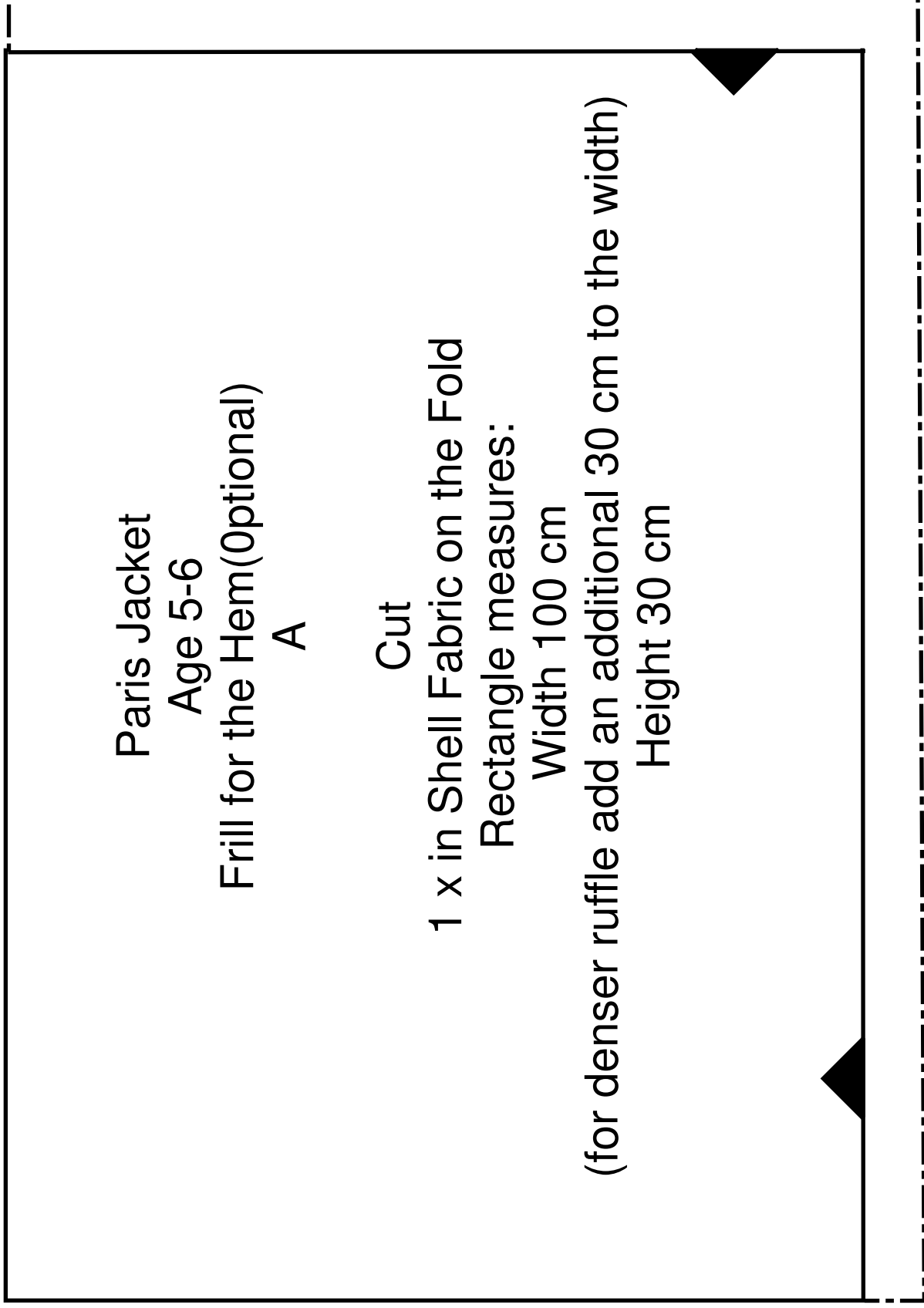
1 x in Shell Fabric on the Fold

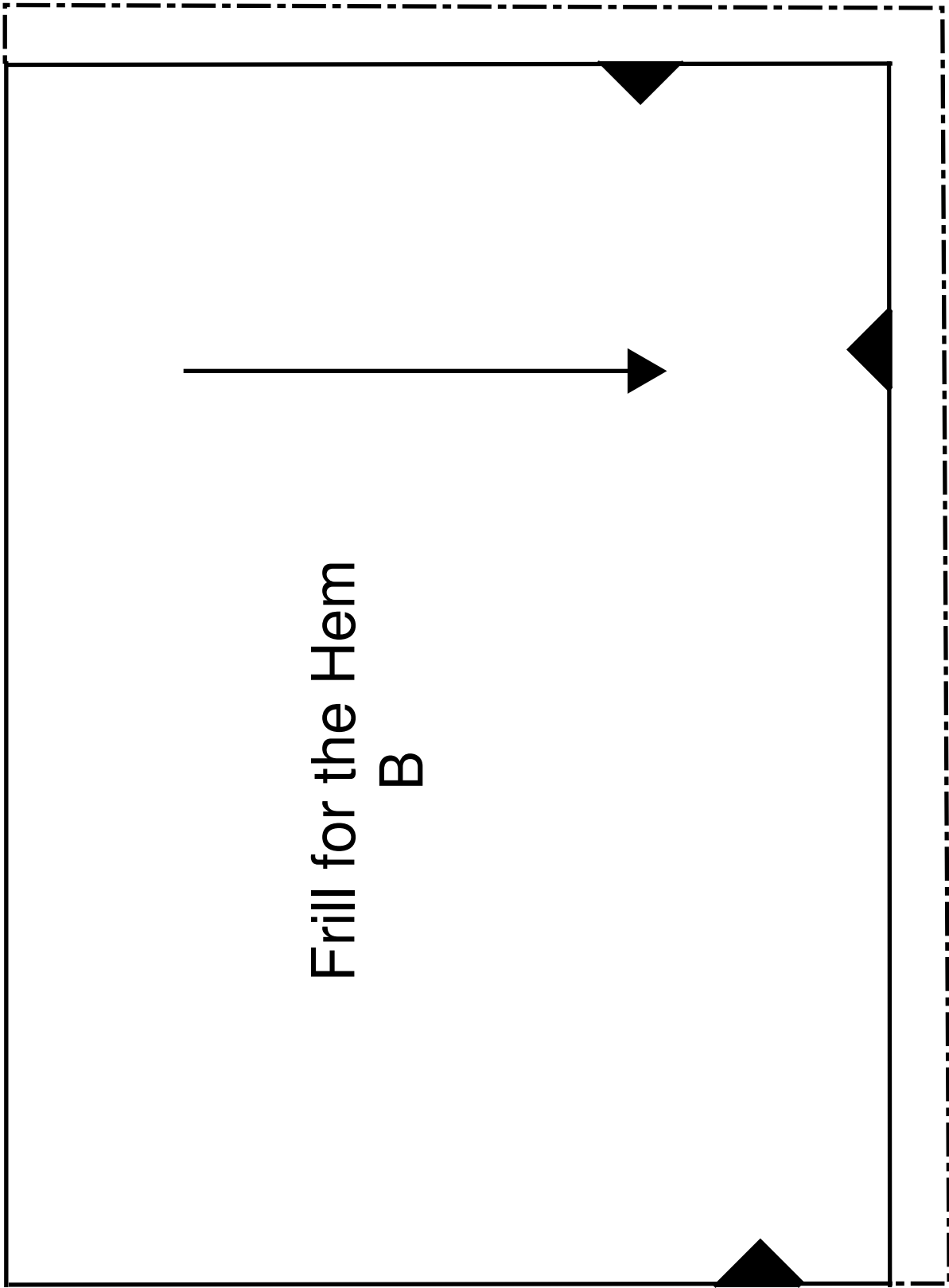
Rectangle measures:

Width 100 cm

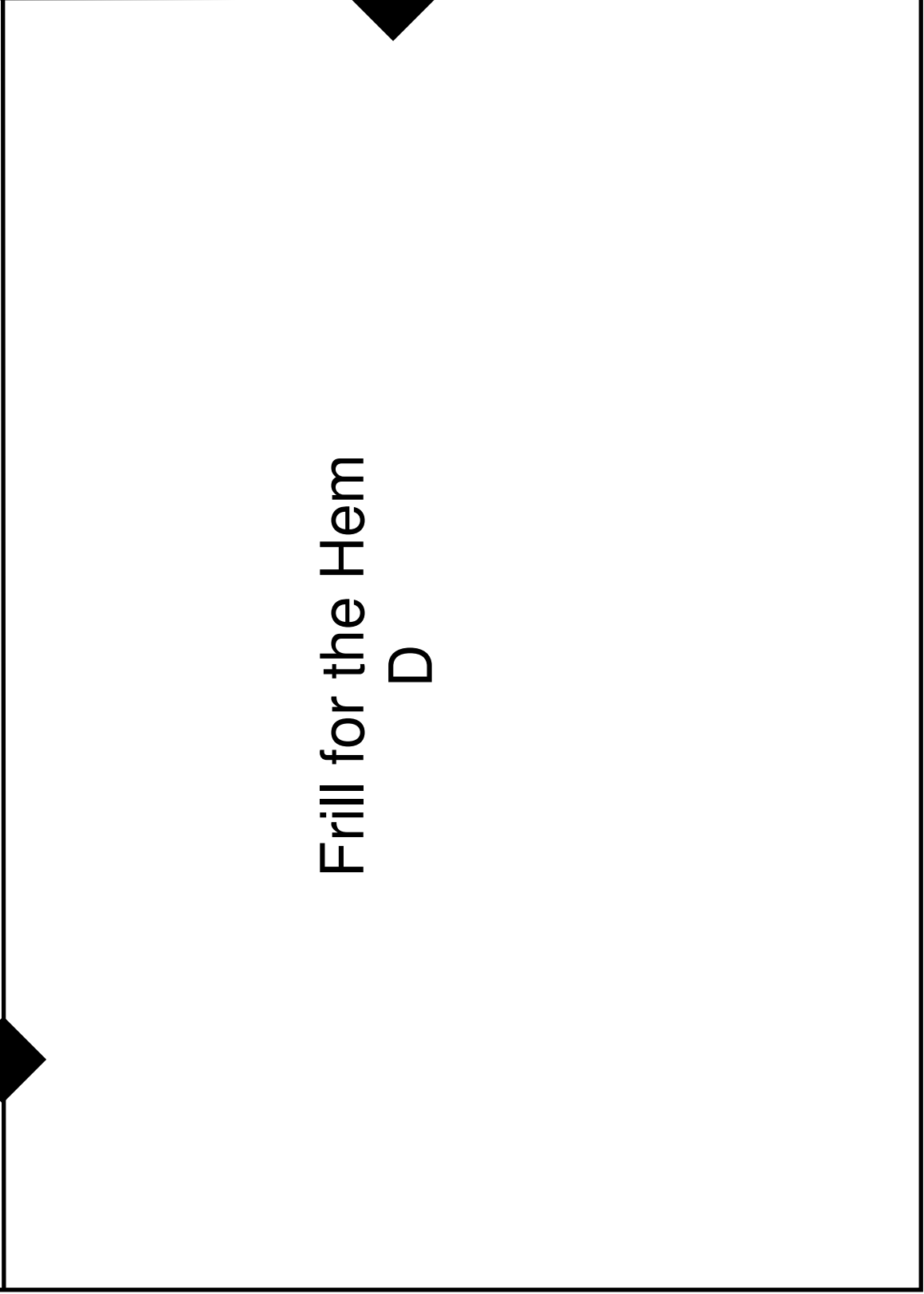
Height 30 cm

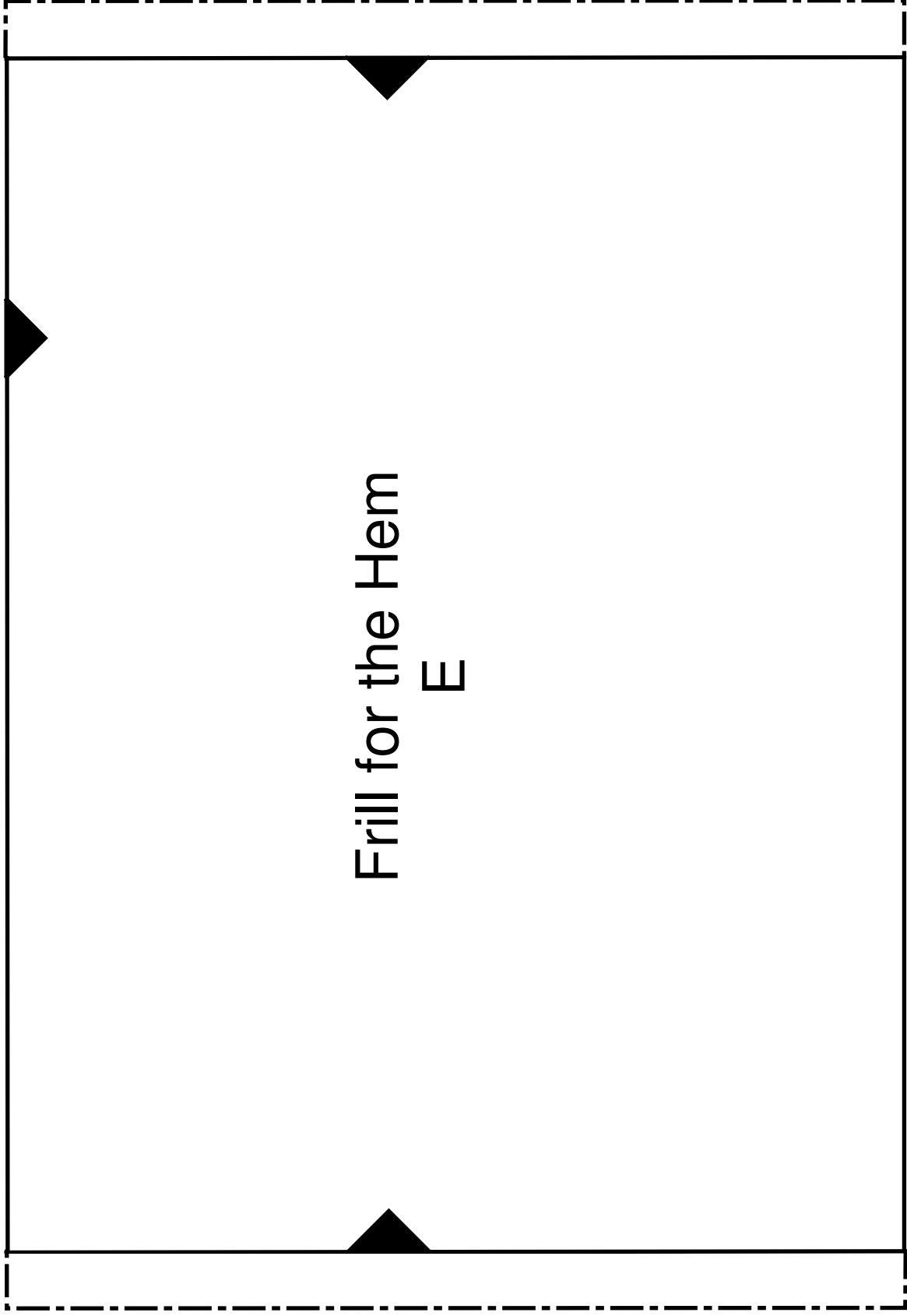
(for denser ruffle add an additional 30 cm to the width)





Frill for the Hem
D





Frill for the Hem
E

Assembly Plan

