

# Frocks & Frolics

## Paris Jacket

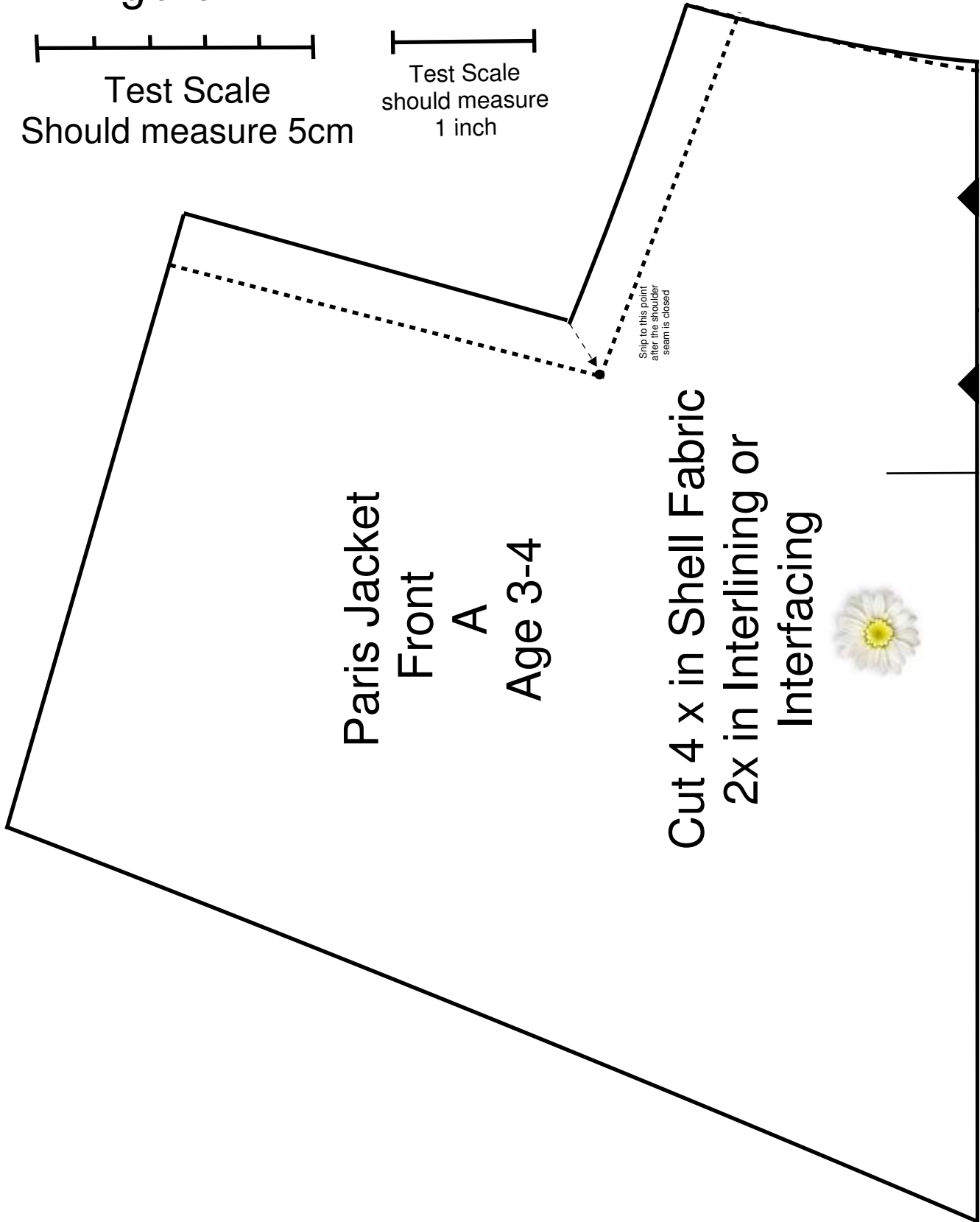
Age 3-4

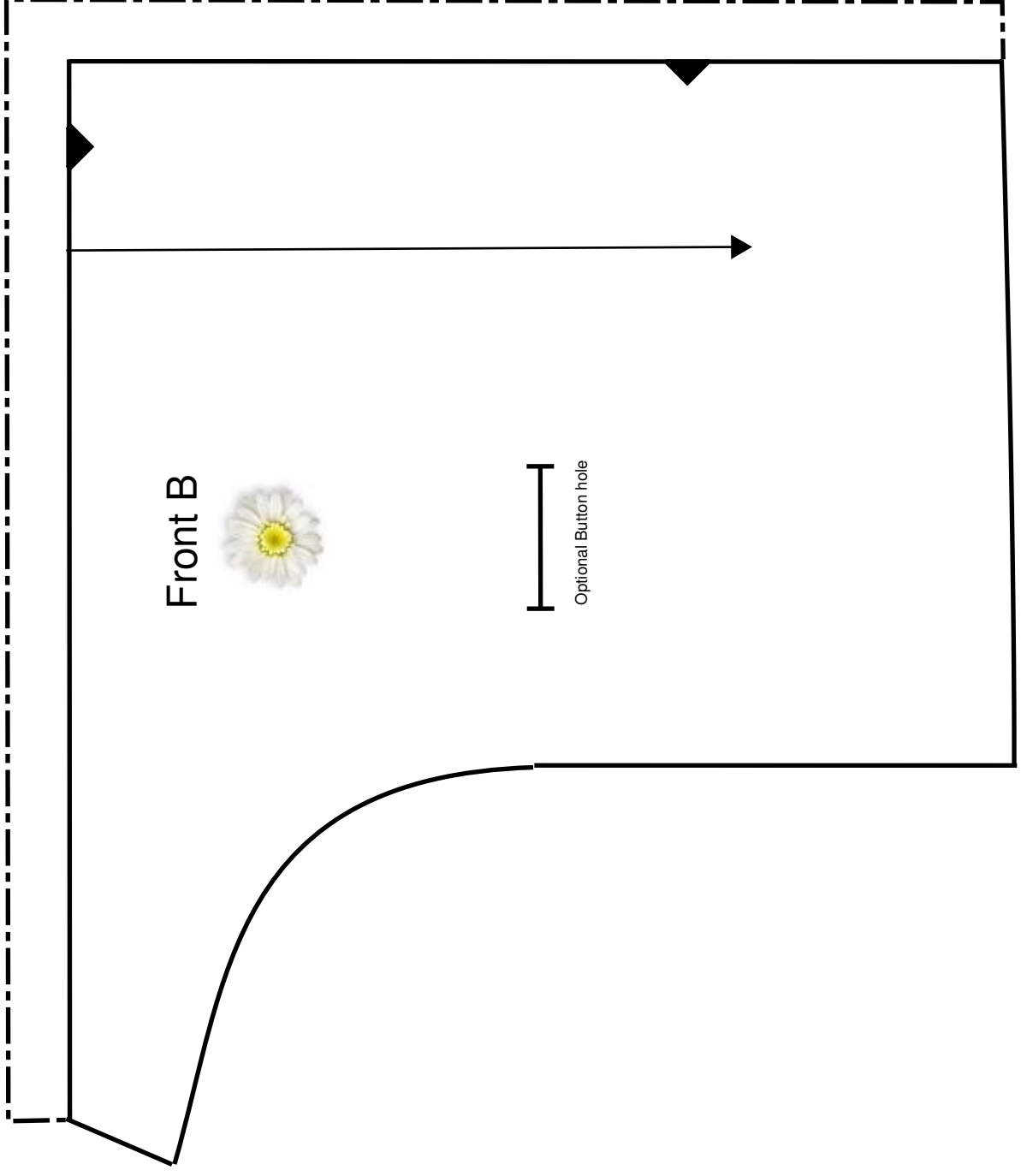


Test Scale  
Should measure 5cm



Test Scale  
should measure  
1 inch

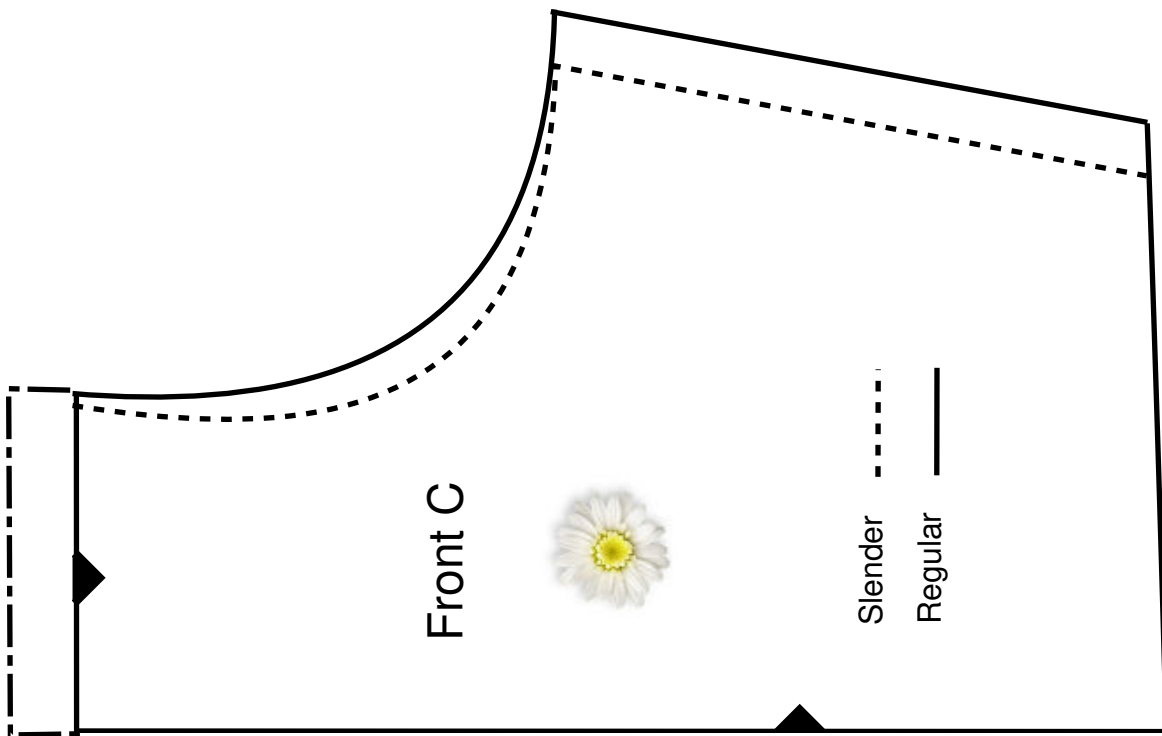
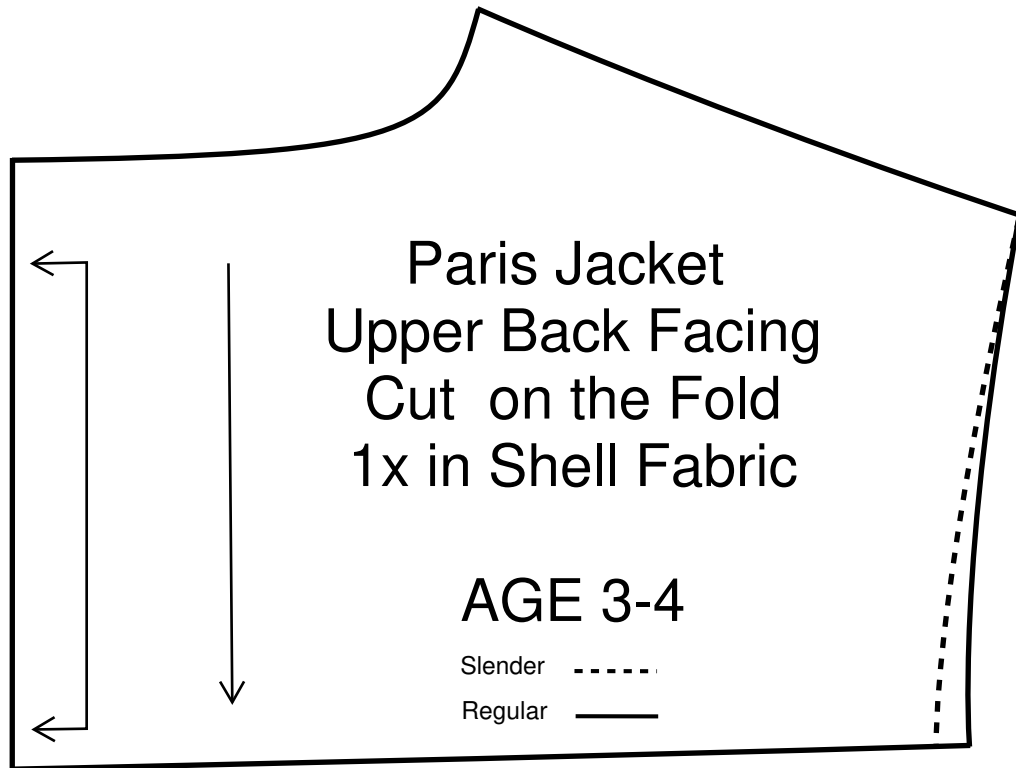




Front B



Optional Button hole



Paris Jacket  
Back

Age 3-4

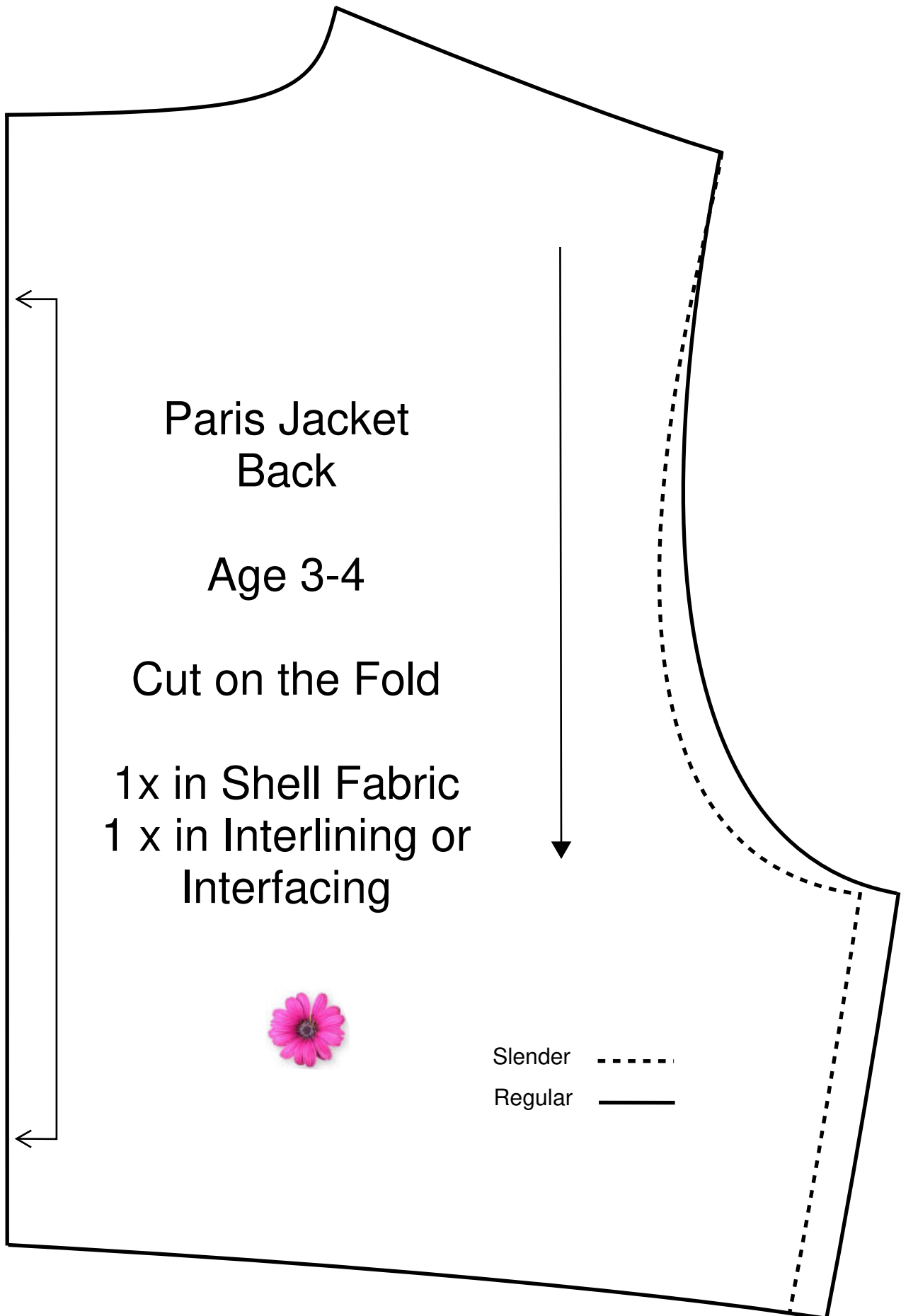
Cut on the Fold

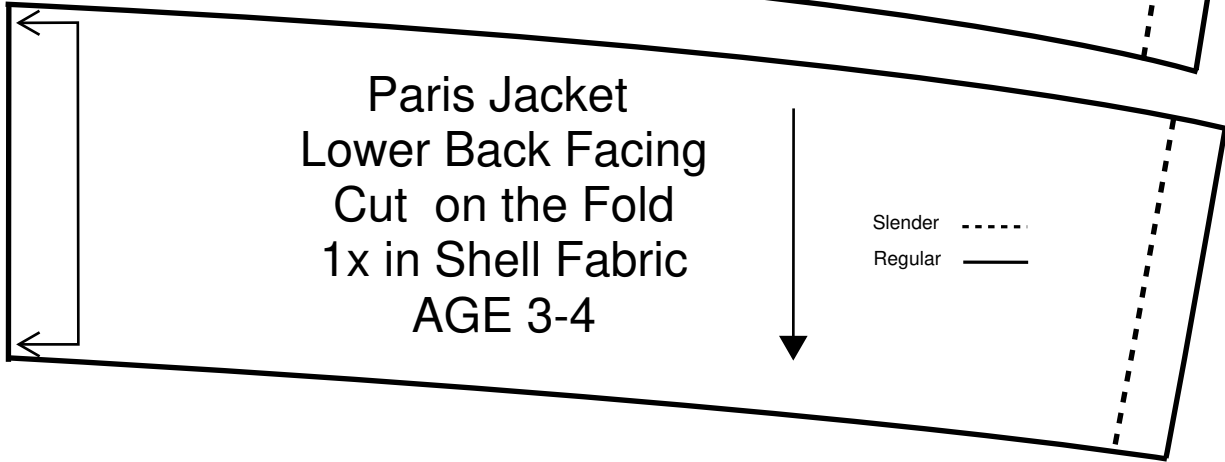
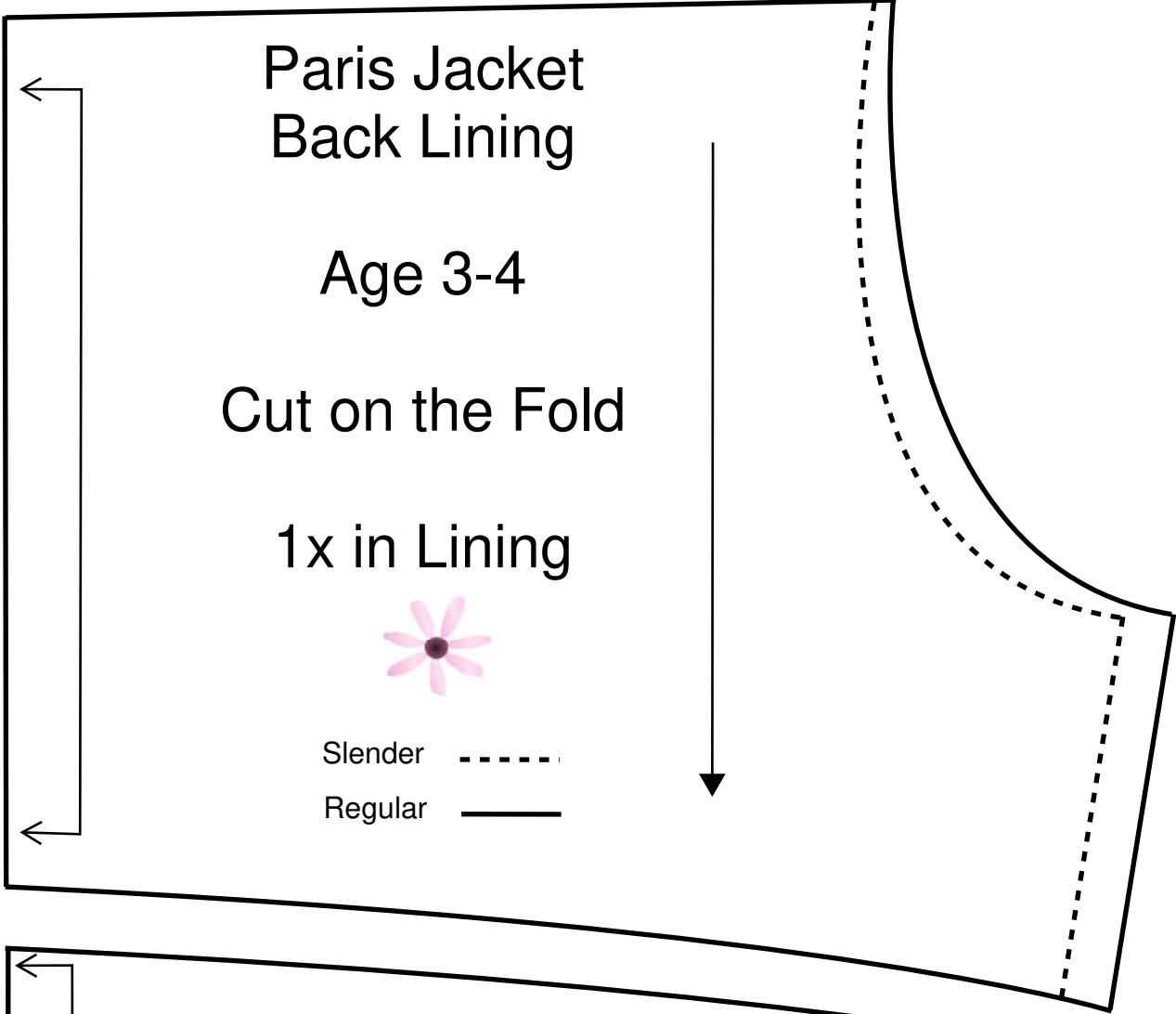
1x in Shell Fabric  
1 x in Interlining or  
Interfacing

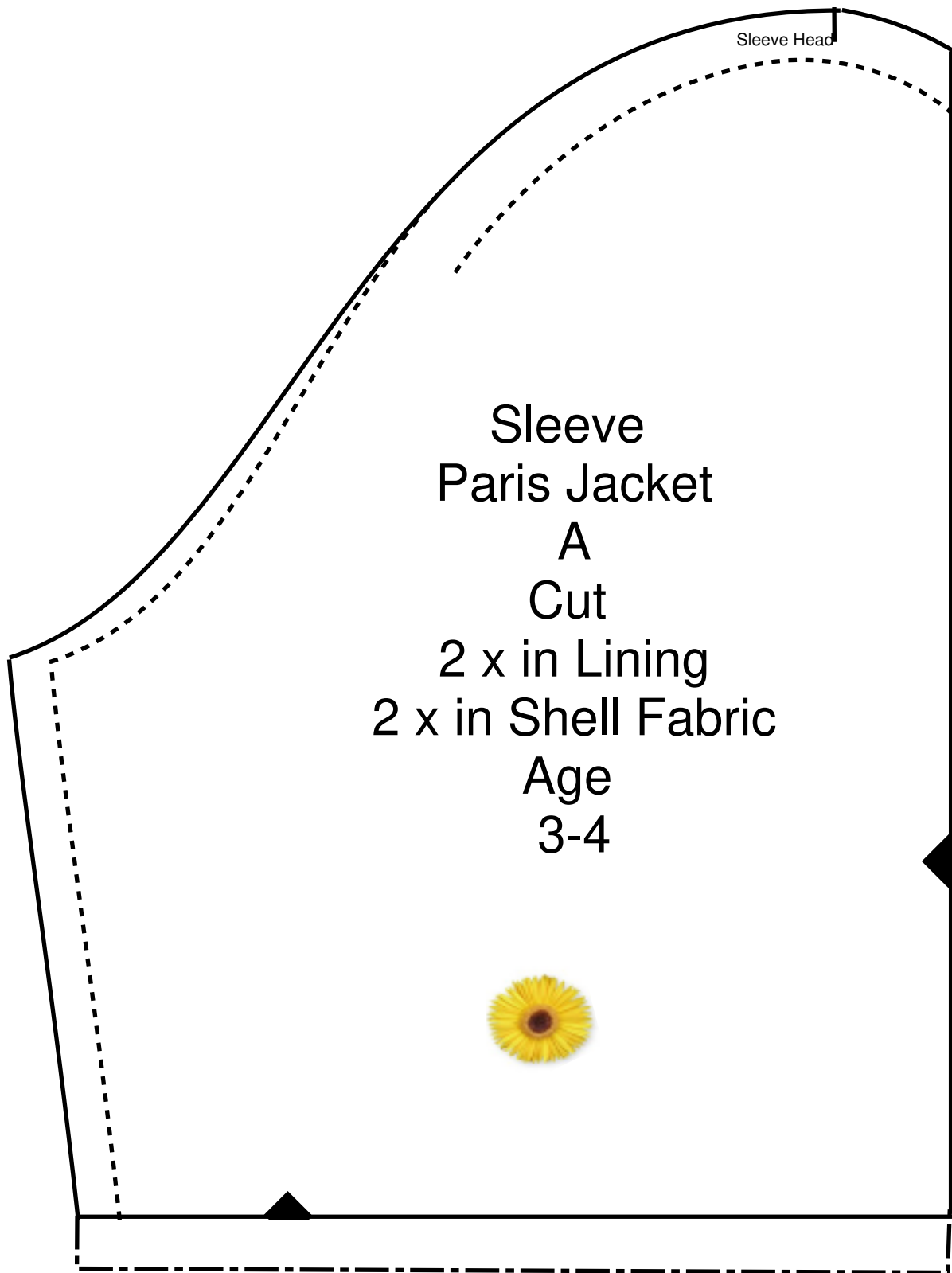


Slender - - - - -

Regular ————







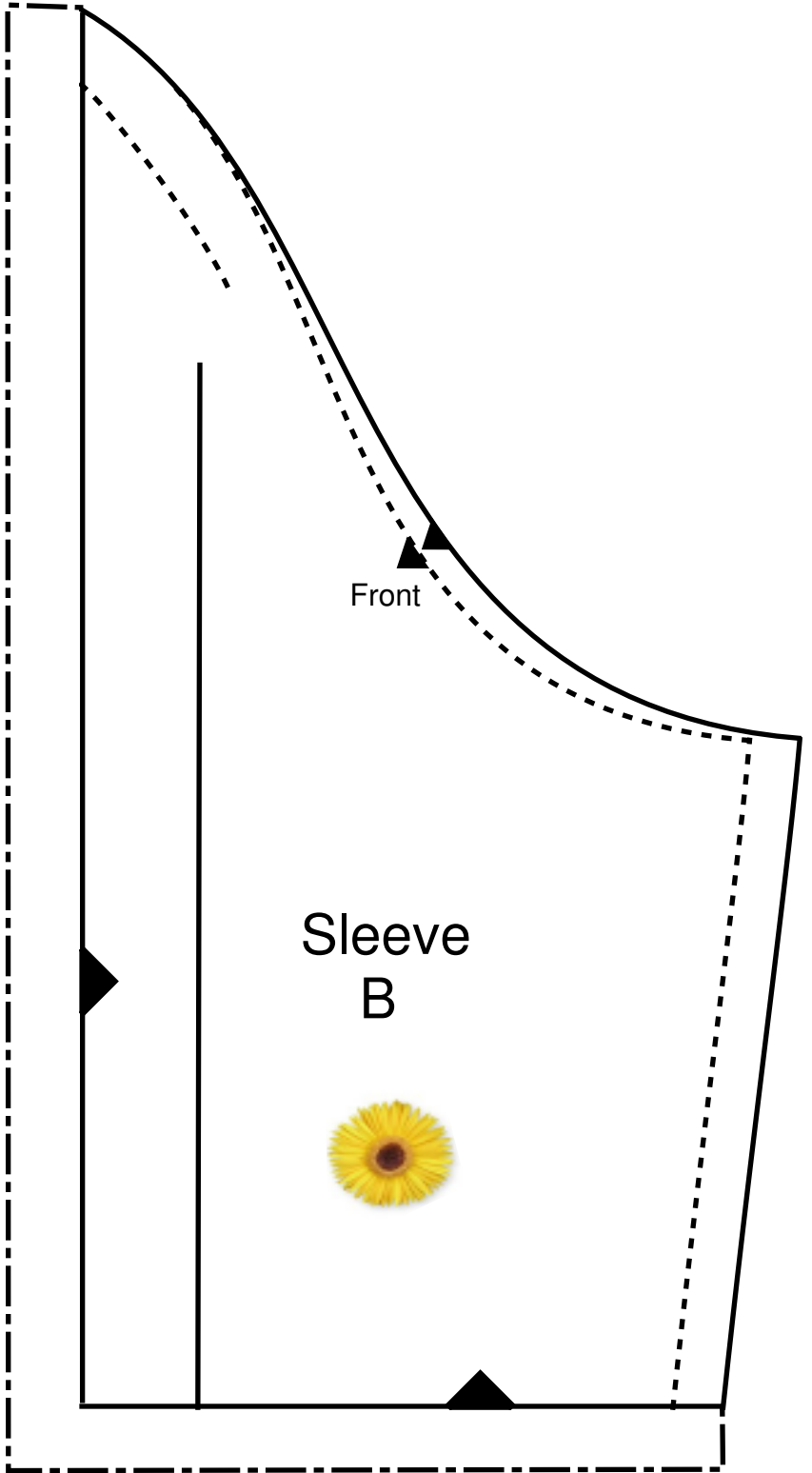
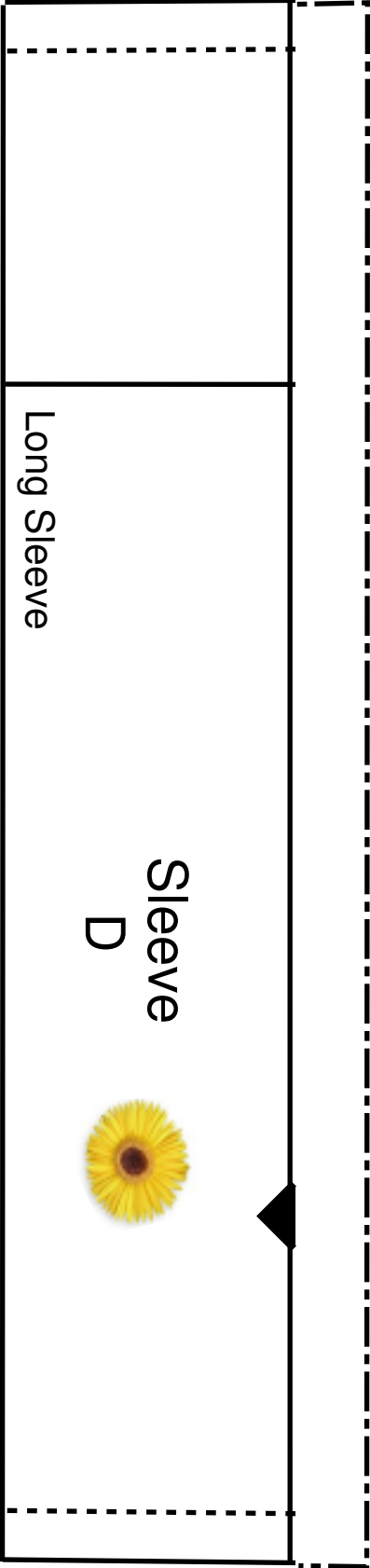
Sleeve Head

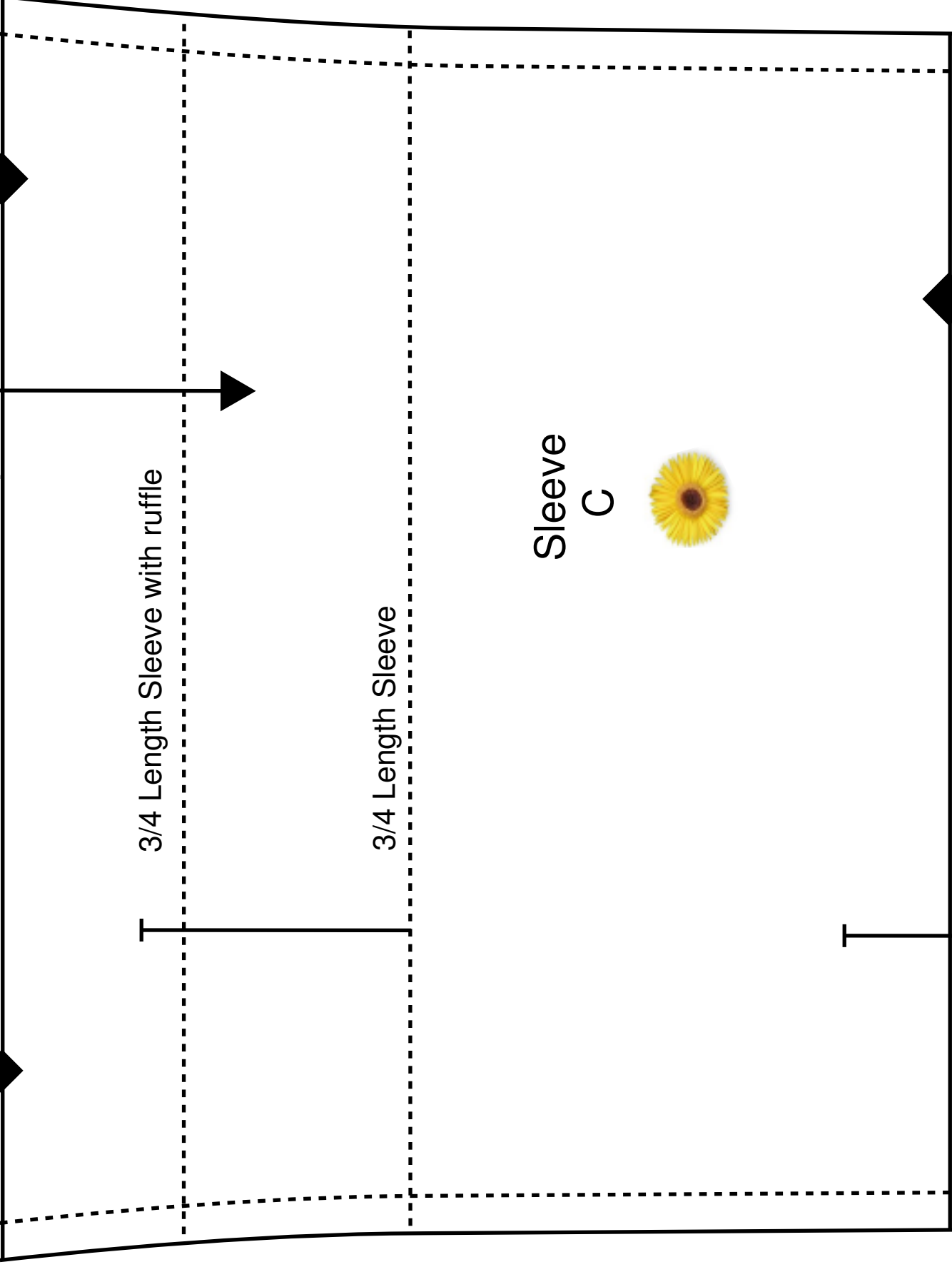
Sleeve  
Paris Jacket  
A  
Cut

2 x in Lining  
2 x in Shell Fabric

Age  
3-4







3/4 Length Sleeve with ruffle

3/4 Length Sleeve

Sleeve  
C





Paris Jacket  
Age 3-4  
Frill for the Sleeve  
(Optional)  
A

Cut  
2x in Shell Fabric

Frill for the Sleeve  
B



Paris Jacket  
Age 3-4  
Frill for the Hem(Optional)  
A

Cut

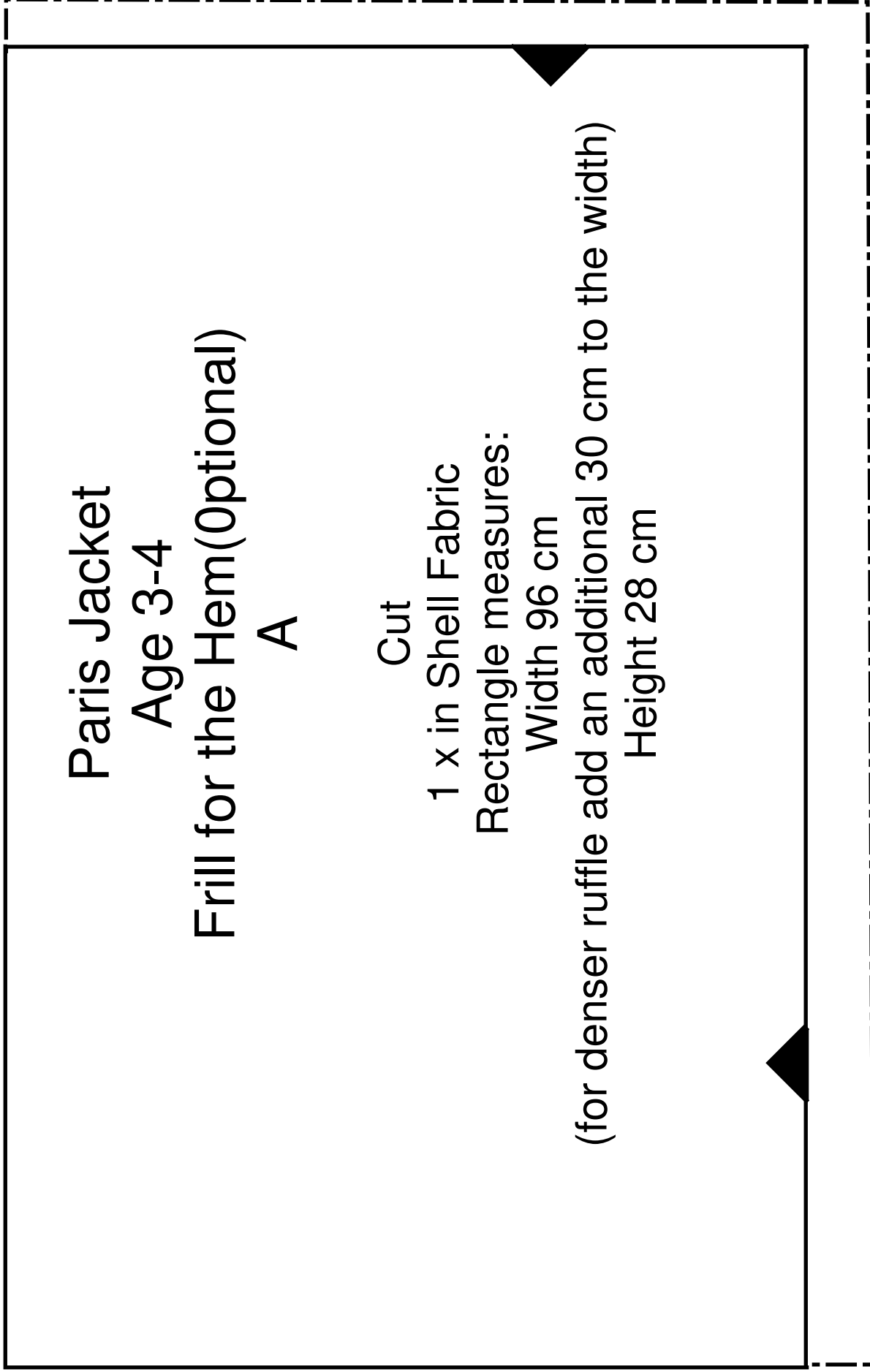
1 x in Shell Fabric

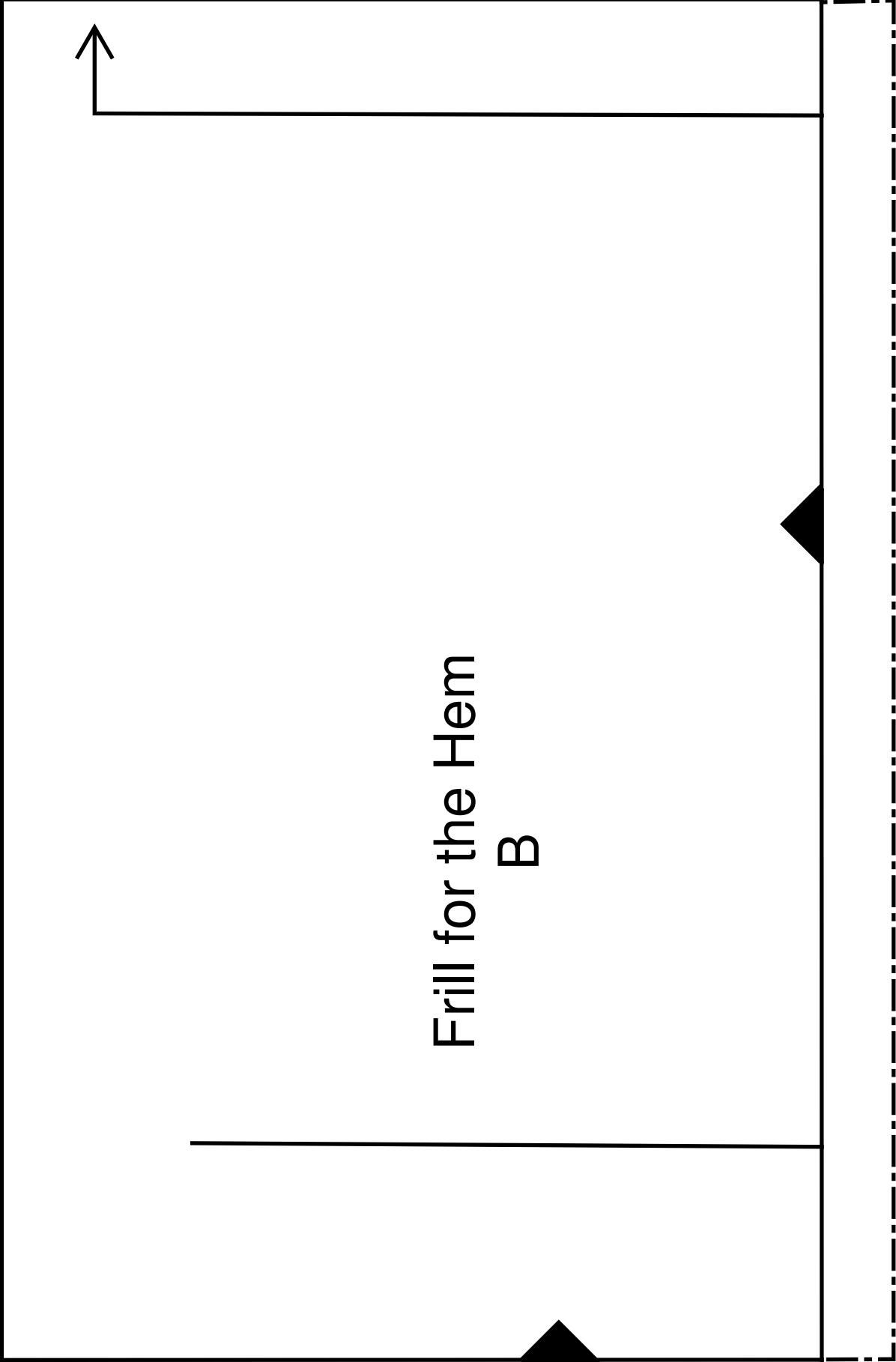
Rectangle measures:

Width 96 cm

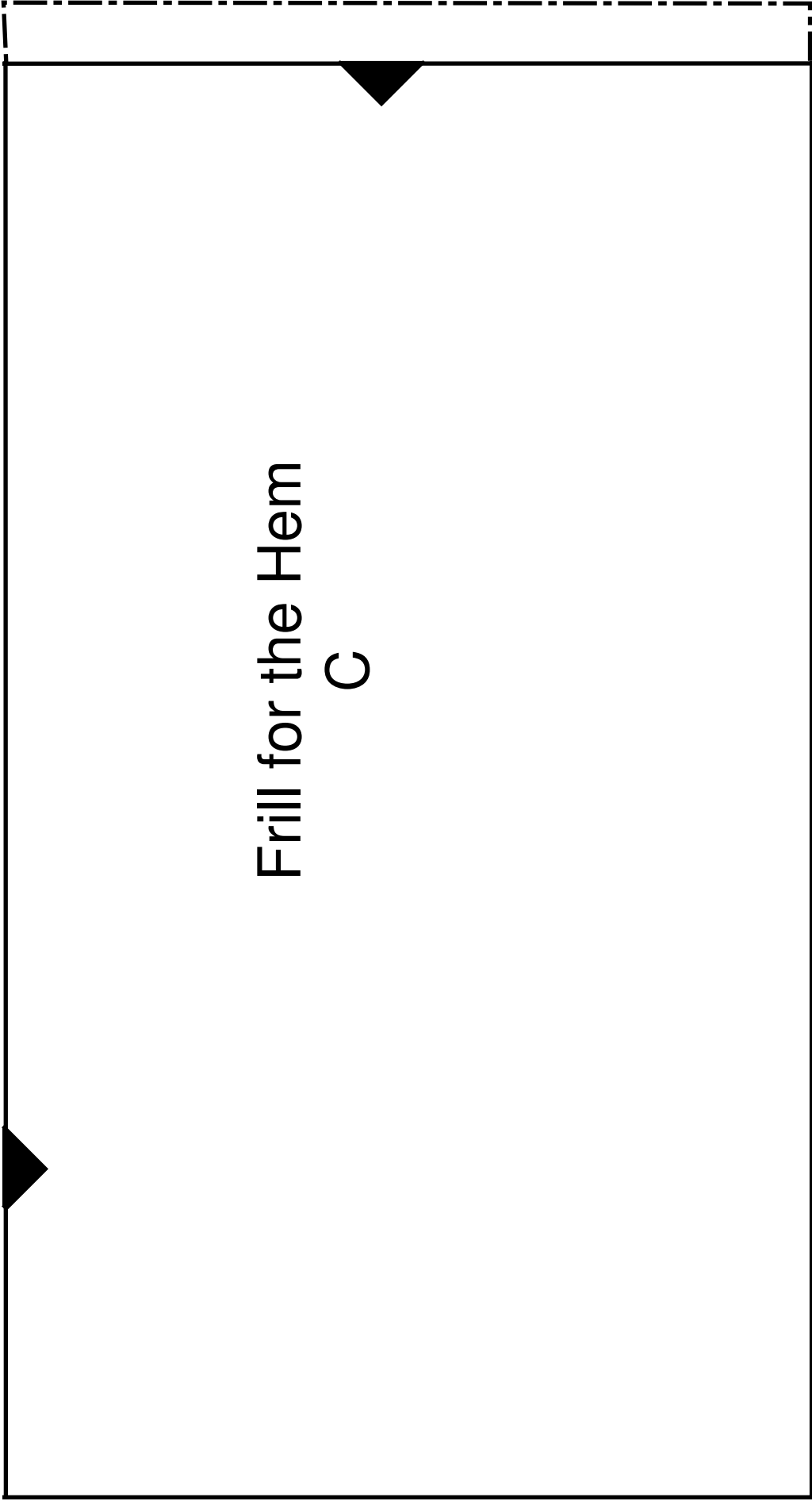
(for denser ruffle add an additional 30 cm to the width)

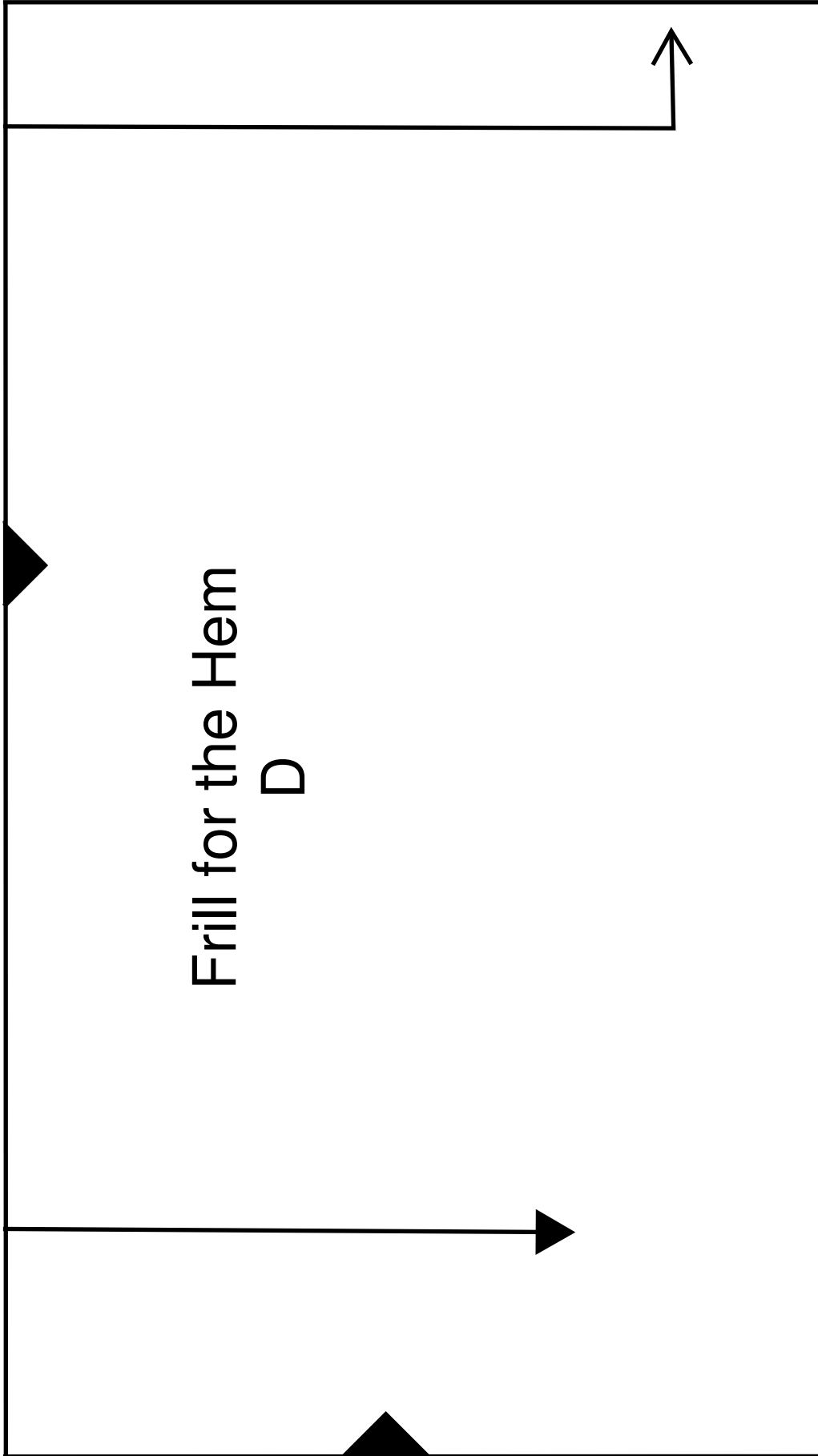
Height 28 cm





Frill for the Hem  
C





Frill for the Hem  
D

# Assembly Plan

