

# Frocks & Frolics

## Paris Jacket

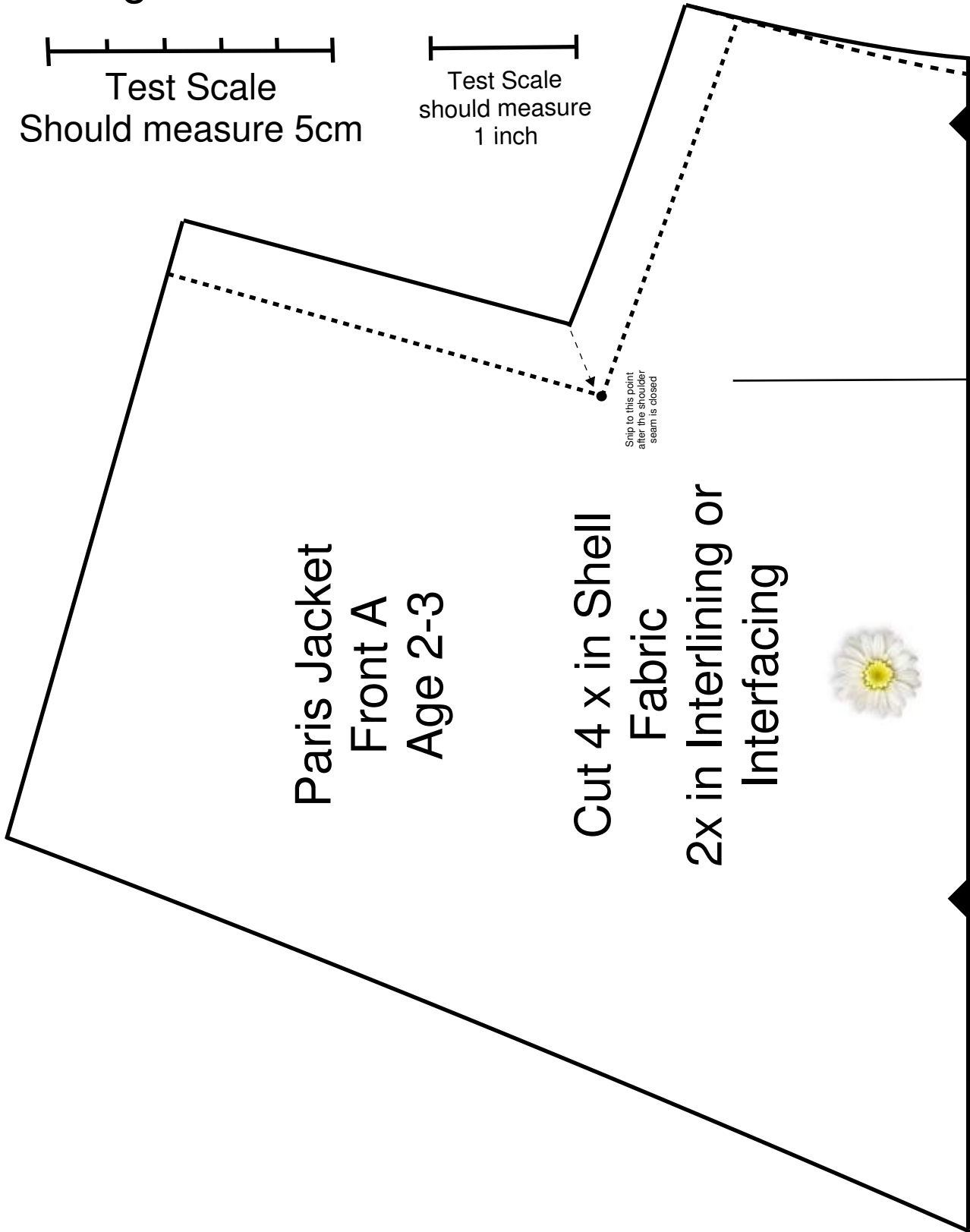
Age 2-3



Test Scale  
Should measure 5cm



Test Scale  
should measure  
1 inch

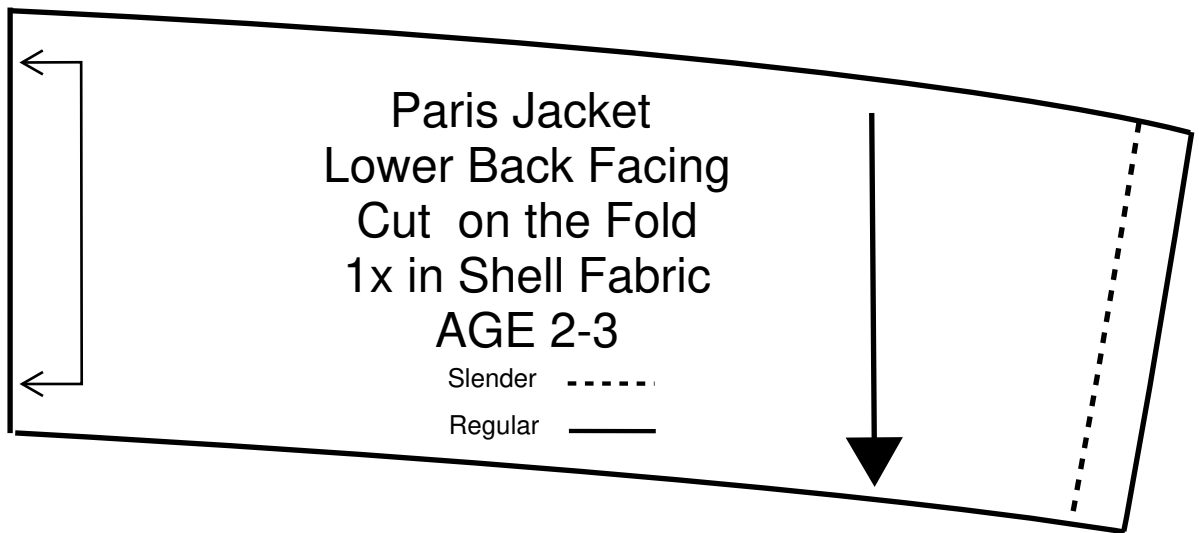
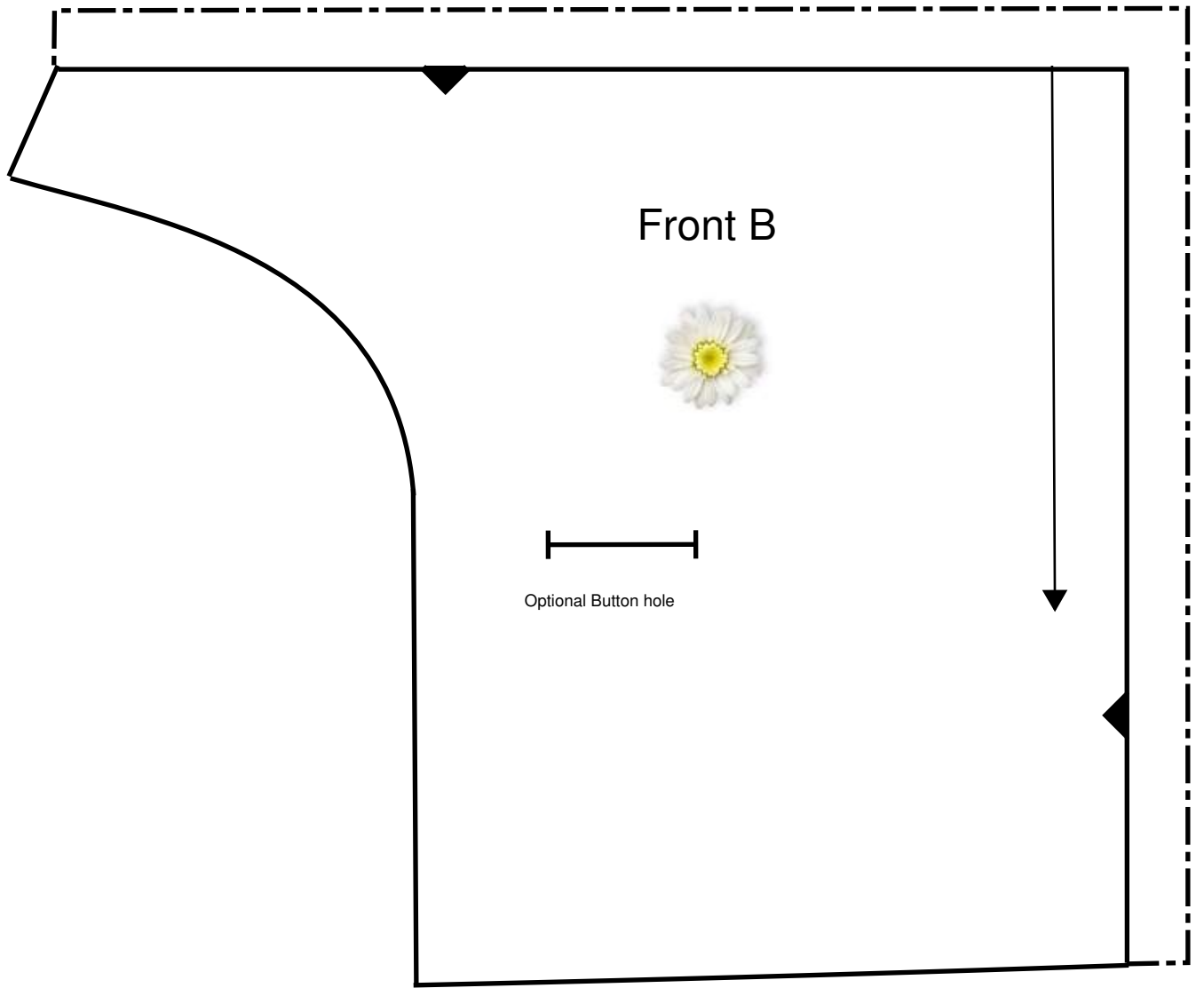


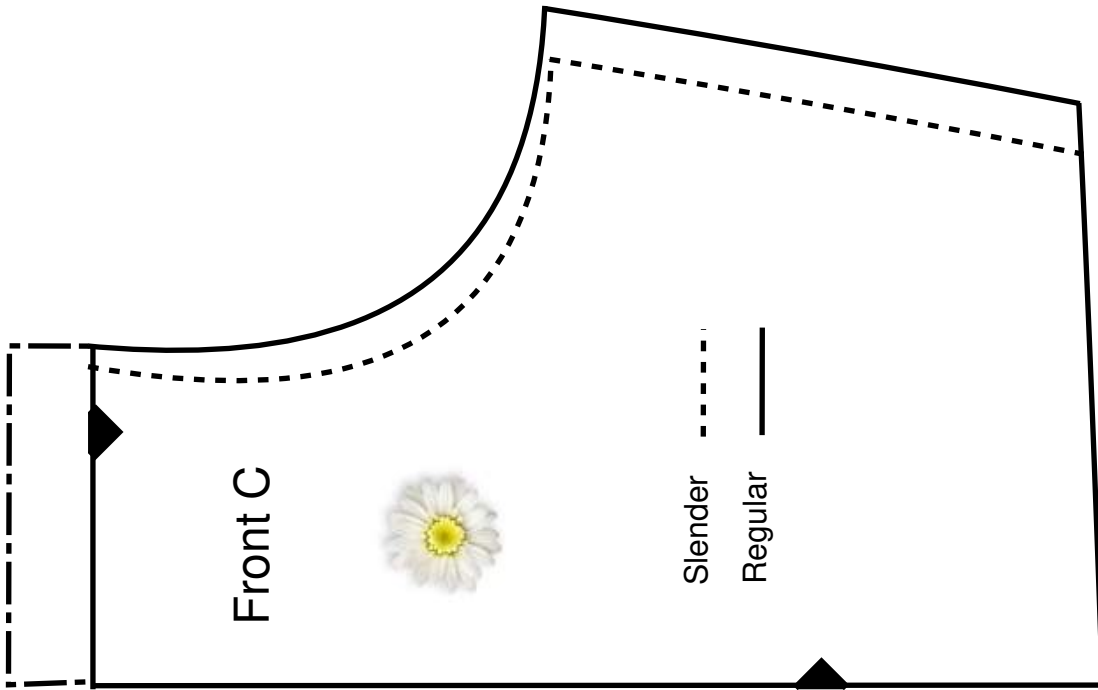
Paris Jacket  
Front A  
Age 2-3

Cut 4 x in Shell  
Fabric  
2x in Interlining or  
Interfacing



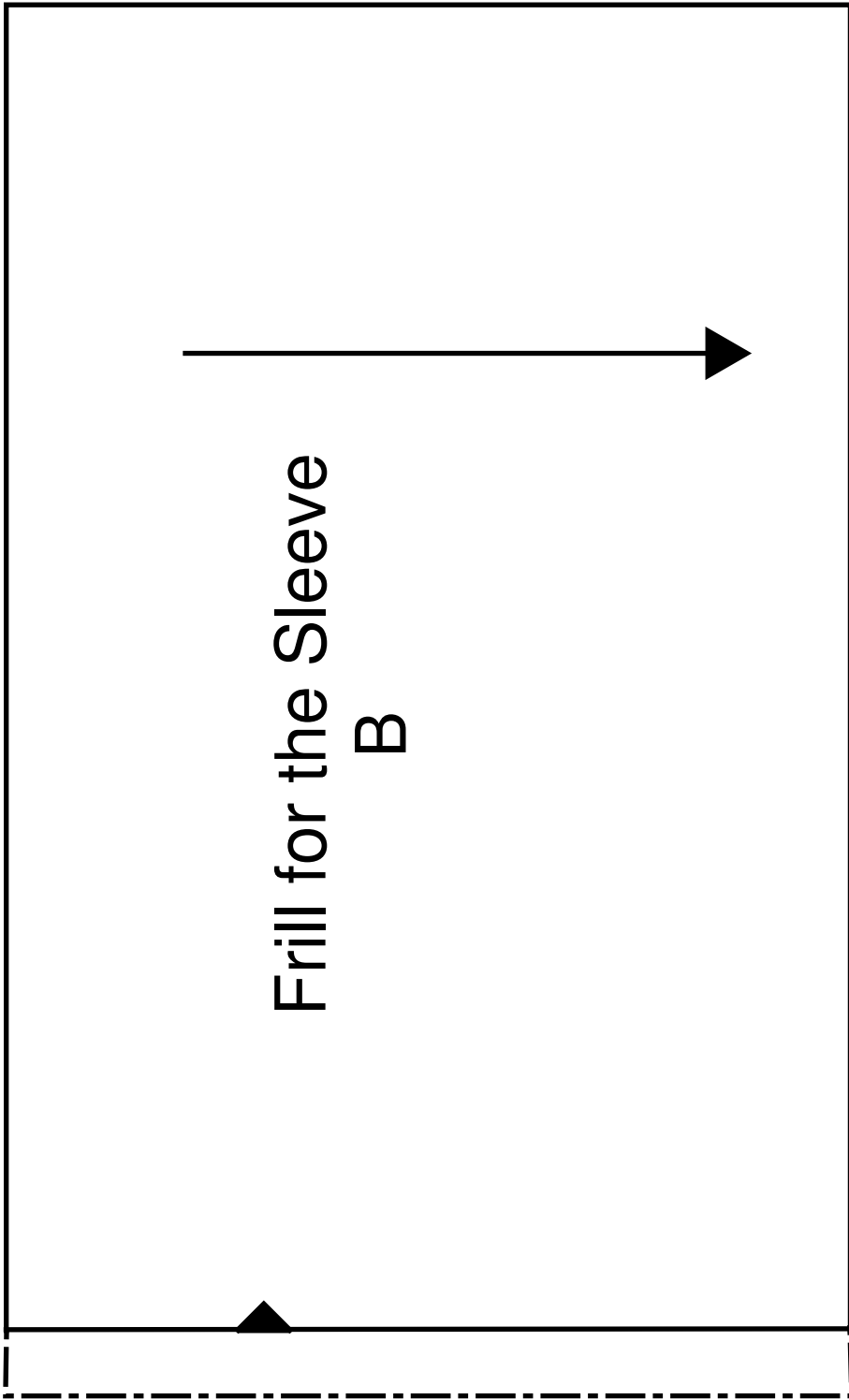
Snip to this point  
after the shoulder  
seam is closed





Paris Jacket  
Age 2-3  
Frill for the Sleeve  
A

Cut  
2x in Shell Fabric



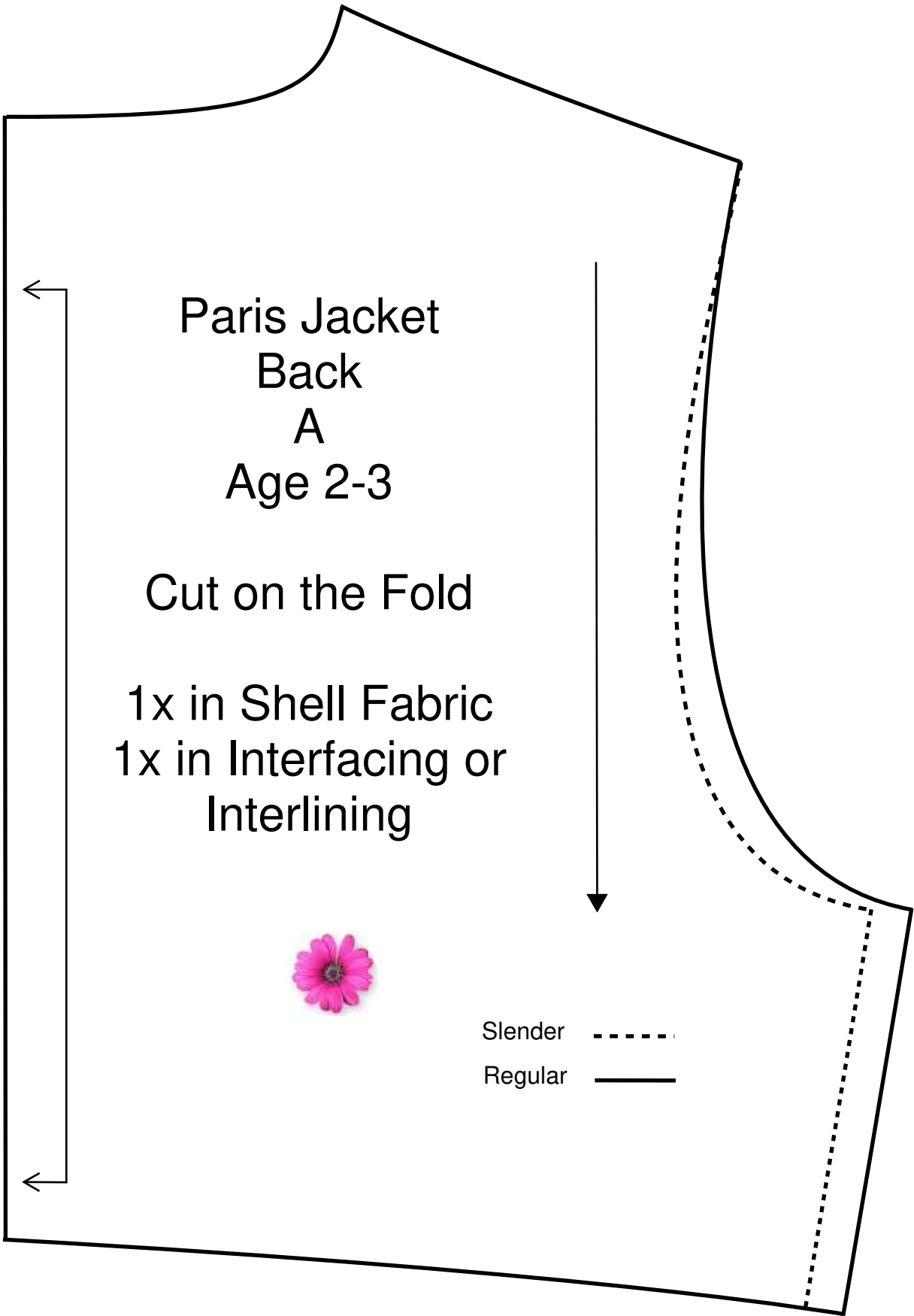
Paris Jacket  
Back  
A  
Age 2-3

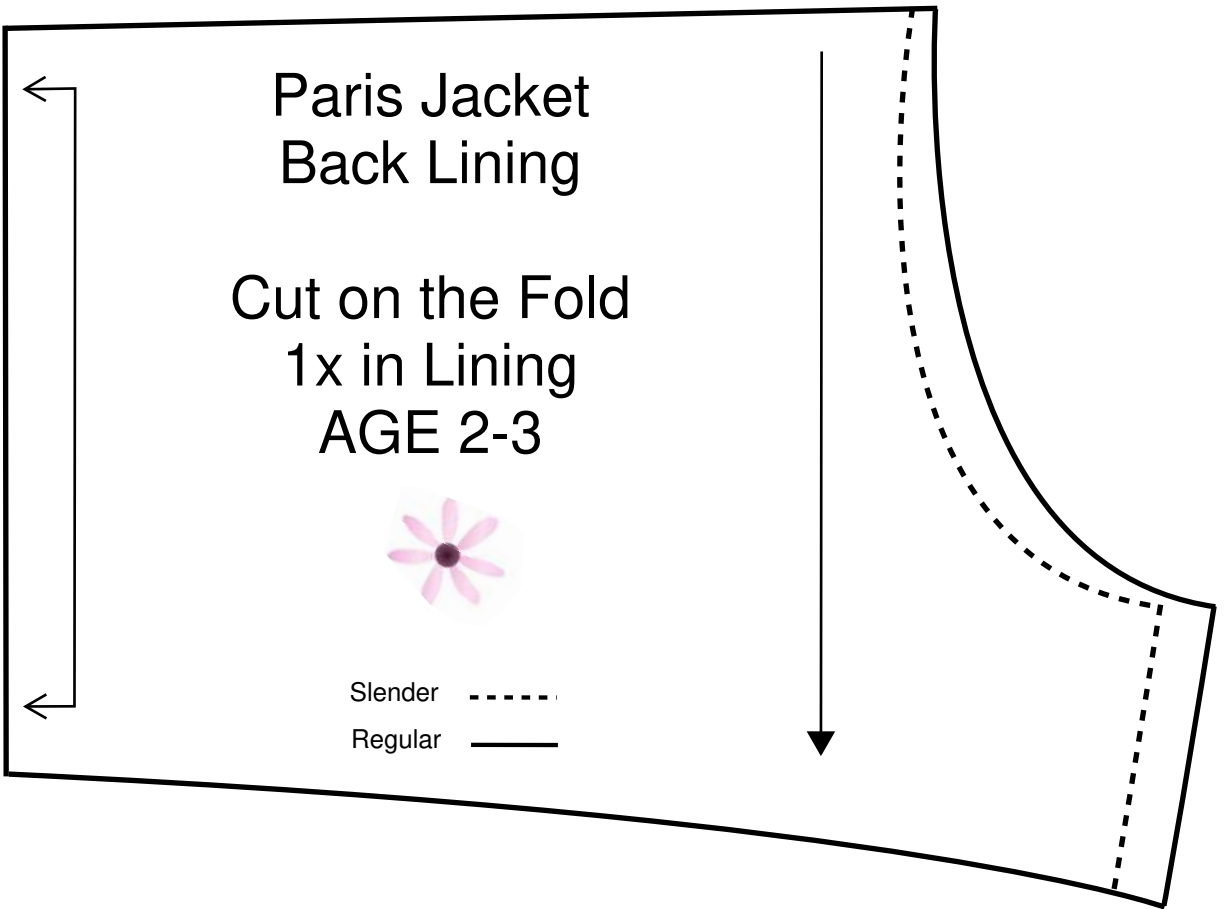
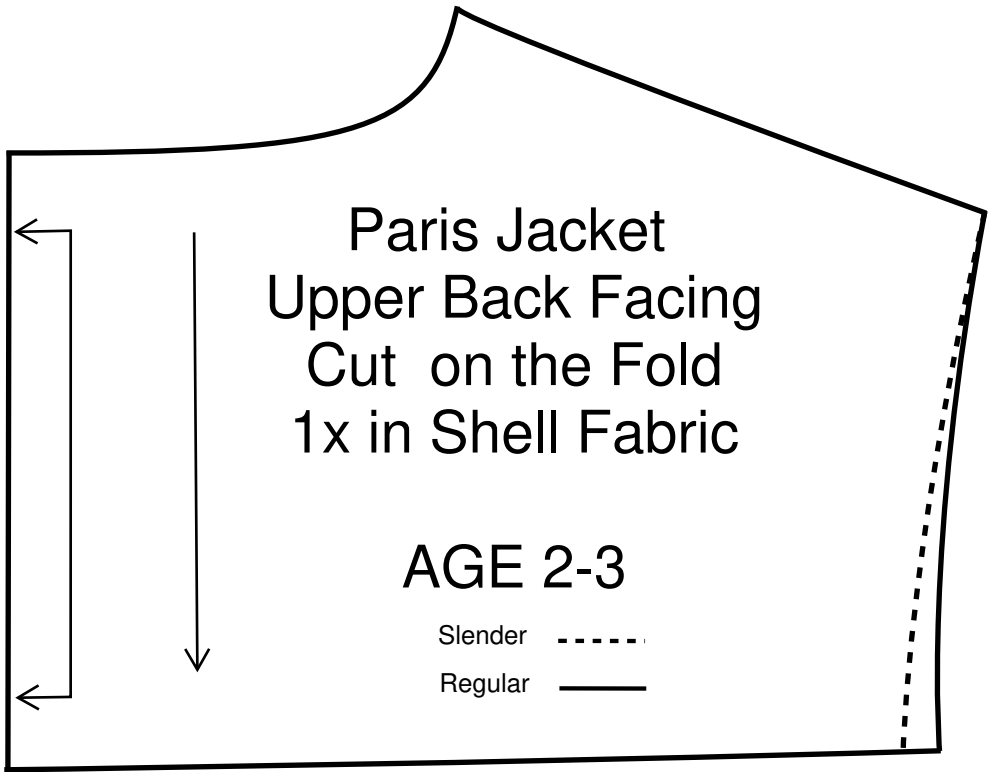
Cut on the Fold

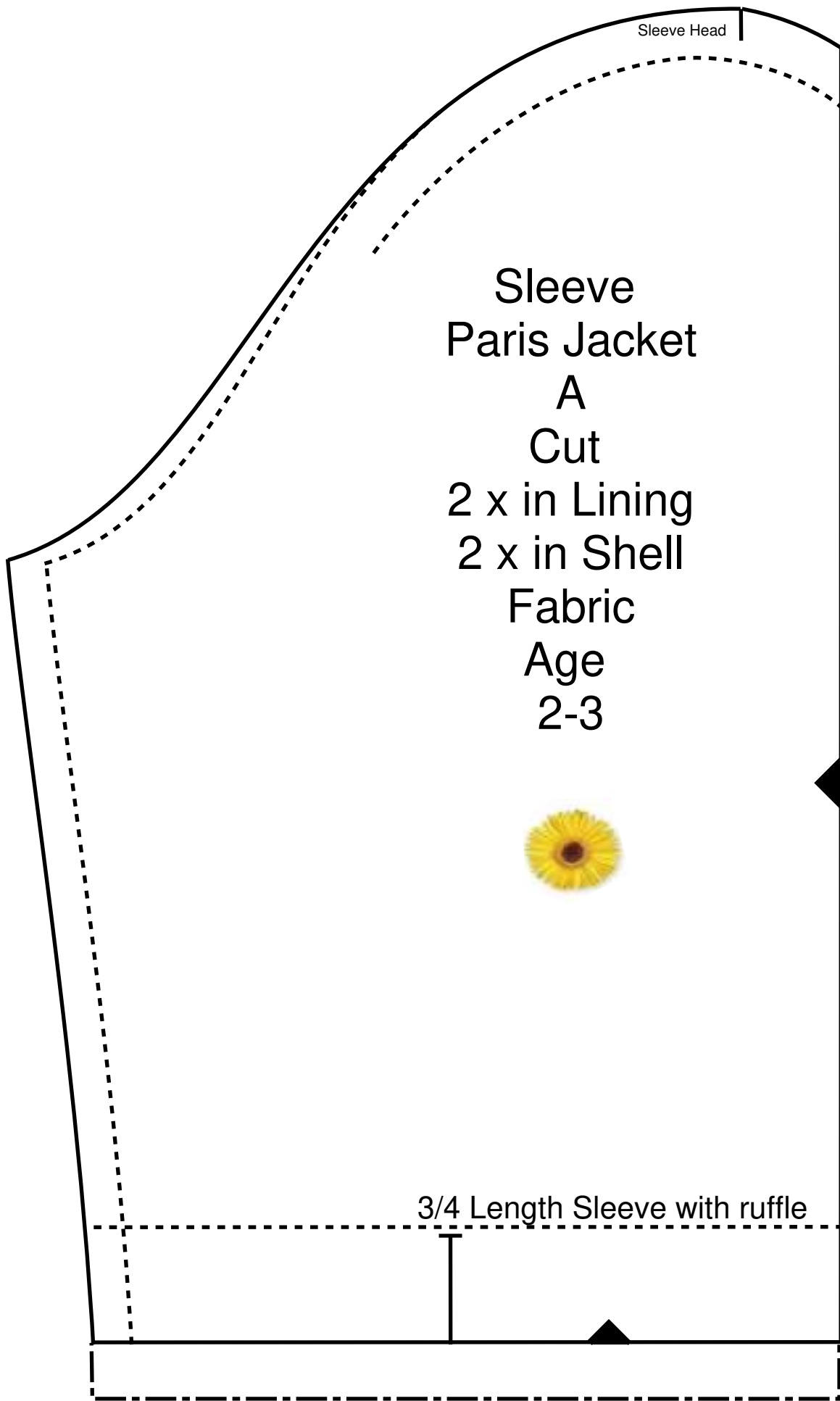
1x in Shell Fabric  
1x in Interfacing or  
Interlining



Slender - - - - -  
Regular ————



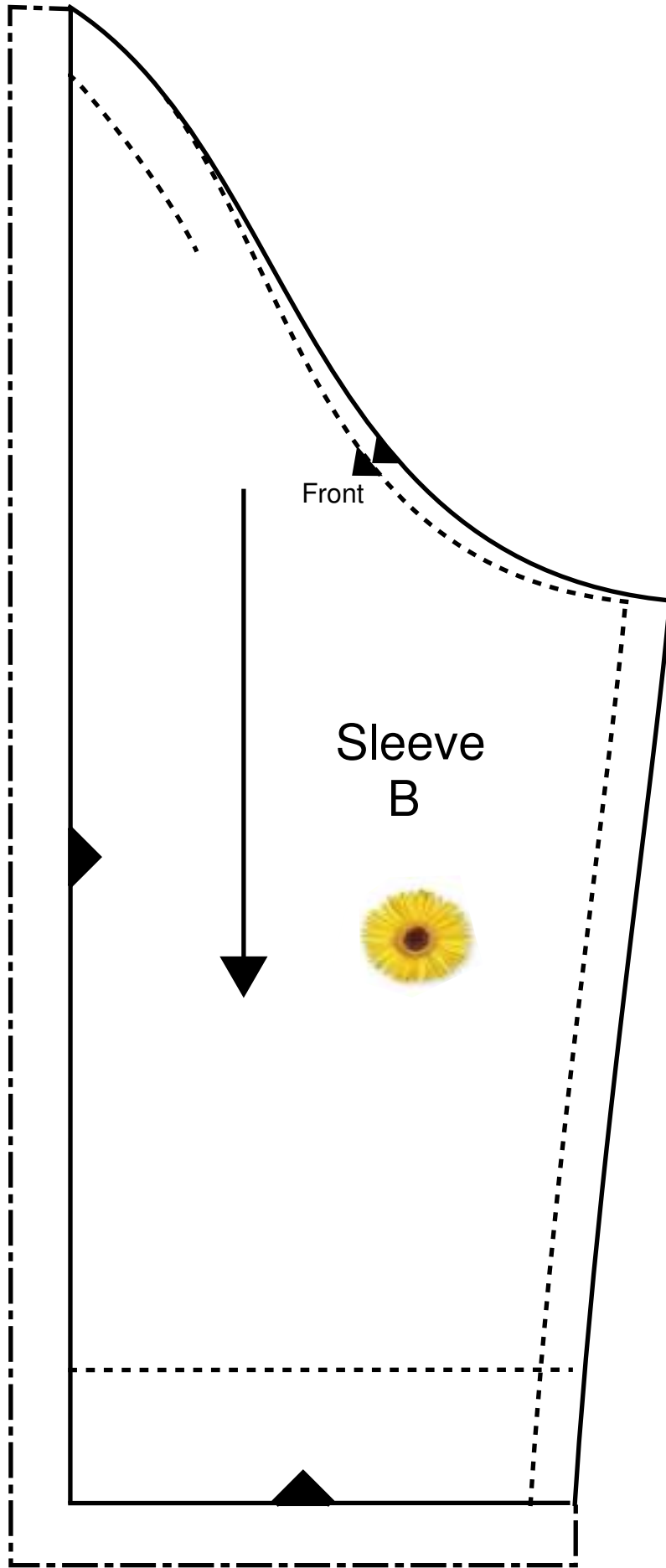




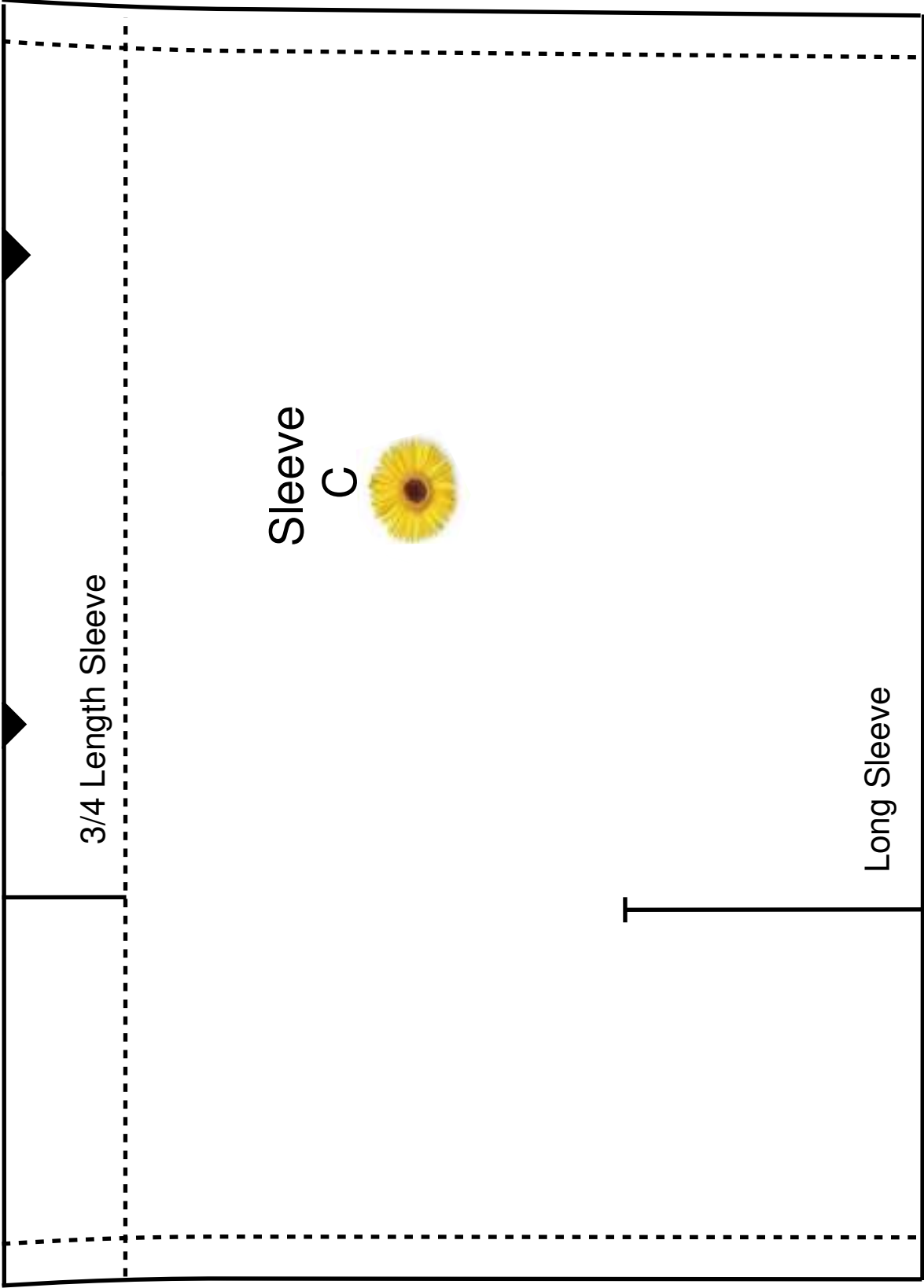
Sleeve Head

Sleeve  
Paris Jacket  
A  
Cut  
2 x in Lining  
2 x in Shell  
Fabric  
Age  
2-3

3/4 Length Sleeve with ruffle







3/4 Length Sleeve

Sleeve  
C



Long Sleeve

Paris Jacket  
Age 2-3  
Frill for the Hem(Optional)  
A

Cut

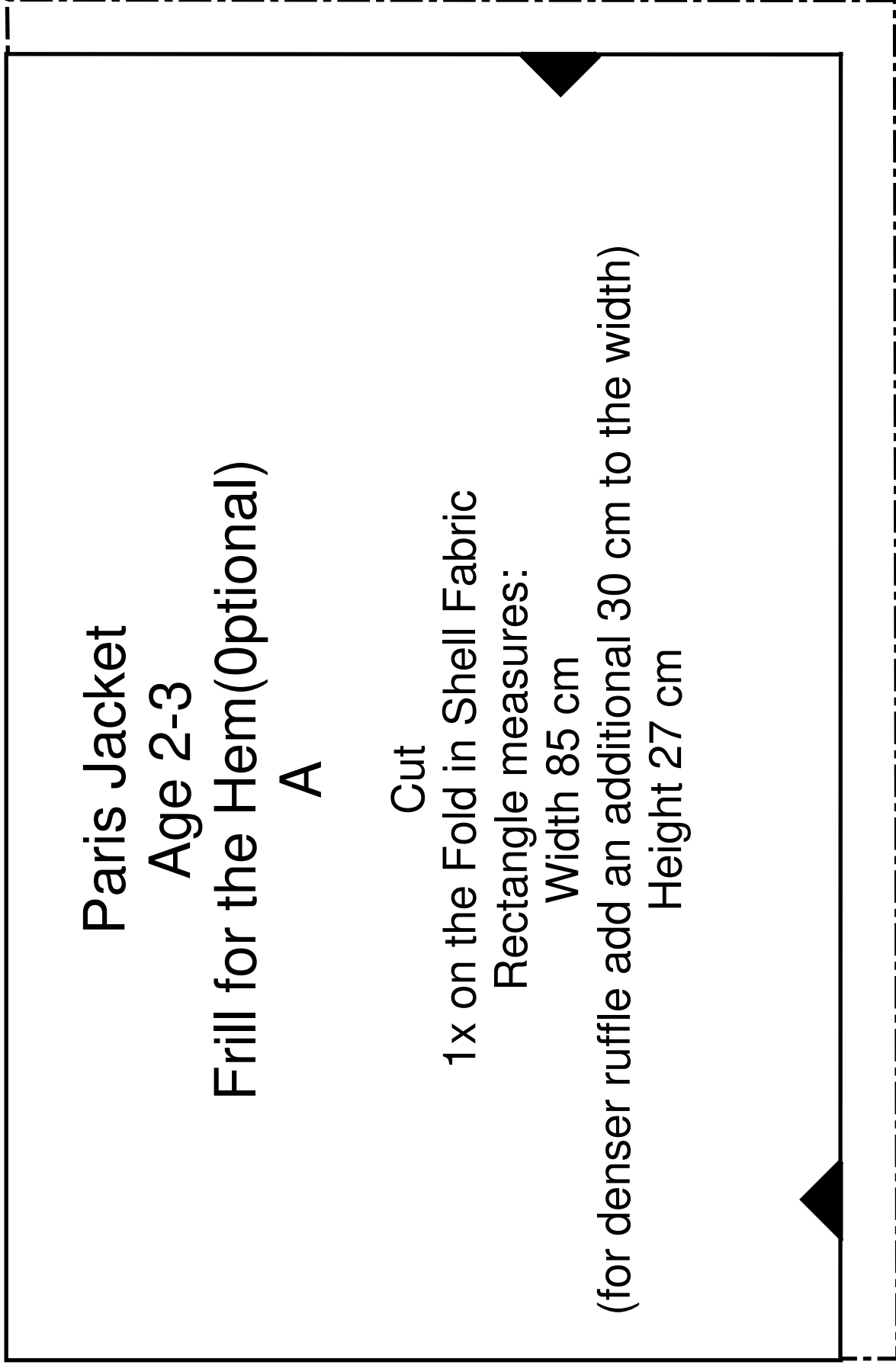
1x on the Fold in Shell Fabric

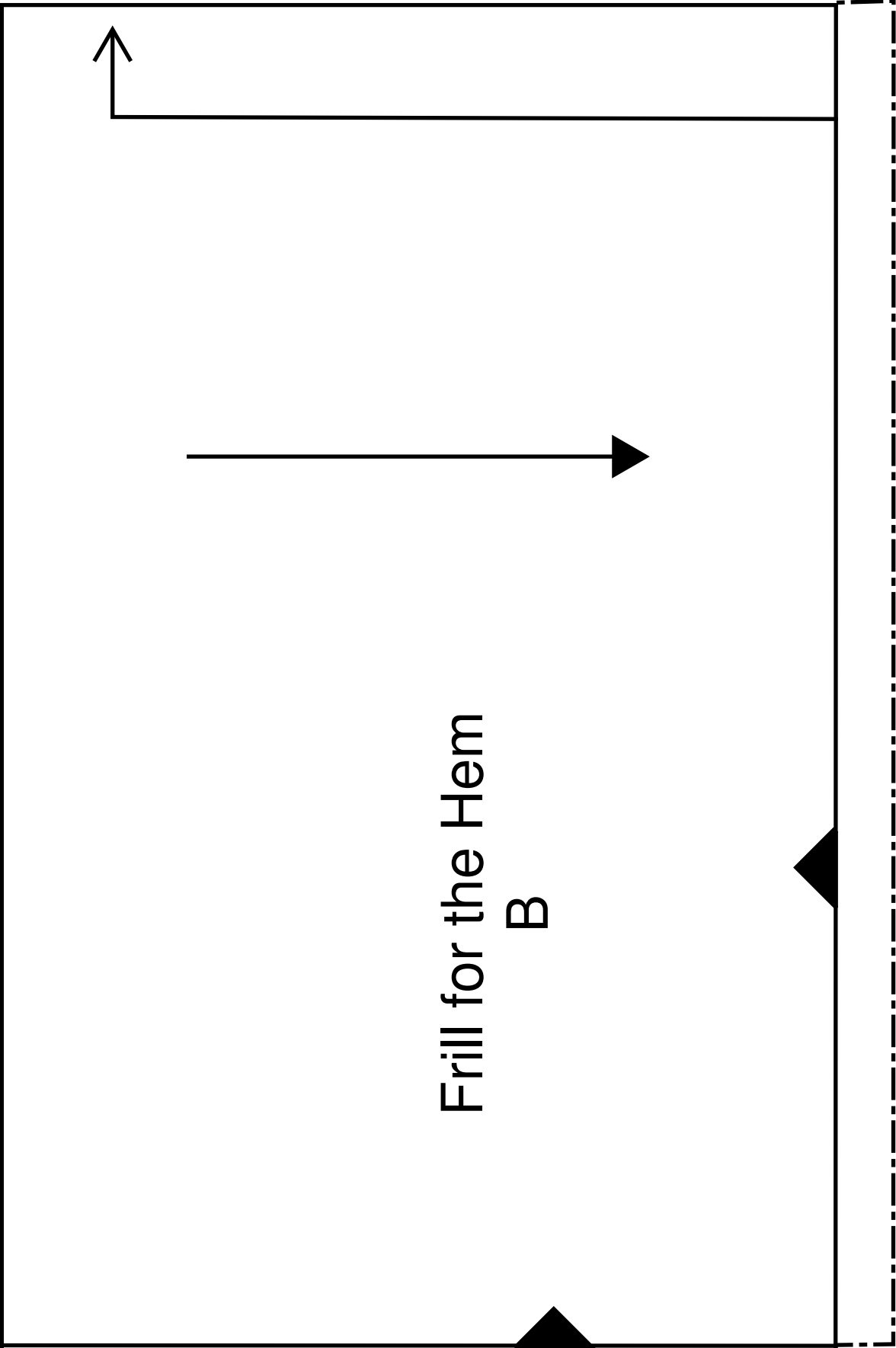
Rectangle measures:

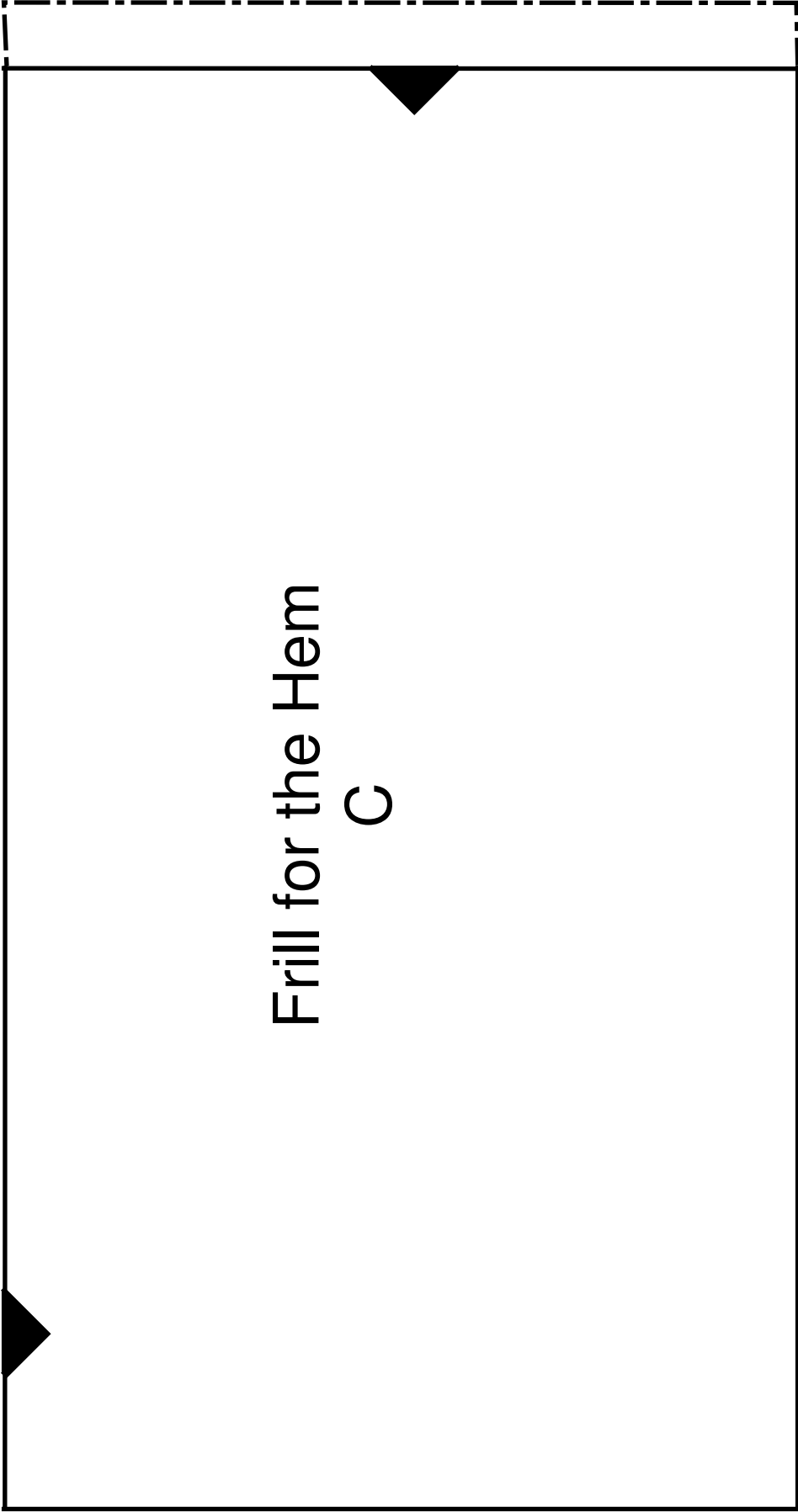
Width 85 cm

(for denser ruffle add an additional 30 cm to the width)

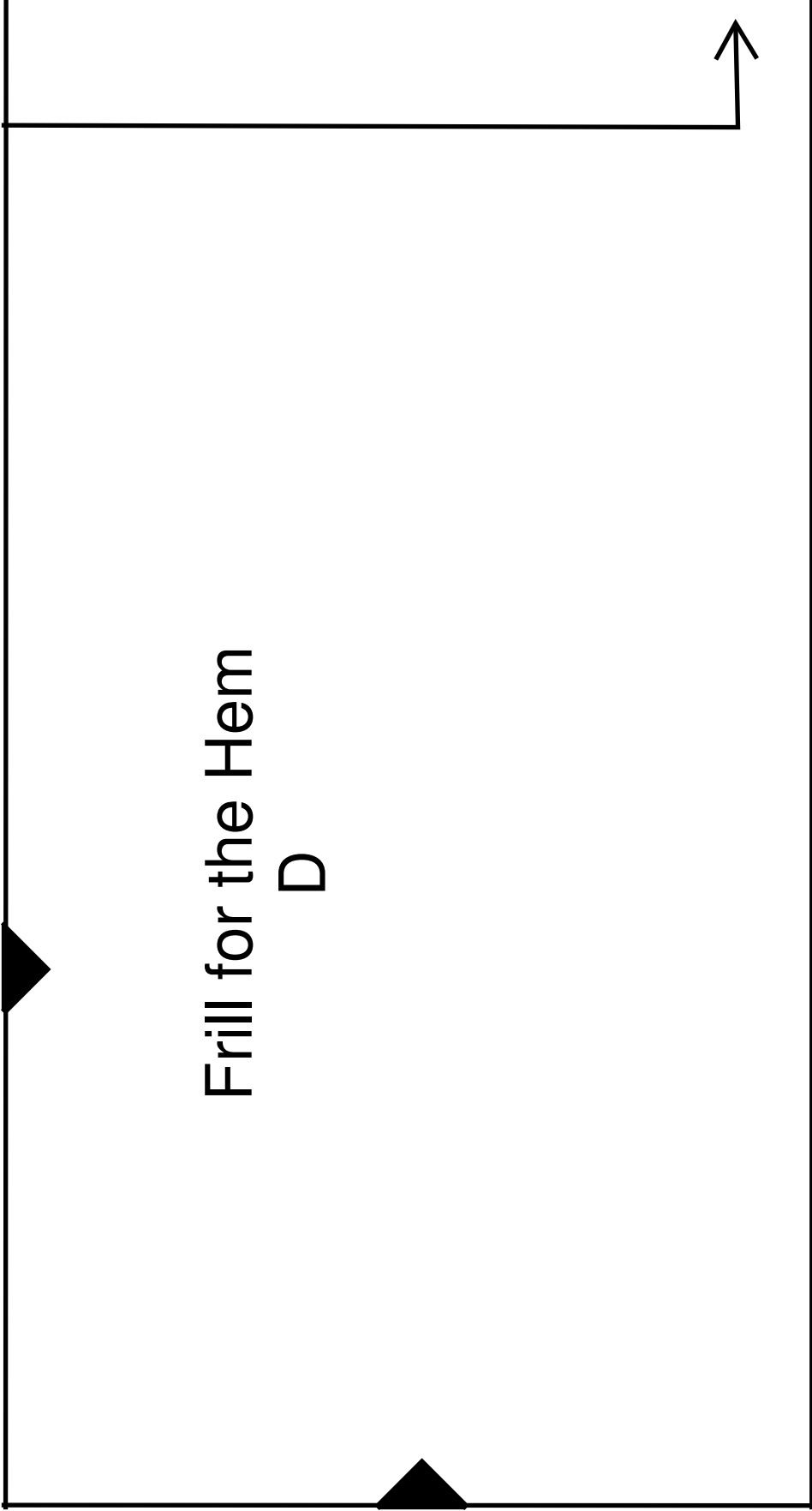
Height 27 cm







Frill for the Hem  
C



Frill for the Hem  
D

# Assembly Plan

