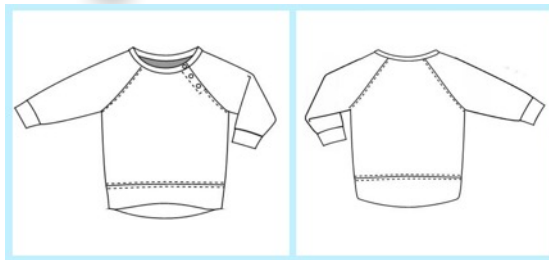


Frocks & Frolics

Sew & View Online Classes

Jelly Bean Sweater



Welcome to the wonderful world of sewing! Make the Jelly Bean Sweater with a little help from Frocks & Frolics. Watch the detailed video covering all aspects of sewing and preparation. Then use the comprehensive guide to work at your pace and learn a few tricks of the trade as well.

Marina is a professional tailor with 25 years experience in both teaching and working in the fashion industry. She continues to provide educational resources for everyone wanting to learn professional tailoring techniques. Her patterns are available through frocksandfrolics.com whilst the academy.frocksandfrolics.com provides the online resources and sewing courses to match.



Content	1
How to print the Pattern	2
Fabric Recommendations	3
Measurement Chart	4
Fabric Requirements / Notions	5
Layplan	5
About the Pattern	6
Assembly: The Snap Closure and Raglan Sleeves	7
Assembly: The Neckband	8
Assembly: How to insert KamSnaps	9
Assembly: Side Seam	10
Assembly: Hem Trim and Wrist Cuff	10/11
Assembly: Ankle Cuffs	11
Facebook Group	12
Impressum	13



The Frocks & Frolics System – Printing your Pattern

Welcome to my little world! I loved PDF patterns from the start, they are instant and you have access to designers you wouldn't normally even know about. The only snag is the massive waste of paper.

For some years I was the dressmaking tutor for Worcestershire and taught ladies far and wide how to sew. Multi size patterns didn't really work in a group setting. So, I came up with the idea of having one file per size. I could just hand them out to my students in the size they needed. I put the kettle on, while they cut out their patterns. Then we chatted as we assembled the patterns, in even the smallest of spaces. Soon they were super fast at putting them together and didn't want any other style of pattern anymore. No kneeling on the floor trying to find your size in a sea of lines, little paper waste, it was just the ticket.

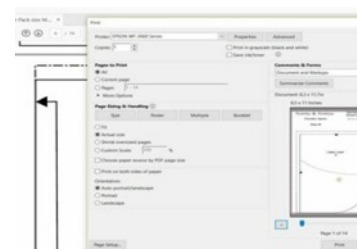
The PDF pattern is available in US letter size and DIN A4 size. If you live in the US you need the letter size paper format which is wider and shorter than the more commonly used DIN A4 metric paper, which is used across the rest of the world.



Printing

Choose the format you are going to print, either letter size or DIN A4.

Ensure you print from your laptop or PC using [Acrobat Reader DC](#) as this ensures it will print correctly. Pre-installed programs often reduce the size by a small amount, which makes a big difference to the pattern. Adobe has an option: 'shrink to fit'. Please disable it as it will also shrink the pattern.



Print at 100% or actual size. Print the first page with the test scale and check the measurement. There are two scales, one which measures 1 inch for customers working in Imperial and one measuring 5 cm for my customers working with the Metric system. If the measurement is correct, print off the rest of the pattern.



Pattern Assembly

The patterns can be cut out as they are, no sizing needed, then they are put together according to their little flower marker. A pink flower for the back, a white flower for the front. They are put together in alphabetical order and clearly labelled as A, B, C etc. Each size has its own assembly plan, so you can see at a glance which bits go together.

For all my patterns a seam allowance of 1 cm (3/8 of an inch) is included in the pattern.



Fabric Suggestions

The Sweater can be made in two way stretch knit fabric and other stretch wovens. Always look for a high cotton fibre content. The second fibre in your knit fabric should be Elastane or Lycra. Look for 3-5% and you will have a durable and comfortable piece of clothing. The exception to this rule is Interlock knit fabric in 100% cotton. Interlock is a knit fabric which looks the same from both sides. It feels slightly thicker than your average knit fabric because two layers of knit are knitted together. Interlock can retain its shape very well, without the added Lycra.



These are direct links to FabricWorm in California. I purchase most of my organic fabrics (Birch) there. They are not affiliate links.

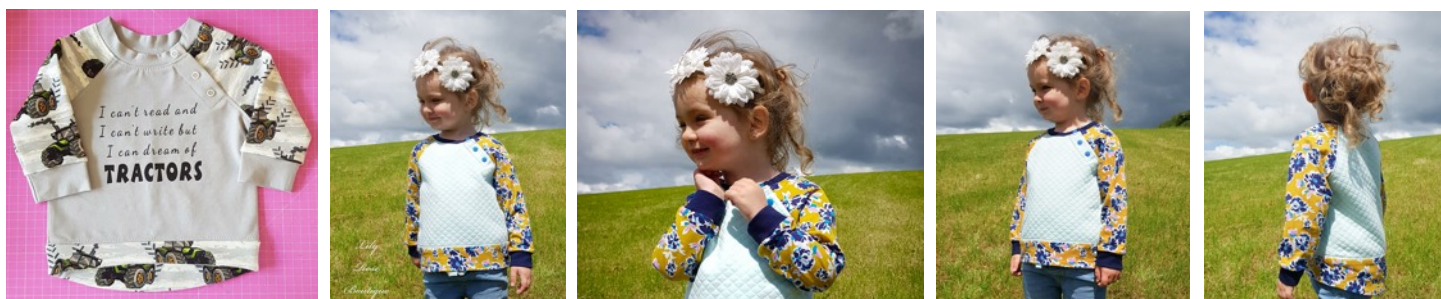


Spotlight

Our testers were as ever wonderful and I want to show you a few examples which may inspire your fabric choices. This example is by Lillian (@lillifix1 and www.lillifix.com). She managed to make the shorts matching without creating a pyjamas look by splitting the leg pattern and adding a panel in the main fabric. This works very well I think! The 'Bubble Gum' joggers are also available in our shop. She loves Stoff & Stil you can get this fabric all over Europe. Just follow the link and see if they cover your country.



Emily loves a romantic look and by combining different sweatshirt fabric types achieved a girlie look. She got her fabrics from a site in the UK called Fabric Bazar. It's a quilted jersey for the body, printed jersey for the sleeves and Interlock for the cuffs and neckline. She also used a Cricut for the letters on the tractor sweatshirt. It's a wonderful way to create a very special little sweatshirt. You can see more of her work here.

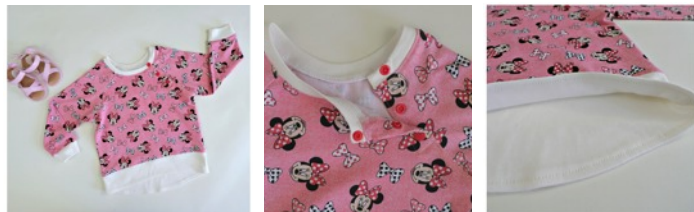


Julie made quite a few and she loves a little Facebookshop called '[BBLB OASIS](#)'. When Krisztina finds some unique fabric or has some left over she sells it on her page. She also has a little shop online where she sells her makes.



In absence of nice printed fabrics, I chose a plain red sweat fabric for this one and added an iron on embellishment. This can also make an interesting t-shirt.

Here I used a Disney print from [JoAnnes](#) Fabric Store. The cuffs and the neckline were again sewn in Interlock.



Size Chart

This pattern is for babies and toddlers from size newborn to age 2-3. Decide which size you need predominately based on height. The chart gives you the body measurement and the finished garment measurement (FGM). This is useful as there is much more ease in the larger sizes.

Age	Height (Size)	Chest	FGM Chest	Arm Length	Sleeve Length
Newborn	50 cm 19,7"	39 cm 15,3"	46 cm 18,1"	17.5 cm 6,9"	22 cm 8,7"
Newborn	56 cm 22"	41 cm 16,1"	49 cm 19,3"	19.2 cm 7,6"	24 cm 9,4"
0-3 Months	62 cm 24,4"	43 cm 16,9"	51 cm 20"	22 cm 8,7"	26 cm 10,2"
3-6 Months	68 cm 26,8"	45 cm 17,7"	54. cm 21,4"	25 cm 9,8"	30 cm 11,8"
6-9 Months	74 cm 29,1"	47 cm 18,5"	57.4 cm 22,6"	26,5 cm 10,4"	32 cm 12,6"
9- 12 Months	80 cm 31,5"	50 cm 19,7"	60.4 cm 23,8"	27,5 cm 10,8"	33 cm 13"
12-18 Months	86 cm 33,9"	52 cm 20,3"	63 cm 24,8"	30 cm 11,8"	35 cm 13,8"
18-24 Months	92 cm 36,2"	54 cm 21,2"	66 cm 26"	32 cm 12,6"	37 cm 14,6"
2-3 Years	98 cm 38,6"	58 cm 22,83"	68 cm 26,8"	34 cm 13,3"	40 cm 15,7"

Fabric Requirements & Layout Plans



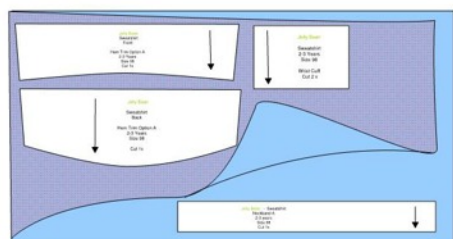
The measurements below are based on a fabric width of 140 cm (55 inches). I would recommend using a serger to finish off the seams. Use a 'Super Stretch' needle for all your sewing.

Notions	
Matching Thread / Serging Thread	1 Reel / 4 Reels (depending on type of Serger)
Kam Snaps or similar	3 Sets

Layout Plan

Fold over your fabric from one side, just enough to place the back on the fold.

Cut the cuffs, neckband and hem trim from ribbing or interlock with added Lycra or Spandex. (The hem trim can be done in literally any fabric, as it requires no stretch. So you can experiment here!)



Fabric Requirements

140 cm / 55 inches	50	56	62	68	74	80	86	92	98
	Newborn	Newborn	0-3 Months	3-6 Months	6-9 Months	9-12 Months	12-18 Months	18-24 Months	2-3 Years
Body Sweater	35 cm 14"	40 cm 16"	45 cm 18"	50 cm 20"	55 cm 22"	60 cm 24"	65 cm 26"	70 cm 28"	70 cm 28"
Neckband, Wrist Cuffs and Hem Trim	30 cm / 12"								

The Pattern in Detail - Seam allowance is always 1 cm

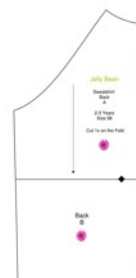
The Front



Cut the front, ensuring that the fabric has the right side facing up. For the sweater without the snap closure, cut the front piece along the center front line and cut the piece on the fold.

Cut 1 x

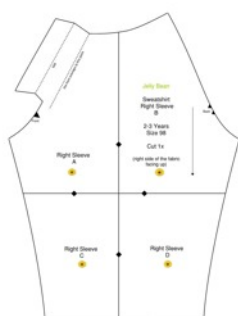
The Back



The back is cut on the fold.

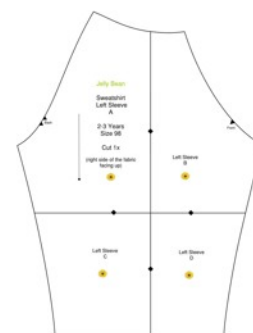
Cut 1 x on the fold

The Sleeves



The sleeves are cut as two separate pieces. Cut the sleeves, ensuring that the fabric has the right side facing up. If you are not inserting the snap closure cut the left sleeve twice (a pair).

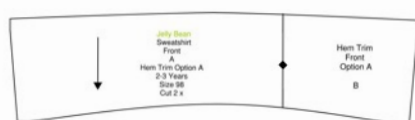
Cut 1 x each side



The Hem Trim

The hem trim has two options. You can create a basic hem trim or the wider hem trim, with a slightly longer back. You should cut one or the other, not both!

Option A



Option B



The Neckband

The neckband can be cut in ribbing or interlock. You can work with the button closure or without. If you are NOT inserting the closure, please cut the neckband shorter as indicated on the pattern

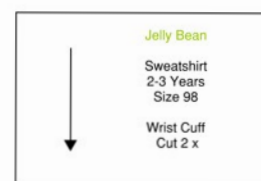
Cut 1 x



The Wrist Cuffs

The wrist cuffs can be cut in ribbing or interlock with Lycra, Elastane or Spandex (3-5%).

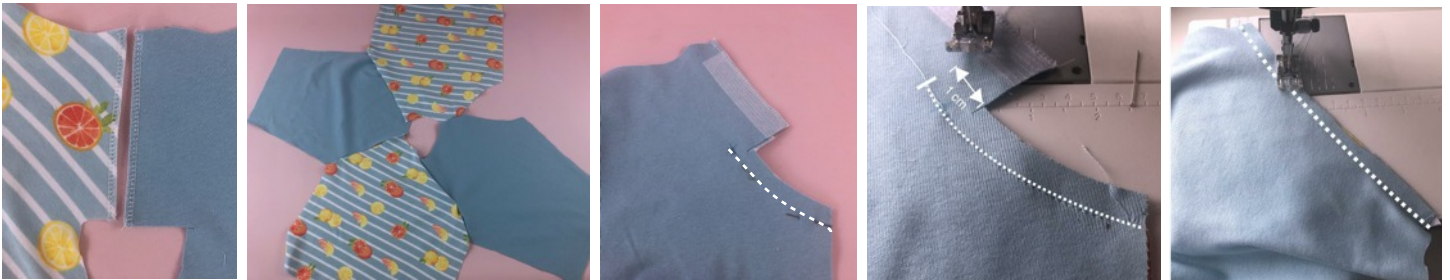
Cut 2 x



Inserting the Sleeves and the Snap Closure



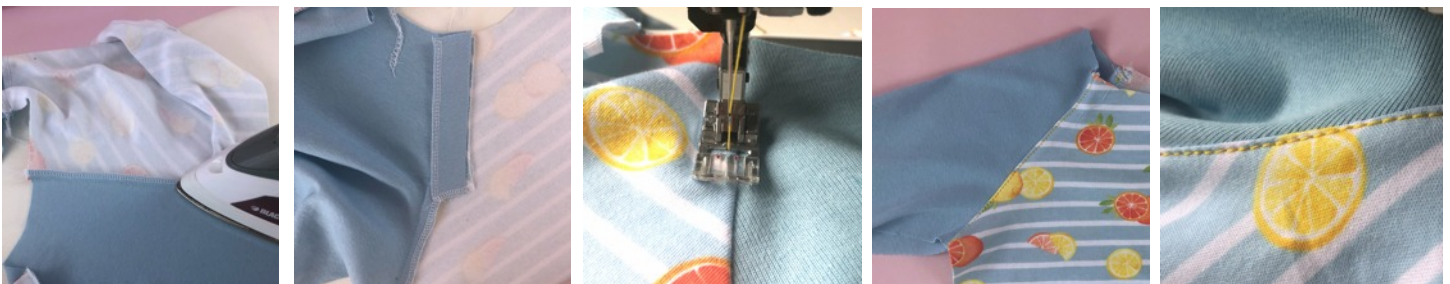
The first step is to prepare the closure by ironing a strip of interfacing to the edge of the fabric on both the sleeve and front pieces.



Serge the edge. Insert the sleeves into the front and back. Place the pieces in front of you as they should be inserted. Then pin each seam. Where the snap closure is to be inserted, the seam is only partially closed. Stop 1 cm up from the point, where the placket begins.



Now we are going to serge the armhole seam. Cut a little off as you go, so the seam is a little slimmer. Where the closure is inserted, fold over the sleeve placket, so that the serging of the front is completely visible. Serge the placket and armhole.

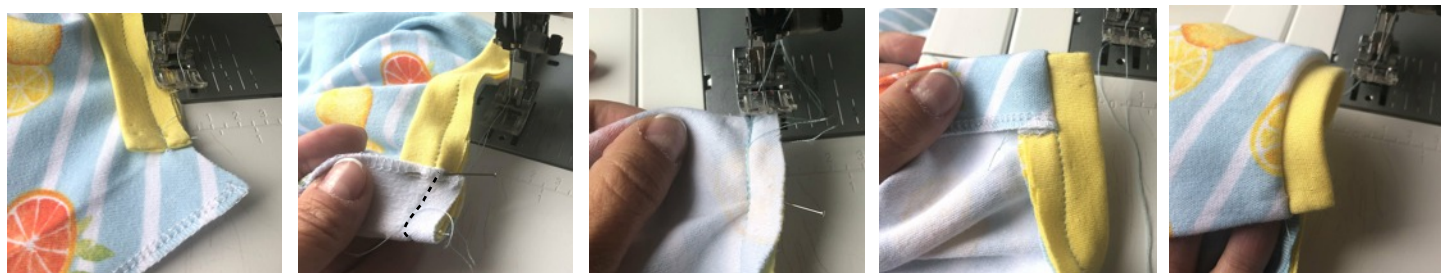


Iron the seam into the front. Topstitch the seams. Leave the seam where the placket is inserted. We will do that later.

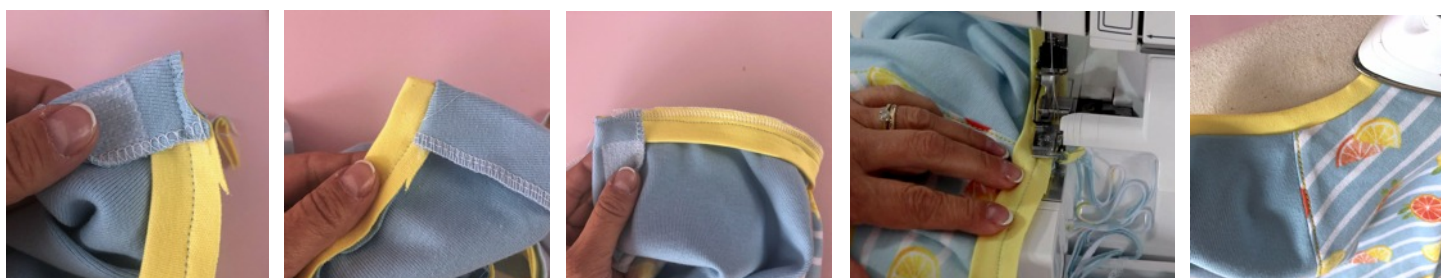
Inserting the Neckband



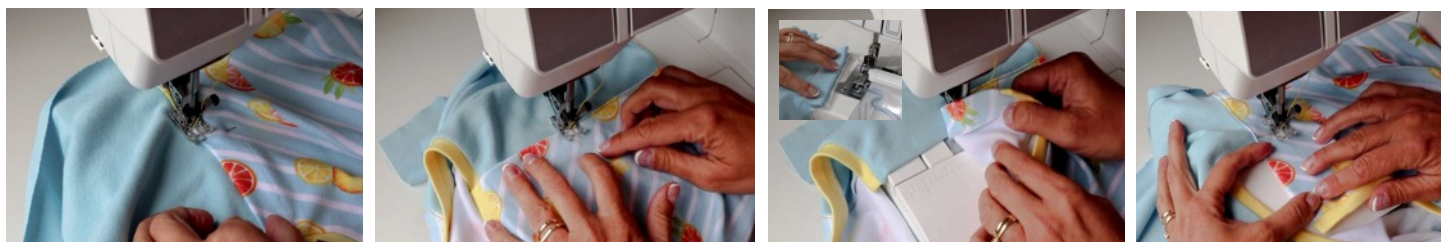
Close the neckband ends and turn. Iron the neckband lengthways in half and pin it into the neckline. Start the neckband where the placket starts.



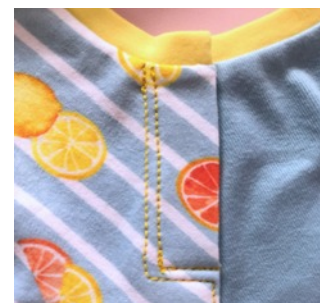
With the neckband inserted, fold the placket over the neckband. Turn over and sewing on the existing stitch line secure the placket. This will give you a beautiful finish.



We need to cut back the seam allowance, so it doesn't get in the way of the KamSnaps we are going to insert. Serge the neckline. Iron the seam into the front. You can topstitch this neckline if you like too.



Now we can topstitch the placket. Start at the under arm. Sew up until you are about 1 cm into the placket. Make sure the needle is down when you turn the fabric and sew at a 90° angle to the edge of the placket. Remember, we had the width of the serging still visible? We did this, so we can now sew back up without closing the placket accidentally. I moved the sleeve placket out of the way, just to be sure.



How to insert KamSnaps

There are many snap tools out there, I like to use Kam snaps.

They also come in different shapes, sizes and materials. From metal to plastic, you are sure to find something special at kamsnap.com. A complete plastic snap set has 4 components:

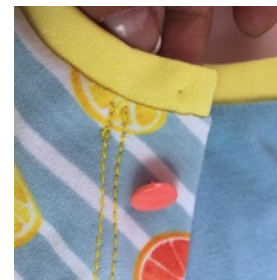
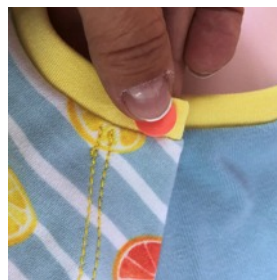
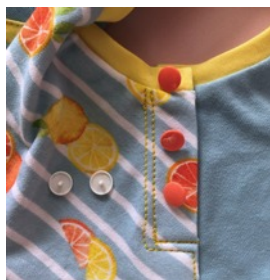
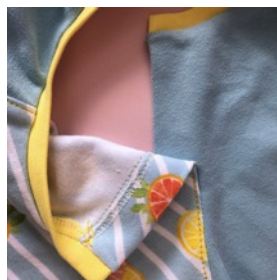
2 caps

1 stud (also called male)

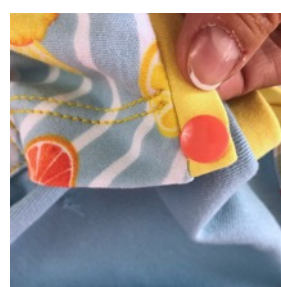
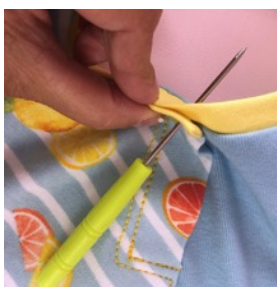
1 socket (also called female)



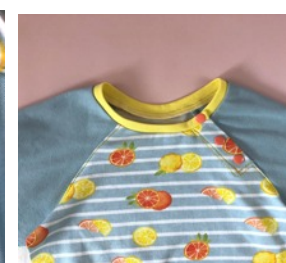
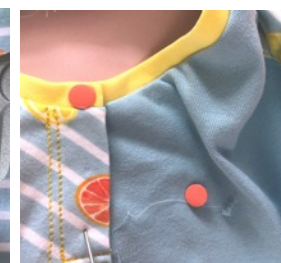
Each cap is adhered to a stud/male or socket/female. The socket and stud are what snap into each other, while the cap is what holds the socket and stud in your fabric.



Place the snaps where you would like them and mark that spot with a pencil or textile marker. Alternatively, press hard, so the snap leaves an indent.



Using the awl, push through all layers so the snaps will all line up. Remove the lower layer from the awl, place the cap snap under the placket and push the prong through to the top. Place the socket on top of the prong. Place the snaps between the top and bottom dies of the pliers. Press down and release. You will see the prong has been flattened and now holds the snap in place. Now we attach the stud (slim rim). Lift out the awl completely and push the cap snap with the prong through.



Place the stud on top. Press together and release. Close the snaps and repeat the steps until all three are attached.

Closing the Side Seam



Place the front and back pieces on top of each other with the right fabric sides facing each other. Pin and close the side seam. Serge the seam. Iron the seam towards the back.

Inserting the Hem Trim



Place the short ends of the trim pieces and the wrist cuffs with the right sides facing each other together. Pin and sew. Iron the seams apart. Let's start with the trim. With right sides facing, place one trim inside the other. Sew together along the lower edge of the hem.



Iron seams apart. Then iron the edge. You could also topstitch the edge. Slide the trim with the right sides facing over the sweater and pin just one edge together. Sew and iron the seam apart. Serge the other edge. (Alternatively serge the trim in one to the sweater and topstitch)

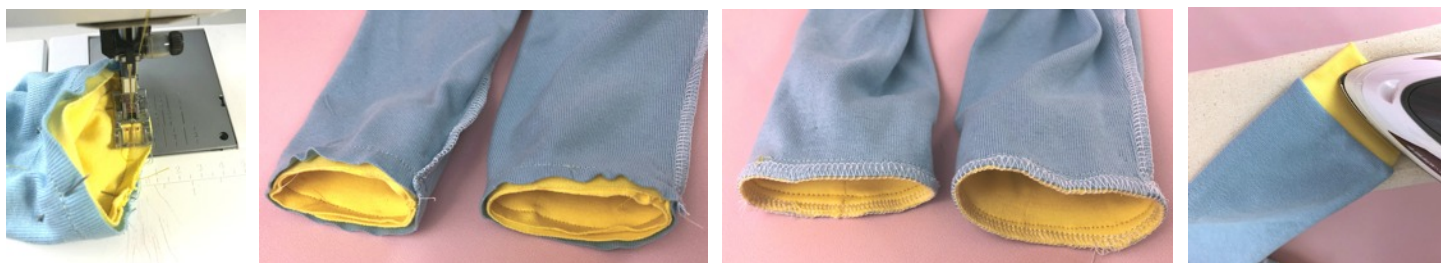


Cut back the seam allowance of the sweater. Turn up the inner side of the trim and pin, using vertical pins. Topstitch on either side of the seam. Use a long stitch length.

Attaching the Cuffs



Now we are ready to insert the cuffs. Iron the cuff lengthways in half and turn the sweater inside out. Place the cuff inside the sleeve and pin.



Sew from the inside of the cuff. Stretch as you go along. Serge the edge. It will be a little stretched. Steam in the edge, turn the sleeve and then iron again.

Well done!



Don't forget, you can also sew the joggers in this 'Baby Collection'. Lillian combined similar fabrics but only the trim and the contrast are exactly the same. It is a great rule to go by, to avoid the pyjama look.

Notice how the sleeves and the main fabric of the joggers is a different colour, matching but none the less different.

I used Doodles Jersey from JoAnne's fabric stores for Victoria outfit. Notice how I didn't pull off the 'non' pyjama look? So, I suppose I will make sure next time that I choose a different sleeve colour. Still Victoria loves her outfit and there is plenty of room to grow.



Our Facebook Group [Join us](#) and have some fun sewing and chatting

If at any point while sewing this pattern you run into trouble and need helpful tips, find the 'Frocks & Frolics Sewing Circle' on Facebook.

I have got to know so many of you through the group and it's making the job of creating patterns such an enjoyable task. Your comments telling me you appreciate the detail and work that goes into making a pattern, which fits super and looks great too, is what keeps me going! But remember if you run into problems and tell me about it, I can make my patterns even better! So thank you for all your support.

I can't wait to see more of your ideas. When you post on Instagram please #frocksandfrolics #frocksandfrolicssweatshirt, #joggers, #sweatshirt, #babyromper #sewingproject and @frocksandfrolics.

THANK YOU!

Just a few of the beautiful Jelly Bean Sweaters we made during testing!



Impressum

Producer:	Frocks & Frolics
Photography:	Ela Berbic Brown
Model:	Victoria Brown
Tester Squad:	Julie Wilcox, Eileen McCullum, Trudi Babich, Lillian Bigton Nygård, Eileen McCallum, Jessie Schrag, Emily Jay
Editing:	Marina Brumpton
Contact:	frocksandfrolicsflowergirls@gmail.com
Address:	S. Genessee Ave Los Angeles USA
Website:	frocksandfrolics.com
Facebook:	https://www.facebook.com/Frocks-Frolics-156118561138703/
Frocks and Frolics Sewing Circle:	https://www.facebook.com/groups/733648706761805/
Instagram:	https://www.instagram.com/frocksandfrolics/
Academy:	https://www.academy/frocksandfrolics/

The logo for Frocks & Frolics features the brand name in a playful, hand-drawn font. Each letter is a different color: 'F' (red), 'r' (yellow), 'o' (blue), 'c' (green), 'k' (orange), 's' (purple), '&' (purple), 'F' (blue), 'r' (red), 'o' (yellow), 'l' (green), 'i' (orange), 'c' (purple), and 's' (blue). The letters have a slightly distressed, chalk-like texture.